

Westhill (Highland), Highland

Population 5,265

Westhill is in Highland. It has grown as a commuter town for an expanding Inverness. It is a residential settlement with new estates including executive homes.

This type of medium-sized town is a suburban or commuter locality with a prevalence of higher income and private housing. A large proportion of the population are over 45, and many are retired. Many people own their home. There is also a high proportion of people in professional employment and a high proportion of residents are educated to HNC level or above. Many residents own two or more cars.

Westhill (Highland) is an interdependent to dependent town.

Its most similar towns are [Brightons](#), [Bishopton](#), [New Scone](#), and [Kilbarchan](#).

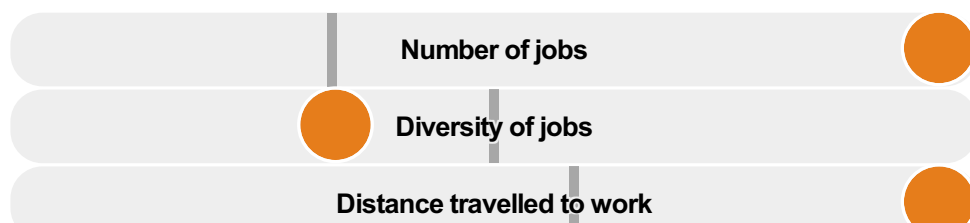
To gain more insight into Westhill (Highland), compare it to any of the other towns included in USP.

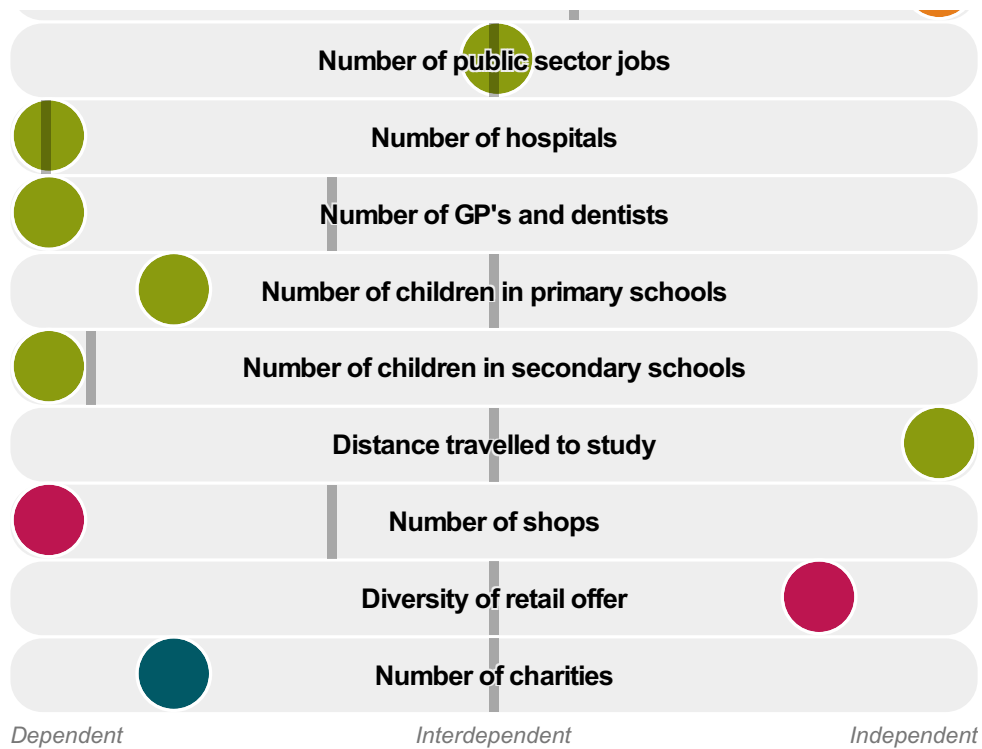
Inter-relationships

Dependent

Interdependent

Independent





Westhill (Highland) is an **interdependent to dependent** town.

Combining inter-relationships and typology, Westhill (Highland) is grouped with 16 other towns. It has similarities to these towns in terms of the number of hospitals, children in secondary schools, and public sector jobs.

It differs in terms of the number of charities, children in primary schools, jobs, and diversity of retail offer. It also differs in the distance travelled to work, and the distance travelled to study. Westhill (Highland) differs most from its group in the number of shops, and GP's and dentists.

- Employment
- Public
- Commercial
- Social
- ▬ Average for the category

Change

Population change 2001 to 2011

64%

More than similar towns per head of population

Population

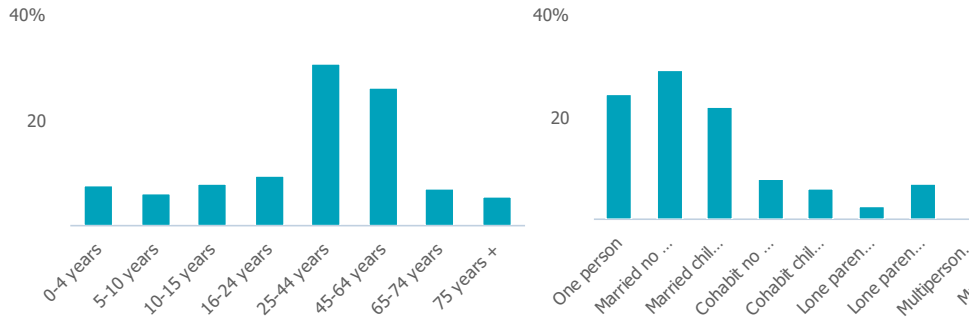
Population 2011

5K

Less than similar towns

Age

Household composition



Employment

Jobs

6k

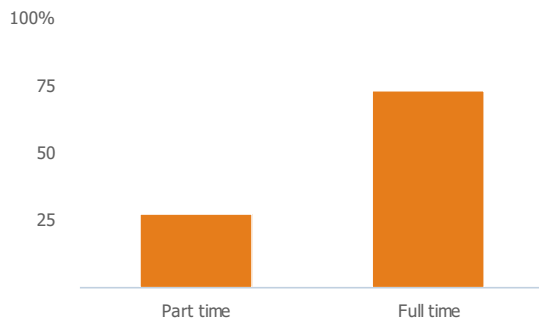
More than similar towns per head of population

Jobs change 2009 to 2014

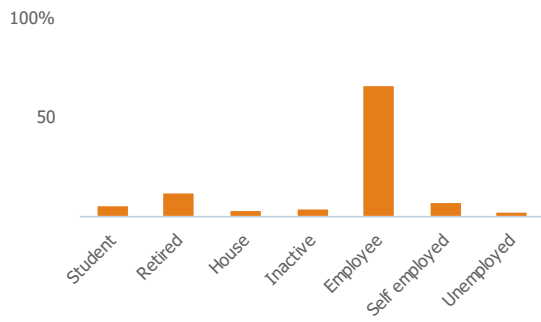
28%

More than similar towns per head of population

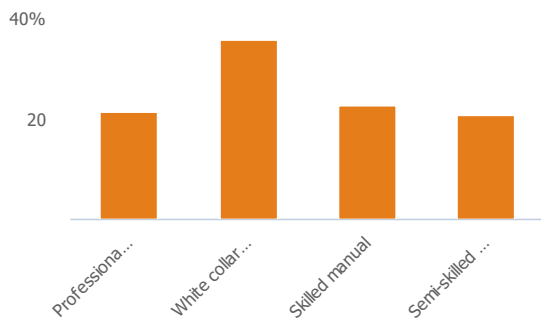
Employment type(% working full time vs part time aged 16-74)



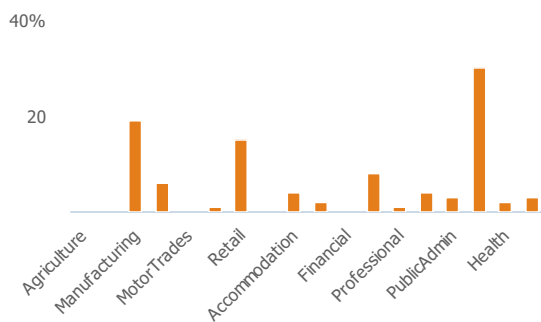
Occupation (% aged 16-74)



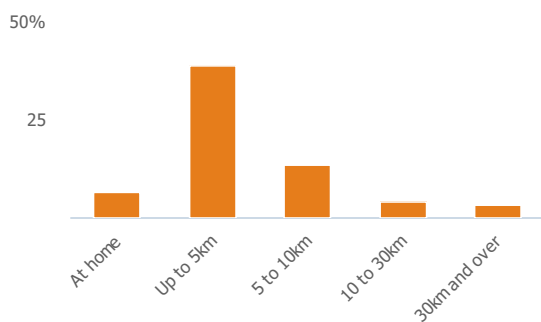
Social Grade (% households aged 16-64)



Sector Diversity

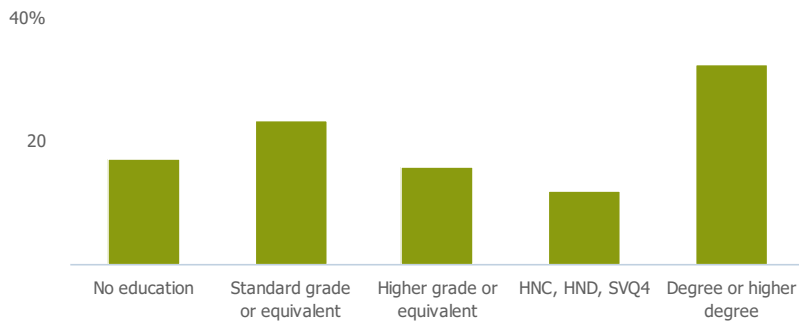


Distance travelled to work



Public

Education (% all people aged 16 and over)



Children in primary schools

338

Less than similar towns per head of population

Commuter Flow Map

Coloured and grey lines/pins show the main and smaller commuter flows, respectively, between this town and the other towns in Scotland.

Commercial

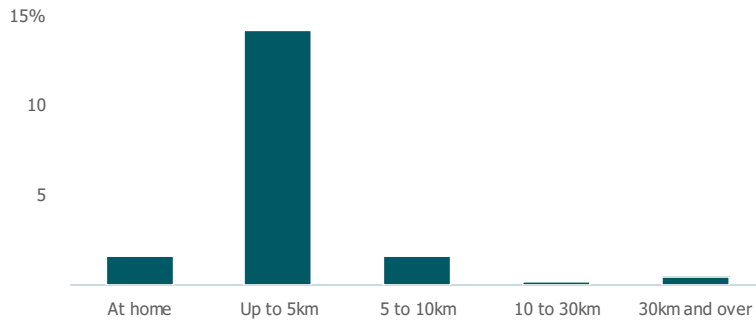
Number of people per shop

2k

Less than similar towns per head of population

Social

Distance travelled to study



Number of residents per charity

1k

More than similar towns per head of population

Connectivity and environment assets

Average download speed (MBs)

20

Less than similar towns per head of population

Download

Download all of the Westhill (Highland) data in PDF format.

[Download PDF \(https://usppreview.blob.core.windows.net/pdfs/Westhill%20\(Highland\).pdf\)](https://usppreview.blob.core.windows.net/pdfs/Westhill%20(Highland).pdf)