

Uddingston, South Lanarkshire

Population 5,539

Uddingston is in South Lanarkshire. A mining town the pits closed in the 1930s. Since then other industries have been established. These reflect the location of the town on the main route north to Glasgow which was also historically important to the town. Logistics companies, removal companies and transport companies operate from Uddingston. There is also a range of other food industries including Tunnocks and some engineering manufacturers.

This type of medium-sized town is a suburban or commuter locality with a prevalence of higher income and private housing. A large proportion of the population are over 45, and many are retired. Many people own their home. There is also a high proportion of people in professional employment and a high proportion of residents are educated to HNC level or above. Many residents own two or more cars.

Uddingston is an interdependent to independent town.

Its most similar towns are [Oldmeldrum](#), [Kilmacolm](#), [Kinross](#), and [Strathaven](#).

To gain more insight into Uddingston, compare it to any of the other towns included in USP.

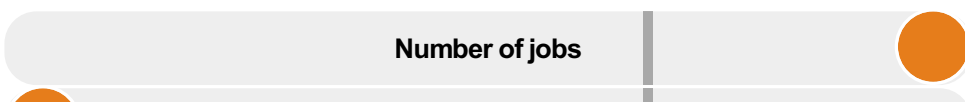
Inter-relationships

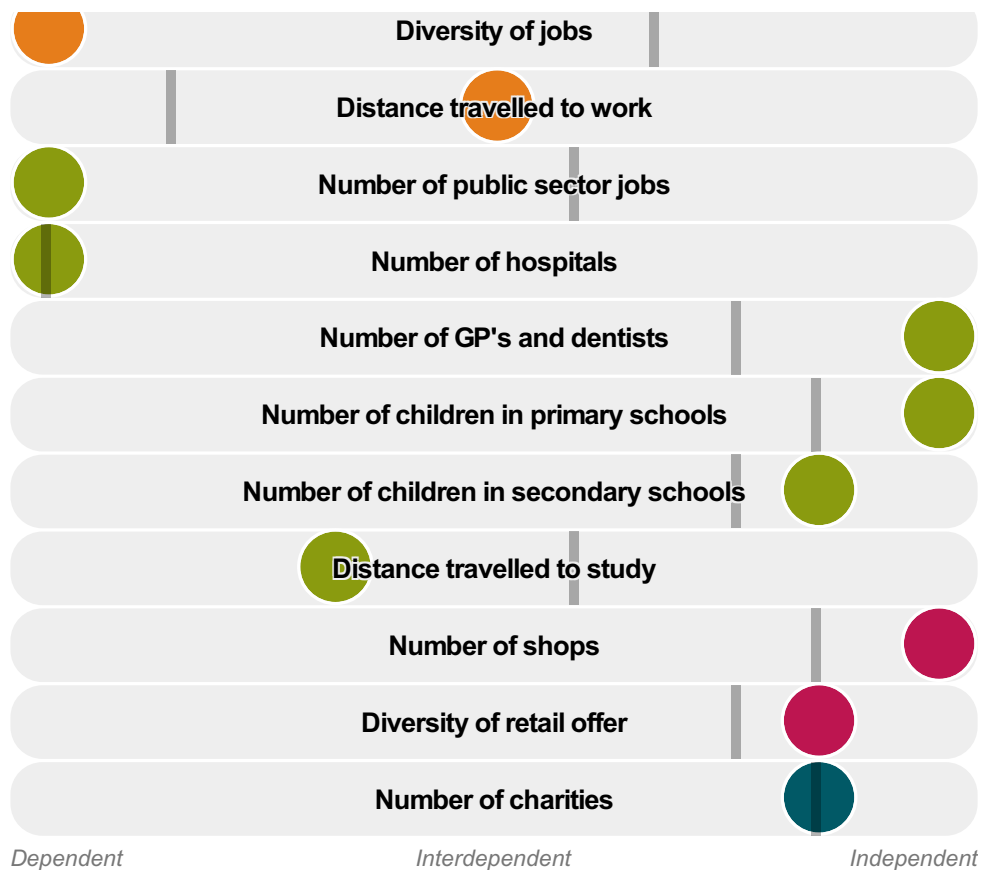
Dependent

Interdependent

Independent

Number of jobs





Uddingston is an **interdependent to independent** town.

Combining inter-relationships and typology, Uddingston is grouped with 4 other towns. It has similarities to these towns in terms of the number of charities, hospitals, children in secondary schools, and diversity of retail offer.

It differs in terms of the number of jobs. It also differs in the distance travelled to work. Uddingston differs most from its group in the number of public sector jobs; and the diversity of jobs.

- Employment
- Public
- Commercial
- Social
- Average for the category

Change

Population change 2001 to 2011

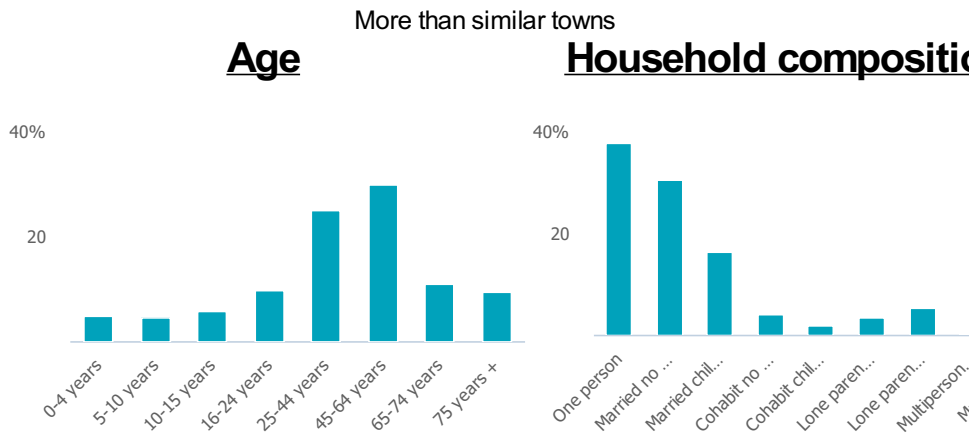
-1%

Less than similar towns per head of population

Population

Population 2011

6k



Employment

Jobs

7k

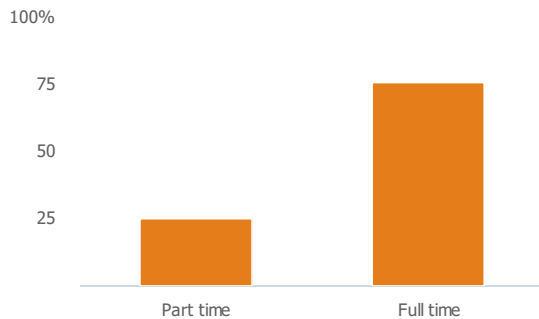
More than similar towns per head of population

Jobs change 2009 to 2014

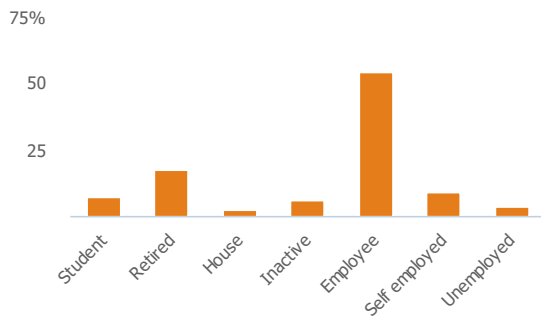
16%

More than similar towns per head of population

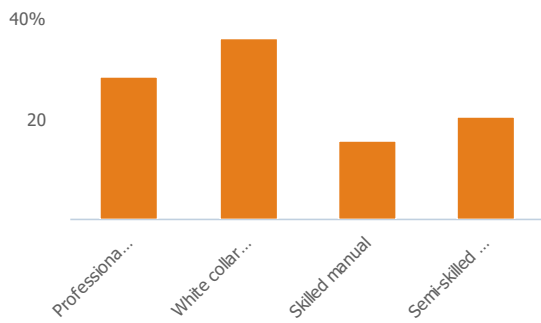
Employment type(% working full time vs part time aged 16-74)



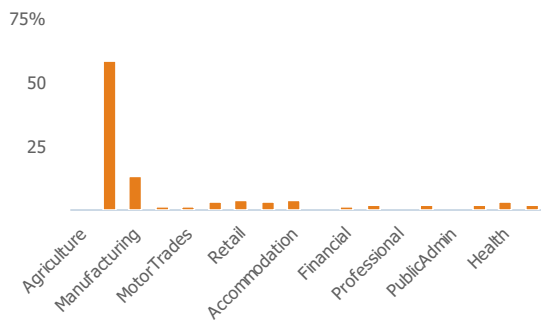
Occupation (% aged 16-74)



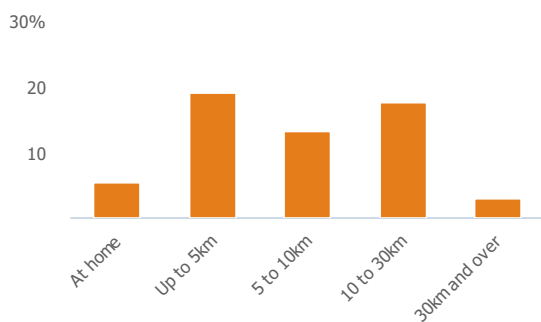
Social Grade (% households aged 16-64)



Sector Diversity

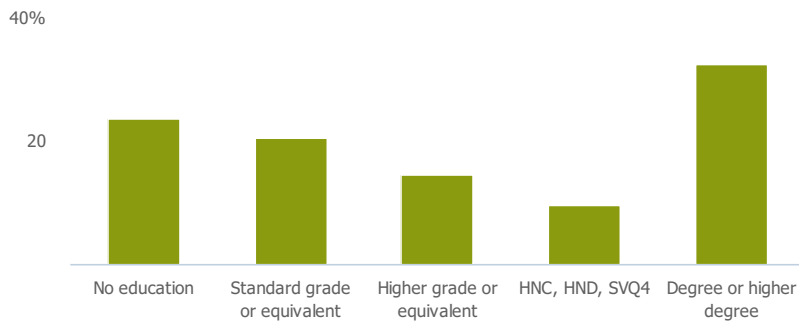


Distance travelled to work



Public

Education (% all people aged 16 and over)



Children in primary schools

904

More than similar towns per head of population

Commuter Flow Map

Coloured and grey lines/pins show the main and smaller commuter flows, respectively, between this town and the other towns in Scotland.

Commercial

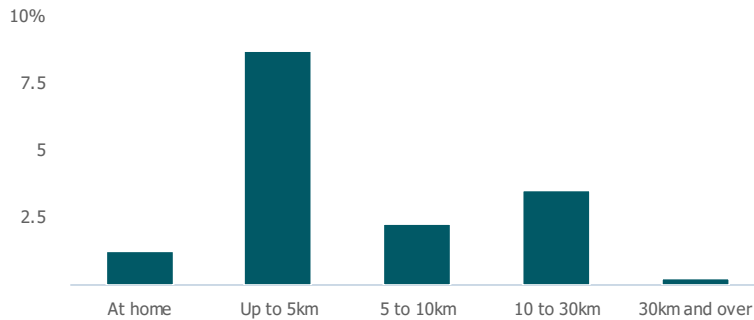
Number of people per shop

38

More than similar towns per head of population

Social

Distance travelled to study



Number of residents per charity

168

Less than similar towns per head of population

Connectivity and environment assets

Average download speed (MBs)

54

More than similar towns per head of population

Download

Download all of the Uddingston data in PDF format.

[Download PDF \(https://usppreview.blob.core.windows.net/pdfs/Uddingston.pdf\)](https://usppreview.blob.core.windows.net/pdfs/Uddingston.pdf)

