

# Tranent, East Lothian

Population 11,642

Tranent in East Lothian is a town whose identity has been defined by mining. Coal was first discovered in the 13th century. Other industries such as tanning, brewing and distilling also emerged in the town. There is still a distillery. Housing was built as mining expanded. In the 20th century production slowed and the pits shut in 1961 and the opencast mine also closed. It remains a local service centre.

This type of large town is extremely mixed in terms of demographics. There is a particularly wide range of people, housing and activities. The number of older couples with no children is higher than average. There is a mix of professional and non-professional jobs, and part-time and self-employment are both important for a significant proportion of residents. Socioeconomic status is higher than in other kinds of town and there is a mix of professionals and nonprofessionals, those with higher and lower educational attainment.

Tranent is an interdependent town.

Its most similar towns are [Rosyth](#), [Barrhead](#), [Cambuslang](#), and [Musselburgh](#).

To gain more insight into Tranent, compare it to any of the other towns included in USP.

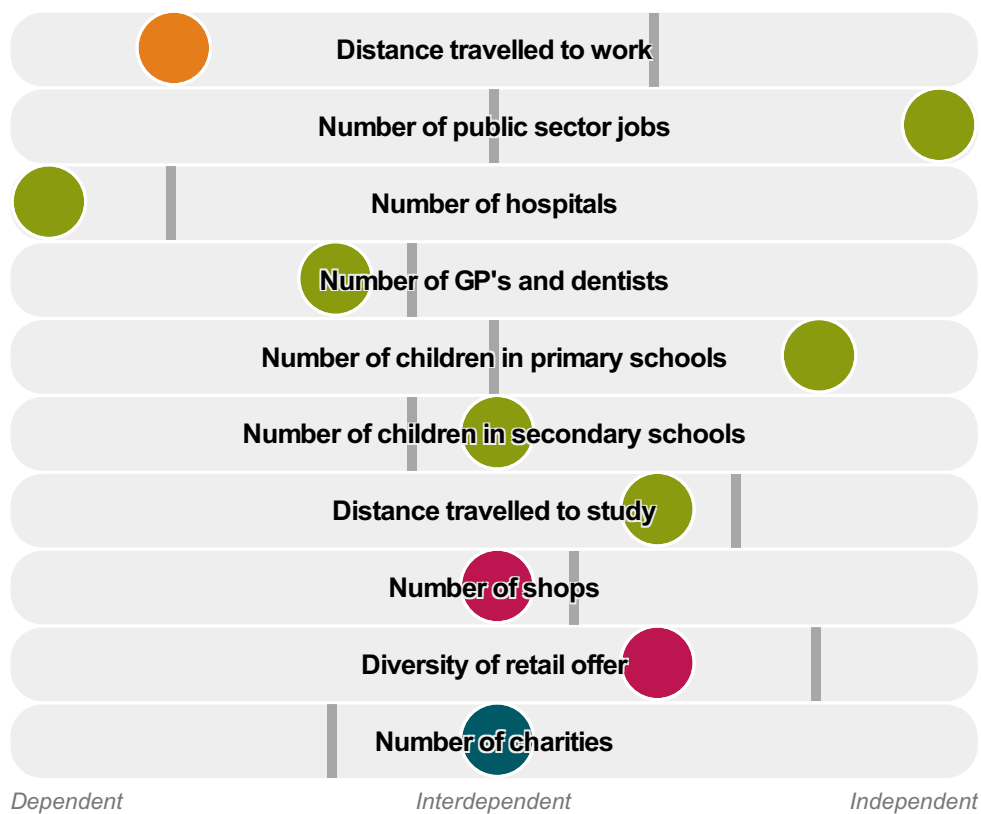
## Inter-relationships

*Dependent*

*Interdependent*

*Independent*





Tranent is an **interdependent** town.

Combining inter-relationships and typology, Tranent is grouped with 12 other towns. It has similarities to these towns in terms of the number of hospitals, children in secondary schools, shops, GP's and dentists, and diversity of retail offer. It also has similarities in the distance travelled to study.

It differs in terms of the number of children in primary schools, and public sector jobs. Tranent differs most from its group in the diversity of jobs, and the distance travelled to work.

- Employment
- Public
- Commercial
- Social
- Average for the category

## Change

### Population change 2001 to 2011

31%

More than similar towns per head of population

## Population

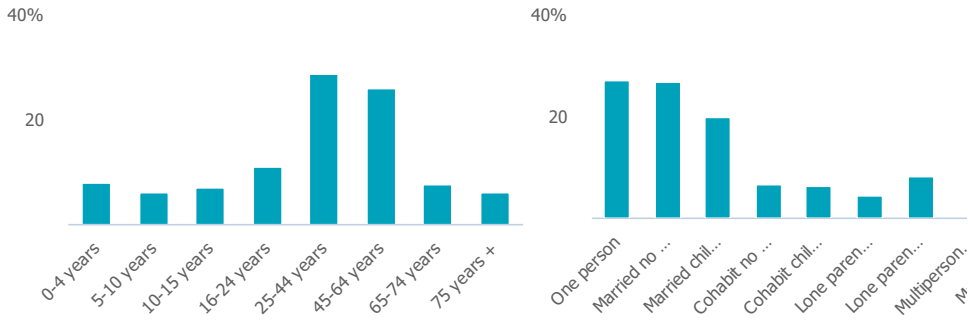
### Population 2011

12k

Less than similar towns

**Age**

**Household composition**



**Employment**

**Jobs**

2k

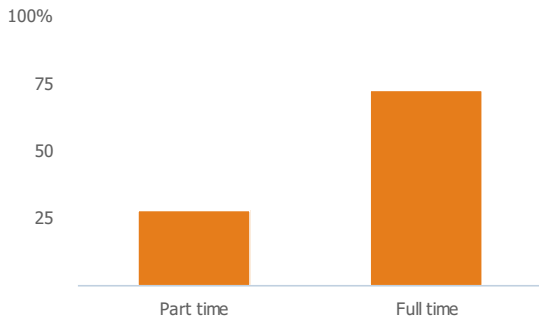
Less than similar towns per head of population

**Jobs change 2009 to 2014**

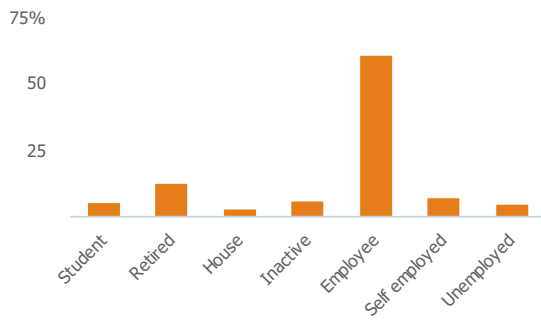
13%

More than similar towns per head of population

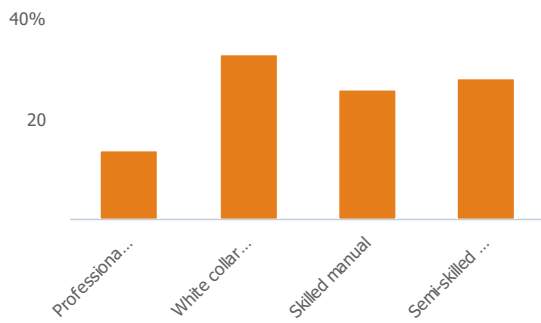
**Employment type(% working full time vs part time aged 16-74)**



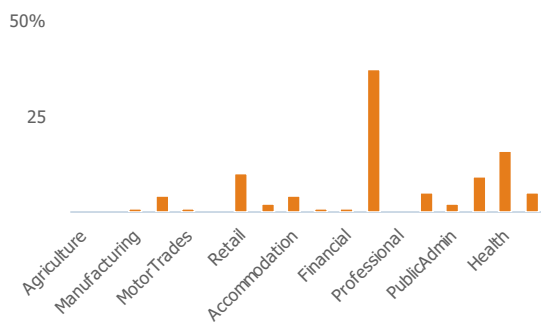
**Occupation (%aged 16-74)**



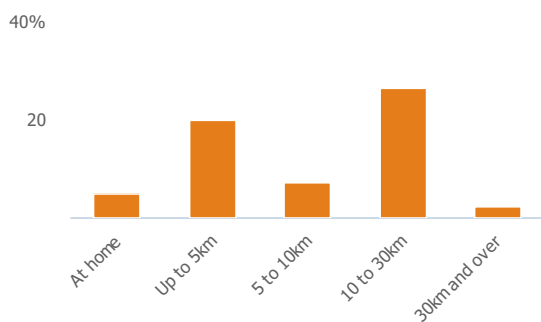
### Social Grade (% households aged 16-64)



### Sector Diversity

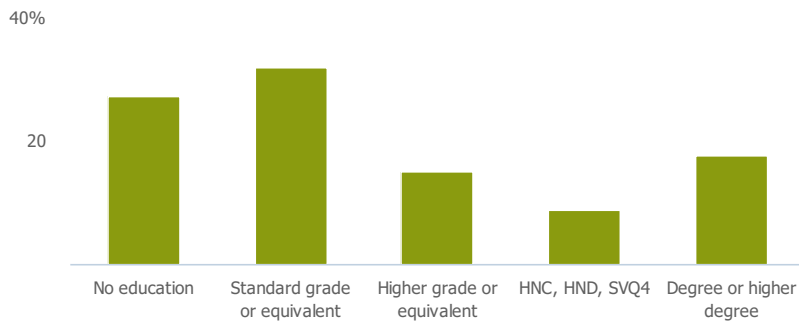


### Distance travelled to work



## Public

### Education (% all people aged 16 and over)



## Children in primary schools

1k

More than similar towns per head of population

## Commuter Flow Map

Coloured and grey lines/pins show the main and smaller commuter flows, respectively, between this town and the other towns in Scotland.

## Commercial

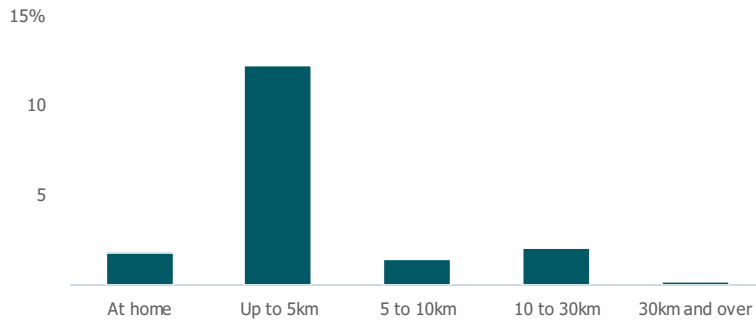
### Number of people per shop

139

Less than similar towns per head of population

## Social

### Distance travelled to study



### Number of residents per charity

306

Less than similar towns per head of population

## Connectivity and environment assets

### Average download speed (MBs)

22

Less than similar towns per head of population

## Download

Download all of the Tranent data in PDF format.

[Download PDF \(https://usppreview.blob.core.windows.net/pdfs/Tranent.pdf\)](https://usppreview.blob.core.windows.net/pdfs/Tranent.pdf)



UNIVERSITY of STIRLING

