

Thornton, Fife

Population 2,016

Thornton is located in Fife. Historically it was a coaching point. For a short time the nearby Rothes Pit (1957-1961) provided employment. There are small service businesses in the town but the proximity to Glenrothes and Kirkcaldy offer employment opportunities.

This type of small town is extremely mixed in terms of demographics. There are particularly wide ranges of people, housing and activities. The number of older couples with no children is higher than average. There is a mix of professional and non-professional jobs, and part-time and self-employment are both important for a significant proportion of residents. Socioeconomic status is higher than in other types of town and there is a mix of professionals and nonprofessionals, those with higher and lower educational attainment.

Thornton is an interdependent to dependent town.

Its most similar towns are [Newtown St Boswells](#), [Redding](#), [Auchtermuchty](#), and [Crosshouse](#).

To gain more insight into Thornton, compare it to any of the other towns included in USP.

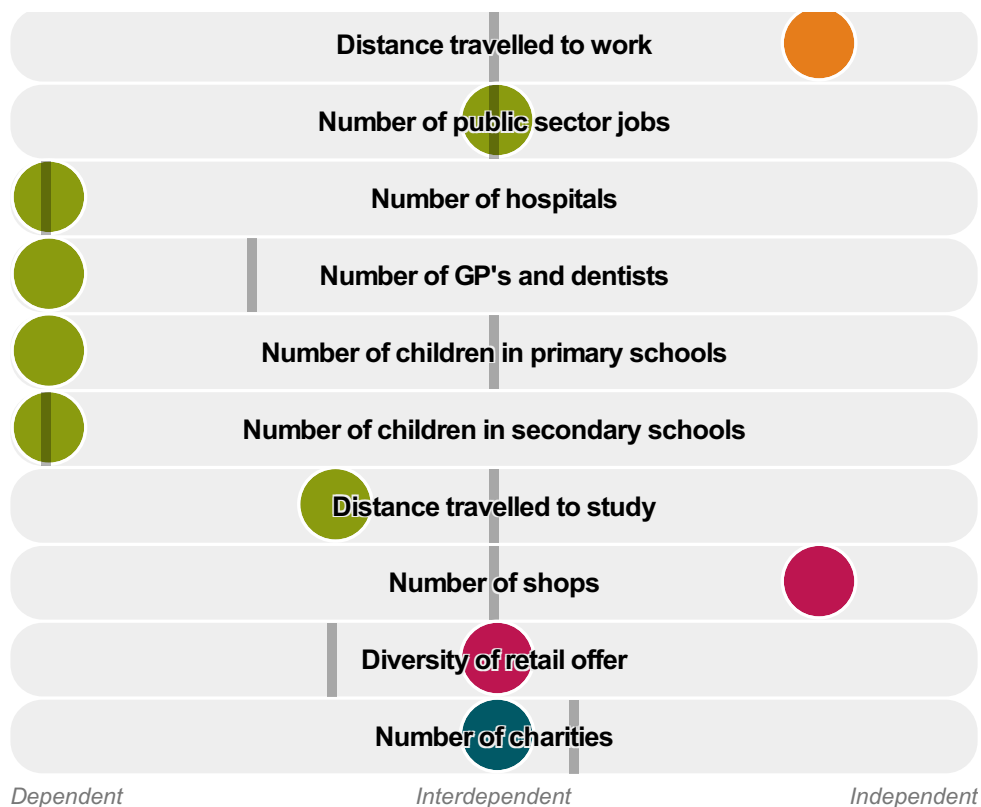
Inter-relationships

Dependent

Interdependent

Independent





Thornton is an **interdependent to dependent** town.

Combining inter-relationships and typology, Thornton is grouped with 42 other towns. It has similarities to these towns in terms of the number of charities, hospitals, children in secondary schools, and public sector jobs. It also has similarities in the distance travelled to study.

It differs in terms of the number of jobs, and shops. It also differs in the distance travelled to work. Thornton differs most from its group in the number of children in primary schools, and GP's and dentists.

- Employment
- Public
- Commercial
- Social
- ▬ Average for the category

Change

Population change 2001 to 2011

9%

More than similar towns per head of population

Population

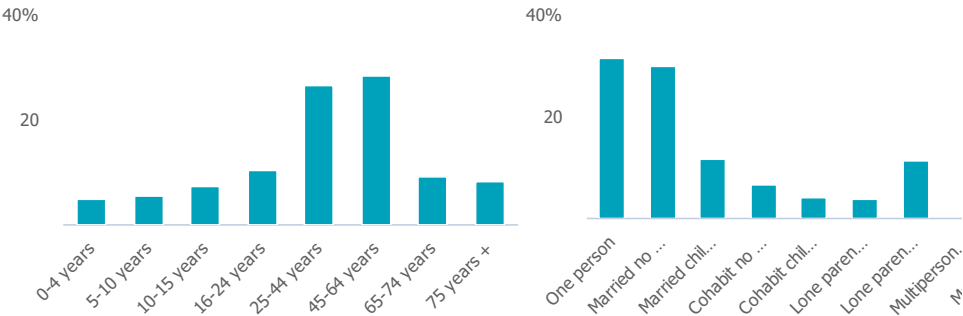
Population 2011

2k

More than similar towns

Age

Household composition



Employment

Jobs

1k

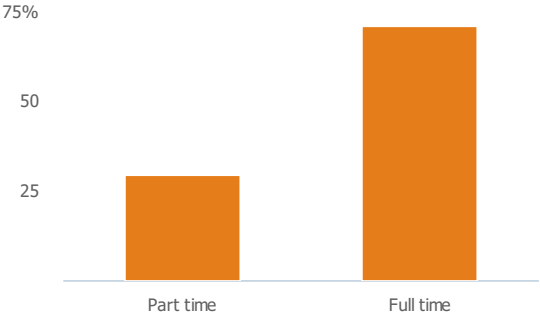
More than similar towns per head of population

Jobs change 2009 to 2014

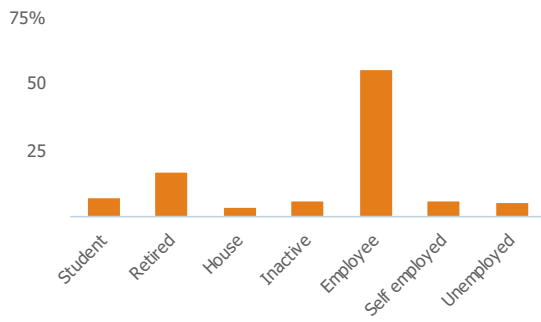
-49%

Less than similar towns per head of population

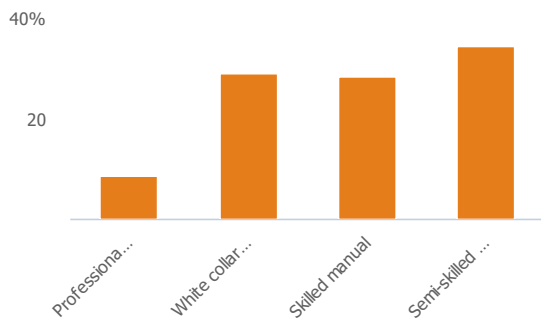
Employment type(% working full time vs part time aged 16-74)



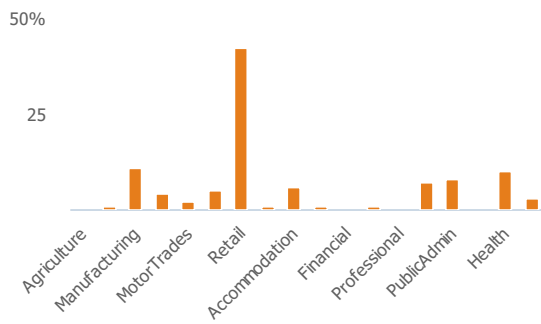
Occupation (% aged 16-74)



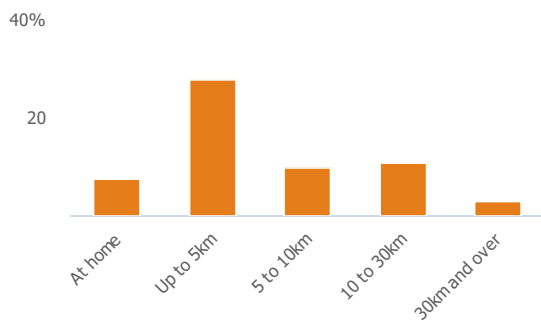
Social Grade (% households aged 16-64)



Sector Diversity

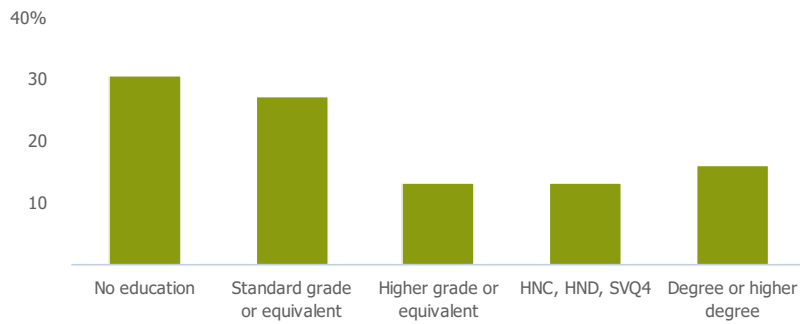


Distance travelled to work



Public

Education (% all people aged 16 and over)



Children in primary schools

0

Less than similar towns per head of population

Commuter Flow Map

Coloured and grey lines/pins show the main and smaller commuter flows, respectively, between this town and the other towns in Scotland.

Commercial

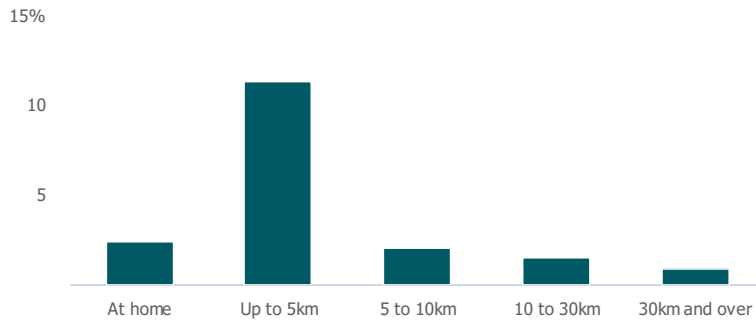
Number of people per shop

81

More than similar towns per head of population

Social

Distance travelled to study



Number of residents per charity

336

Less than similar towns per head of population

Connectivity and environment assets

Average download speed (MBs)

49

More than similar towns per head of population

Download

Download all of the Thornton data in PDF format.

[Download PDF \(https://usppreview.blob.core.windows.net/pdfs/Thornton.pdf\)](https://usppreview.blob.core.windows.net/pdfs/Thornton.pdf)

