

Stromness, Orkney

Population 1,758

Stromness in Orkney is the ferry terminal for boats from Scrabster. It has a long tradition as a whaling and herring port. In the 17th and 18th century it was the headquarters of the Hudson Bay Company. Today local industries include ship servicing.

This type of small town is extremely mixed in terms of demographics. There are particularly wide ranges of people, housing and activities. The number of older couples with no children is higher than average. There is a mix of professional and non-professional jobs, and part-time and self-employment are both important for a significant proportion of residents. Socioeconomic status is higher than in other types of town and there is a mix of professionals and nonprofessionals, those with higher and lower educational attainment.

Stromness is an independent to interdependent town.

Its most similar towns are [Thornhill \(Dumfries & Galloway\)](#), [Langholm](#), [Tarbert](#), and [Ullapool](#).

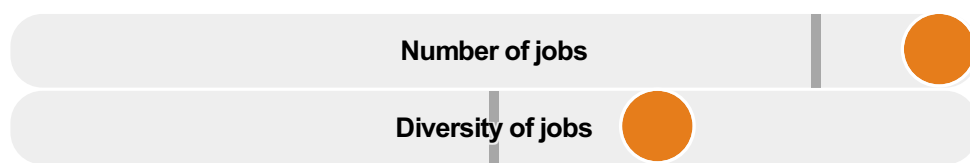
To gain more insight into Stromness, compare it to any of the other towns included in USP.

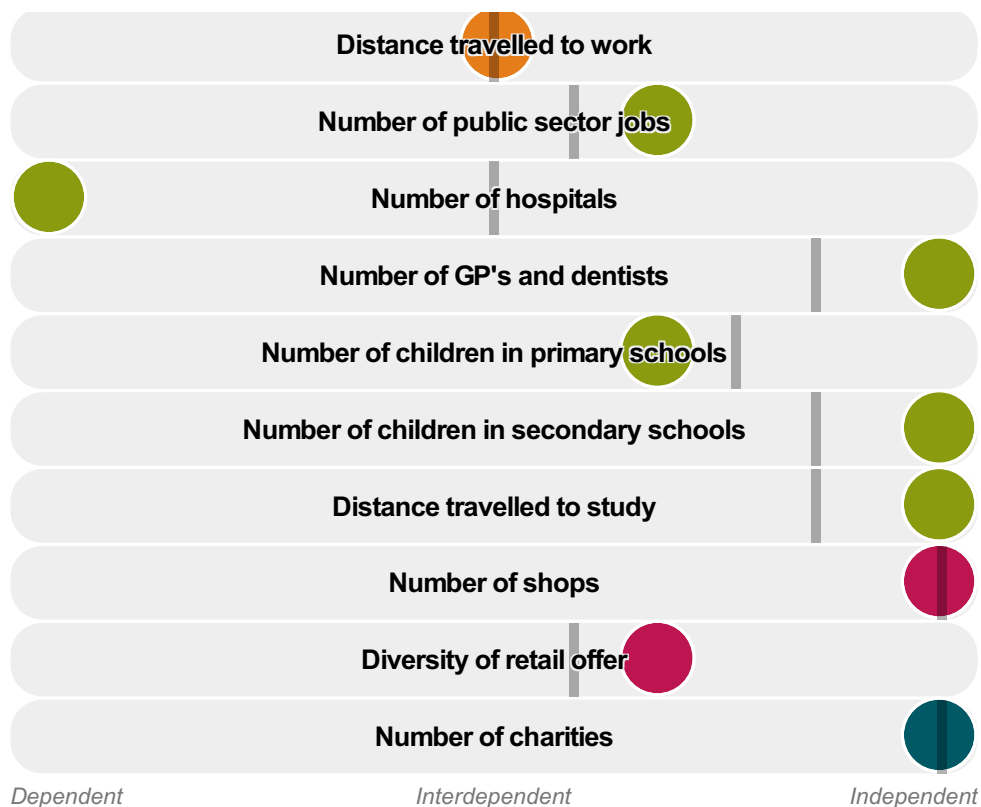
Inter-relationships

Dependent

Interdependent

Independent





Stromness is an **independent to interdependent** town.

Combining inter-relationships and typology, Stromness is grouped with 9 other towns. It has similarities to these towns in terms of the number of charities, children in primary schools, jobs, public sector jobs, shops, GP's and dentists, and diversity of retail offer. It also has similarities in the diversity of jobs, the distance travelled to work, and the distance travelled to study.

Stromness differs most from its group in the number of hospitals.

- Employment
- Public
- Commercial
- Social
- Average for the category

Change

Population change 2001 to 2011

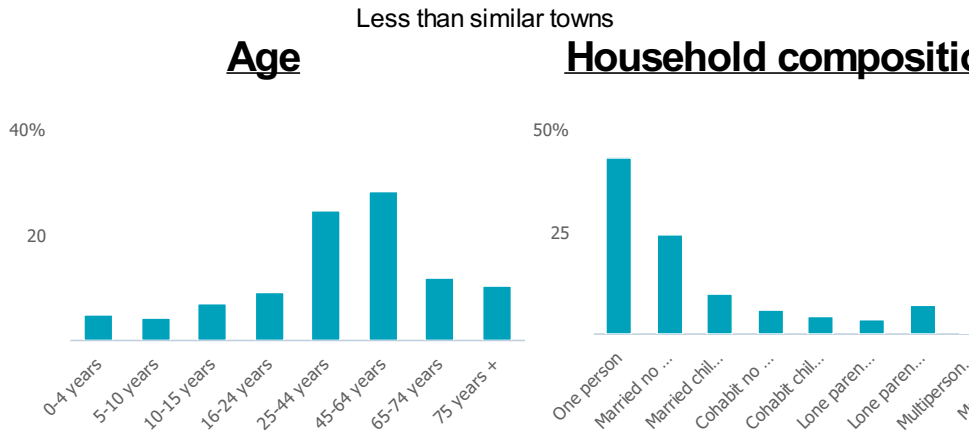
9%

More than similar towns per head of population

Population

Population 2011

2k



Employment

Jobs

1k

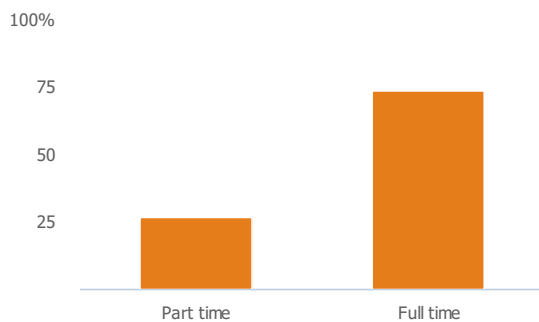
More than similar towns per head of population

Jobs change 2009 to 2014

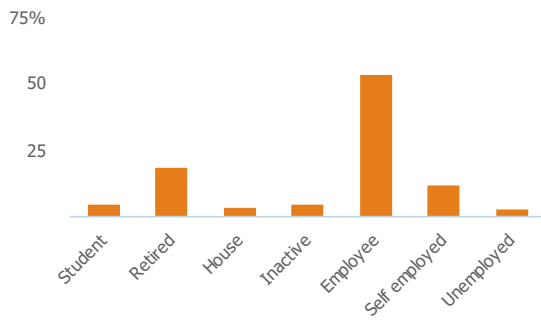
-8%

Less than similar towns per head of population

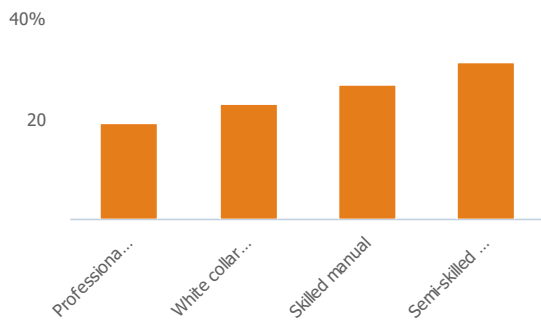
Employment type(% working full time vs part time aged 16-74)



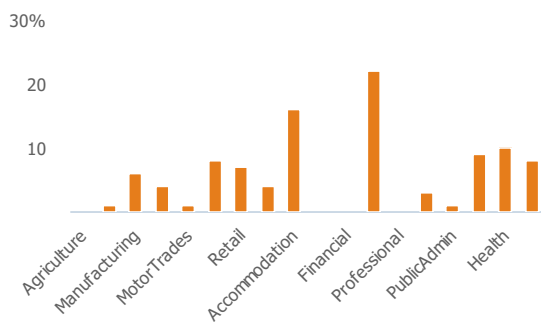
Occupation (% aged 16-74)



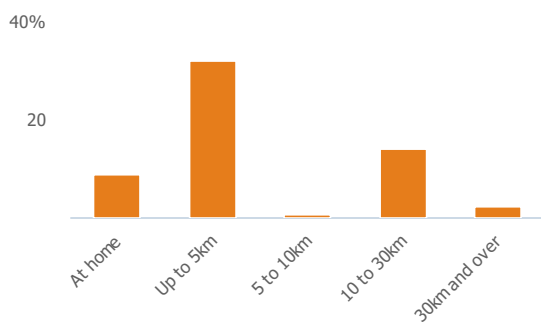
Social Grade (% households aged 16-64)



Sector Diversity

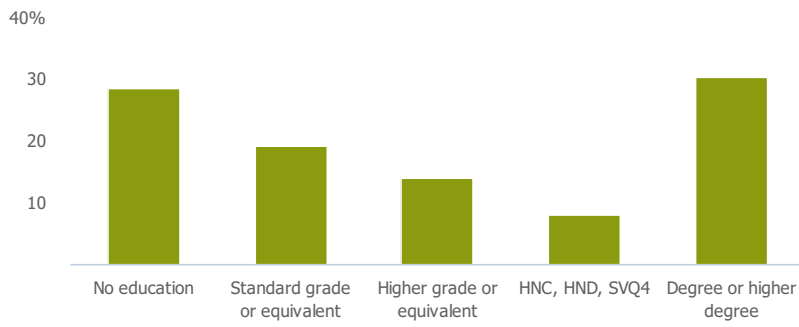


Distance travelled to work



Public

Education (% all people aged 16 and over)



Children in primary schools

152

Less than similar towns per head of population

Commuter Flow Map

Coloured and grey lines/pins show the main and smaller commuter flows, respectively, between this town and the other towns in Scotland.

Commercial

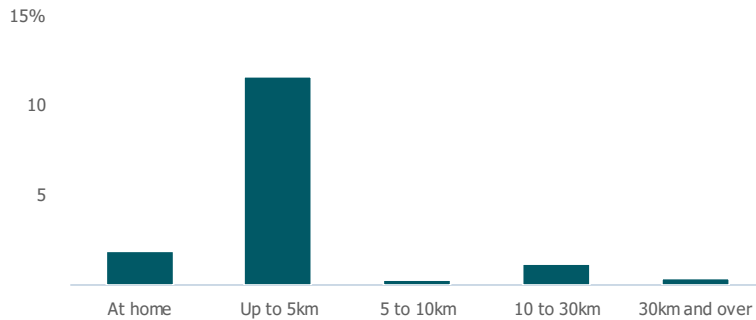
Number of people per shop

38

Less than similar towns per head of population

Social

Distance travelled to study



Number of residents per charity

61

More than similar towns per head of population

Connectivity and environment assets

Average download speed (MBs)

20

More than similar towns per head of population

Download

Download all of the Stromness data in PDF format.

[Download PDF \(https://usppreview.blob.core.windows.net/pdfs/Stromness.pdf\)](https://usppreview.blob.core.windows.net/pdfs/Stromness.pdf)



UNIVERSITY of STIRLING

