

# Stirling, Stirling

Population 36,142

Stirling is in Stirling Council area. Dating from the 6th century it now has city status. It was an early burgh and the site of notable battles such as Stirling Bridge in 1397. It is the administrative centre for Stirling Council. The city serves as a commercial and service centre. A military regiment is still stationed at Stirling Castle. Stirling University, SEPA, Prudential are major employers. The Springkerse industrial estate includes small manufacturers and service industries.

This type of large town is extremely mixed in terms of demographics. There is a particularly wide range of people, housing and activities. The number of older couples with no children is higher than average. There is a mix of professional and non-professional jobs, and part-time and self-employment are both important for a significant proportion of residents. Socioeconomic status is higher than in other kinds of town and there is a mix of professionals and nonprofessionals, those with higher and lower educational attainment.

Stirling is an independent to interdependent town.

Its most similar towns are [Dunfermline](#), [Galashiels](#), [Inverurie](#), and [Peterhead](#).

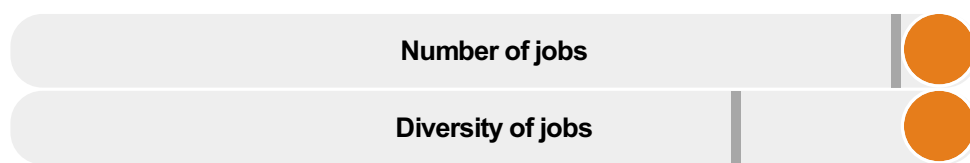
To gain more insight into Stirling, compare it to any of the other towns included in USP.

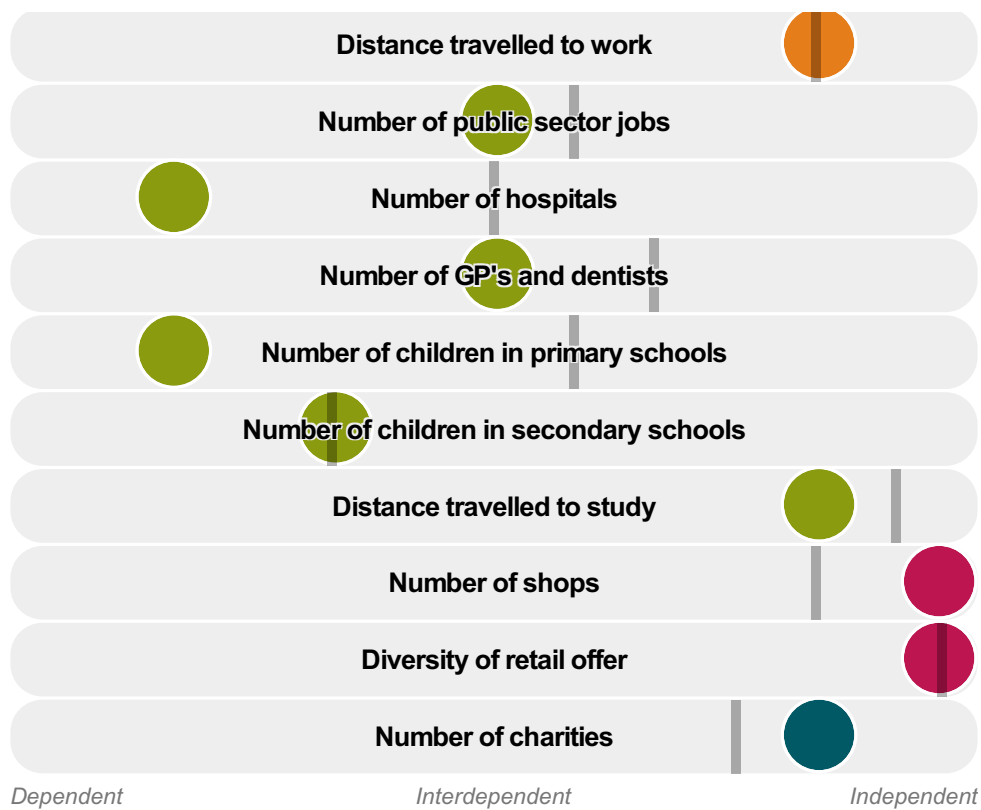
## Inter-relationships

*Dependent*

*Interdependent*

*Independent*





Stirling is an **independent to interdependent** town.

Combining inter-relationships and typology, Stirling is grouped with 9 other towns. It has similarities to these towns in terms of the number of charities, children in secondary schools, jobs, public sector jobs, shops, and diversity of retail offer. It also has similarities in the distance travelled to work, and the distance travelled to study.

Stirling differs most from its group in the number of hospitals, and children in primary schools.

- Employment
- Public
- Commercial
- Social
- Average for the category

## Change

### Population change 2001 to 2011

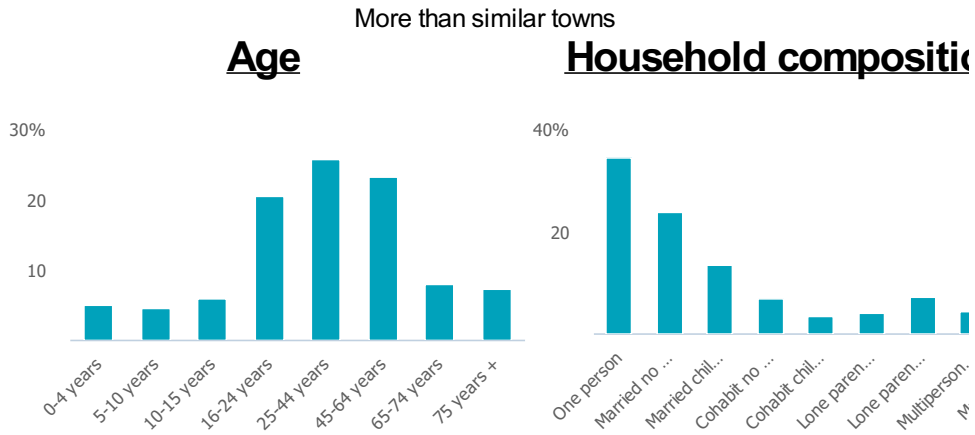
8%

Less than similar towns per head of population

## Population

### Population 2011

36k



## Employment

### Jobs

28k

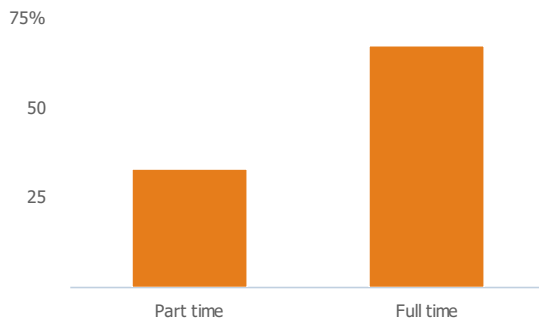
More than similar towns per head of population

### Jobs change 2009 to 2014

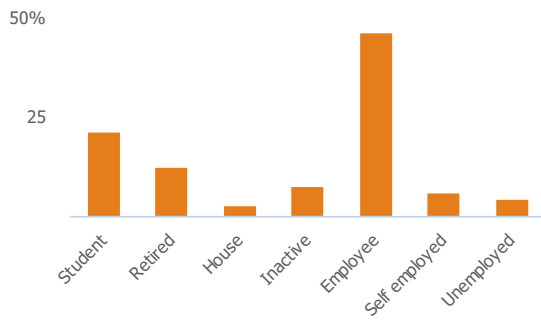
-14%

Less than similar towns per head of population

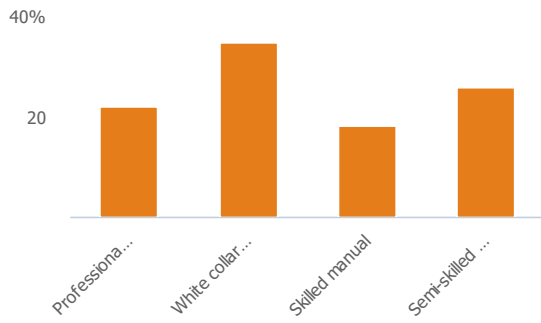
### Employment type(% working full time vs part time aged 16-74)



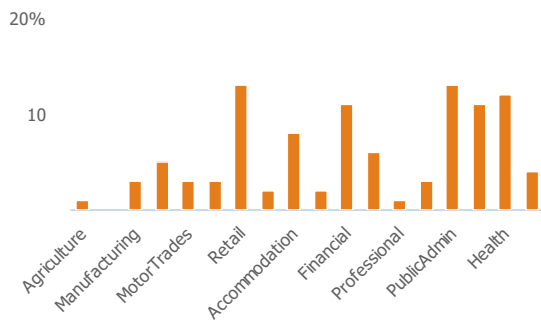
### Occupation (% aged 16-74)



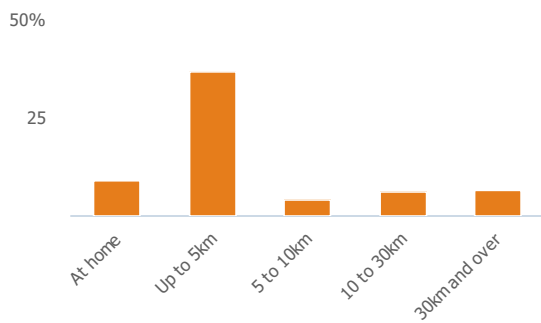
### Social Grade (% households aged 16-64)



### Sector Diversity

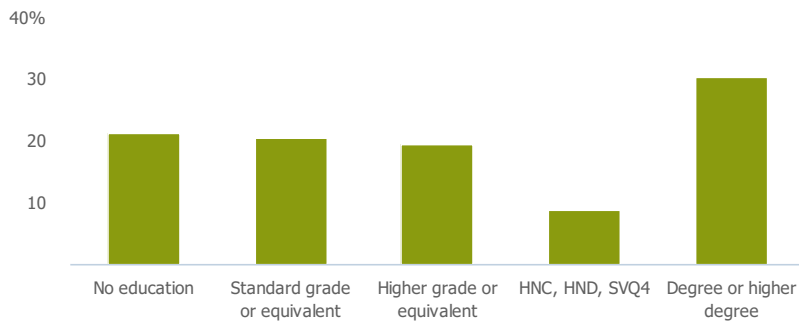


### Distance travelled to work



## Public

### Education (% all people aged 16 and over)



## Children in primary schools

2k

Less than similar towns per head of population

## Commuter Flow Map

Coloured and grey lines/pins show the main and smaller commuter flows, respectively, between this town and the other towns in Scotland.

## Commercial

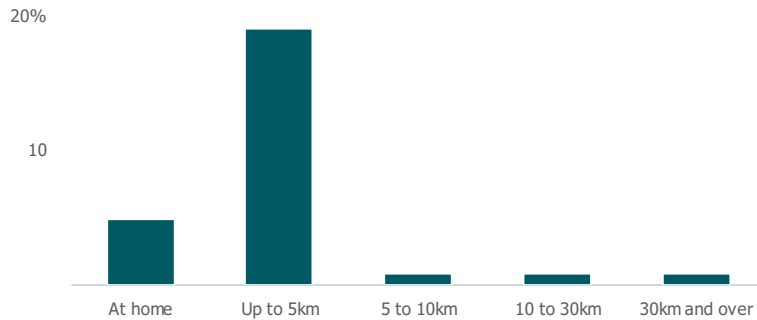
Number of people per shop

57

More than similar towns per head of population

## Social

### Distance travelled to study



### Number of residents per charity

144

Less than similar towns per head of population

## Connectivity and environment assets

### Average download speed (MBs)

22

Less than similar towns per head of population

## Download

Download all of the Stirling data in PDF format.

[Download PDF \(https://usppreview.blob.core.windows.net/pdfs/Stirling.pdf\)](https://usppreview.blob.core.windows.net/pdfs/Stirling.pdf)

