

# Springside, North Ayrshire

Population 1,259

Springside is in North Ayrshire. Its origins are due to its location on the road south from Kilmarnock to Irvine although the original settlement was known as Bankhead. Springside was a staging post. In the late 19th century coal mining brought new employment and workers to the town and the mine owners built new housing. By the 1950s all the pits were closed. Public housing replaced the miners' rows. Extensive new housing estates have added to the town which is primarily residential.

Social and council housing are the norm in this type of small town. Manufacturing and construction are the dominant forms of employment. Health and social work services are particularly active. There is a higher level of unemployment. Educational attainment is low. Car ownership is low, meaning that many residents in these towns are reliant on public transport.

Springside is a dependent town.

Its most similar towns are [High Valleyfield](#), [Logan](#), [Balintore](#), and [Caldercruix](#).

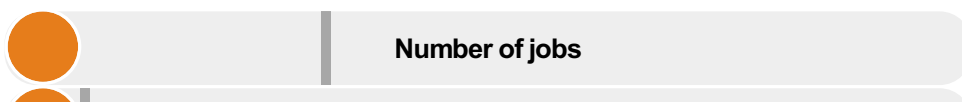
To gain more insight into Springside, compare it to any of the other towns included in USP.

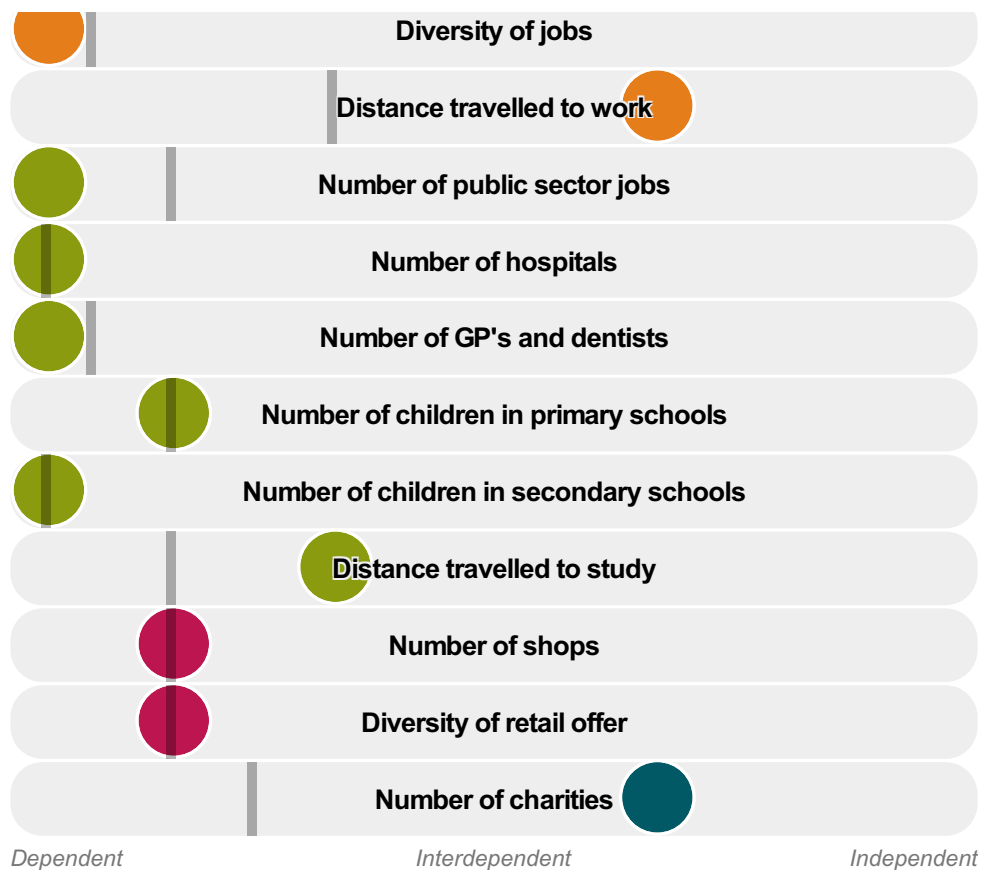
## Inter-relationships

*Dependent*

*Interdependent*

*Independent*





Springside is a **dependent** town.

Combining inter-relationships and typology, Springside is grouped with 7 other towns. It has similarities to these towns in terms of the number of hospitals, children in primary schools, children in secondary schools, public sector jobs, shops, GP's and dentists, and diversity of retail offer. It also has similarities in the diversity of jobs, and the distance travelled to study.

It differs in terms of the number of charities. It also differs in the distance travelled to work. Springside differs most from its group in the number of jobs.

- Employment
- Public
- Commercial
- Social
- ▬ Average for the category

## Change

### Population change 2001 to 2011

6%

More than similar towns per head of population

## Population

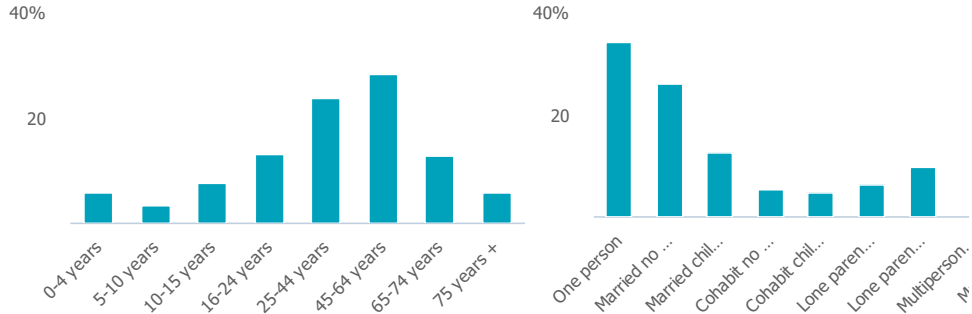
# Population 2011

1k

Less than similar towns

## Age

## Household composition



## Employment

### Jobs

51

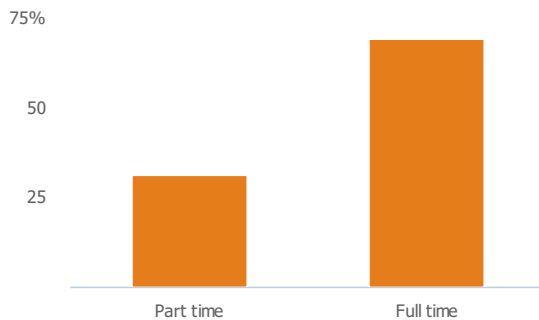
Less than similar towns per head of population

### Jobs change 2009 to 2014

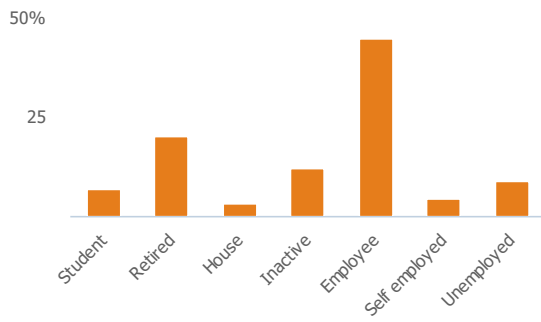
24%

More than similar towns per head of population

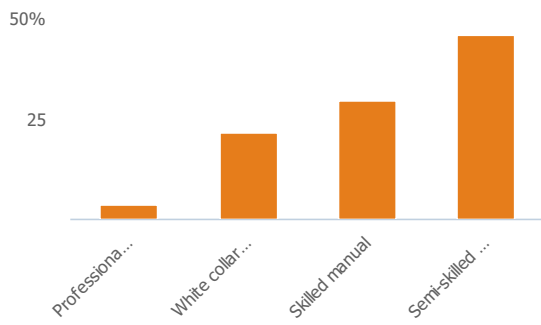
### Employment type(% working full time vs part time aged 16-74)



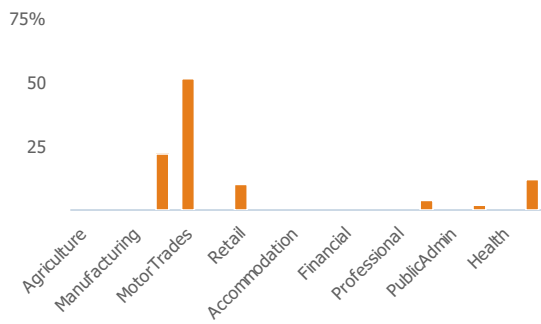
### Occupation (% aged 16-74)



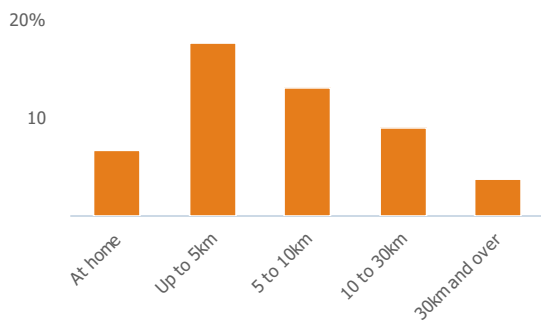
### Social Grade (% households aged 16-64)



### Sector Diversity

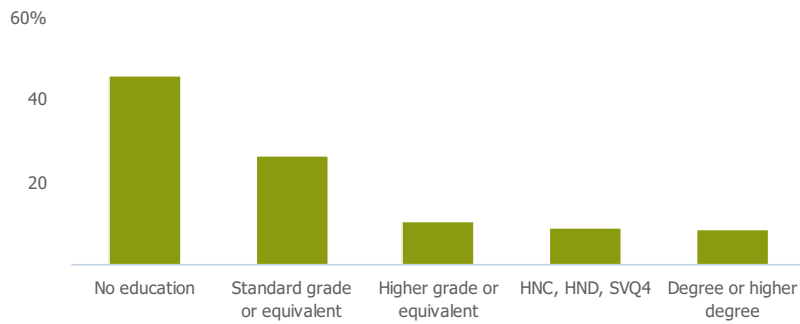


### Distance travelled to work



## Public

### Education (% all people aged 16 and over)



## Children in primary schools

76

More than similar towns per head of population

## Commuter Flow Map

Coloured and grey lines/pins show the main and smaller commuter flows, respectively, between this town and the other towns in Scotland.

## Commercial

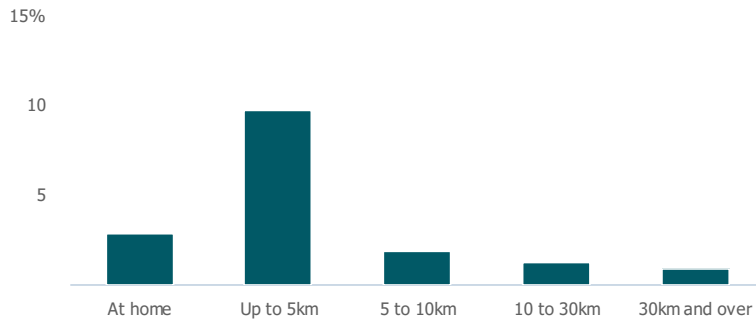
Number of people per shop

315

More than similar towns per head of population

## Social

### Distance travelled to study



### Number of residents per charity

252

Less than similar towns per head of population

## Connectivity and environment assets

### Average download speed (MBs)

16

More than similar towns per head of population

## Download

Download all of the Springside data in PDF format.

[Download PDF \(https://usppreview.blob.core.windows.net/pdfs/Springside.pdf\)](https://usppreview.blob.core.windows.net/pdfs/Springside.pdf)

