

# Rosyth, Fife

Population 13,440

Rosyth is in Fife. The town is dominated by the Royal Dockyard and cruise ship and freight port. It originated as a garden city and port for Dunfermline in 1909. Housing was built for dockyard workers. A naval base operated until 1994. The dockyard was privatised and operated by Babcock International. A recent business park Rosyth Europarc is attracting new business to Rosyth (including intelligent Finance and Royal Bank of Scotland).

This type of large town is extremely mixed in terms of demographics. There is a particularly wide range of people, housing and activities. The number of older couples with no children is higher than average. There is a mix of professional and non-professional jobs, and part-time and self-employment are both important for a significant proportion of residents. Socioeconomic status is higher than in other kinds of town and there is a mix of professionals and nonprofessionals, those with higher and lower educational attainment.

Rosyth is an interdependent town.

Its most similar towns are [Cambuslang](#), [Tranent](#), [Musselburgh](#), and [Penicuik](#).

To gain more insight into Rosyth, compare it to any of the other towns included in USP.

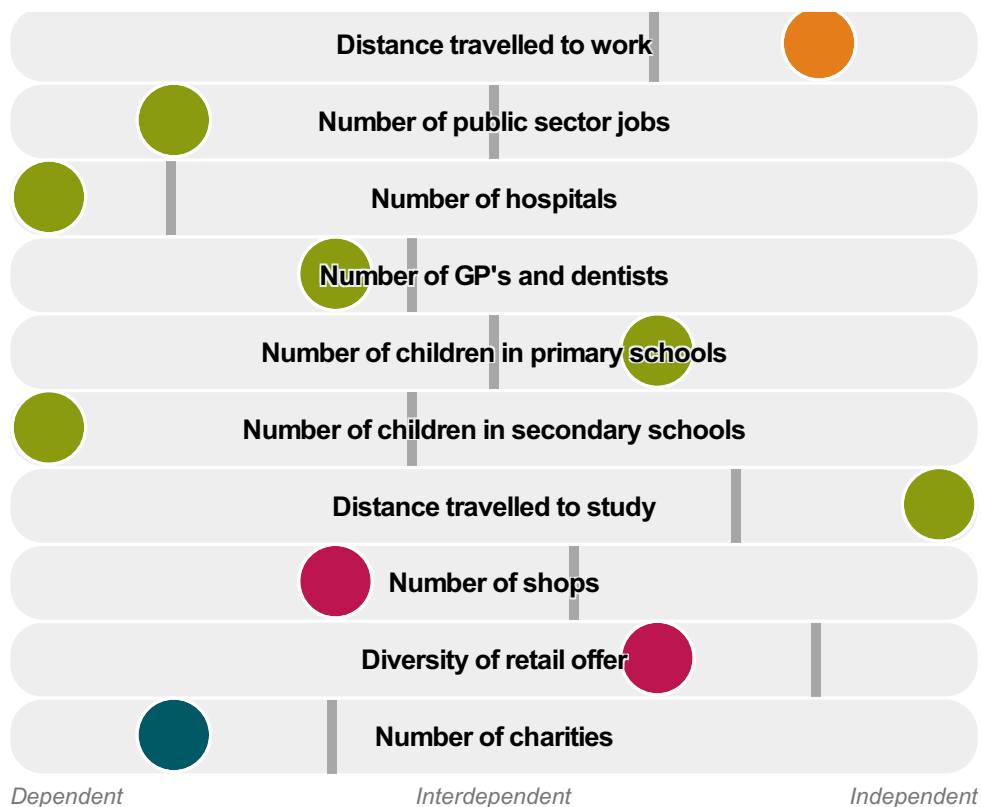
## Inter-relationships

*Dependent*

*Interdependent*

*Independent*





Rosyth is an **interdependent** town.

Combining inter-relationships and typology, Rosyth is grouped with 12 other towns. It has similarities to these towns in terms of the number of charities, hospitals, GP's and dentists, and diversity of retail offer.

It differs in terms of the number of jobs, and public sector jobs. It also differs in the diversity of jobs, and the distance travelled to study. Rosyth differs most from its group in the number of children in secondary schools.

- Employment
- Public
- Commercial
- Social
- ▬ Average for the category

## Change

### Population change 2001 to 2011

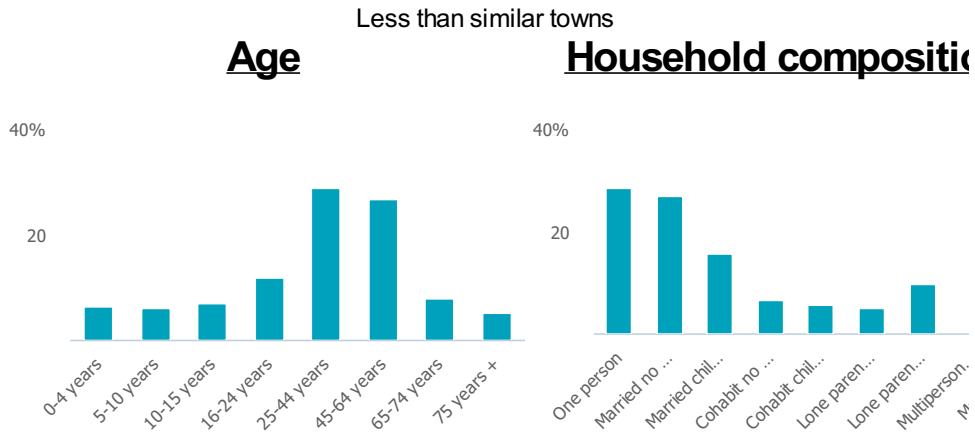
9%

More than similar towns per head of population

## Population

### Population 2011

13k



**Employment**

**Jobs**

8k

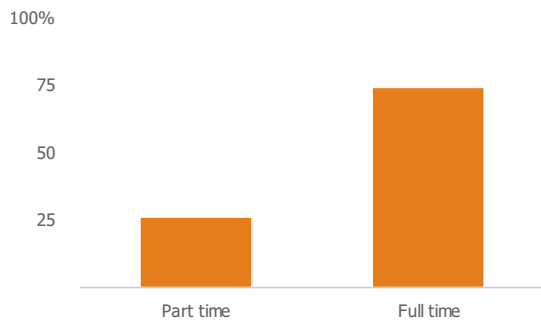
More than similar towns per head of population

**Jobs change 2009 to 2014**

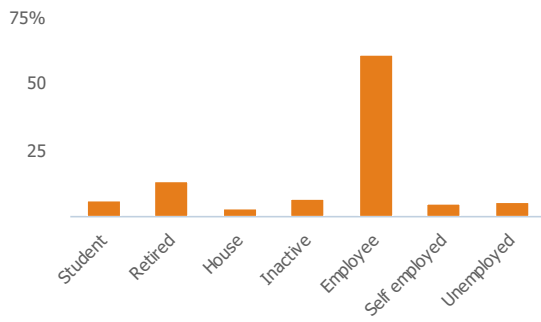
21%

More than similar towns per head of population

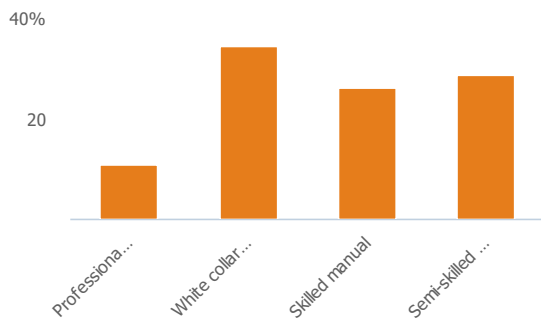
**Employment type(% working full time vs part time aged 16-74)**



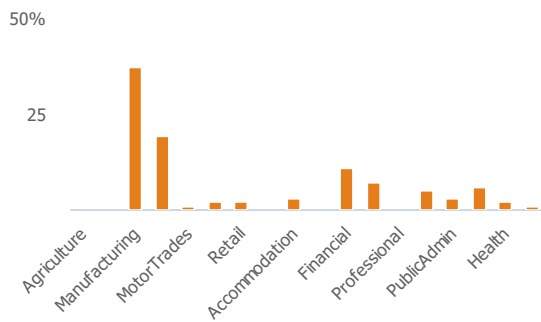
**Occupation (% aged 16-74)**



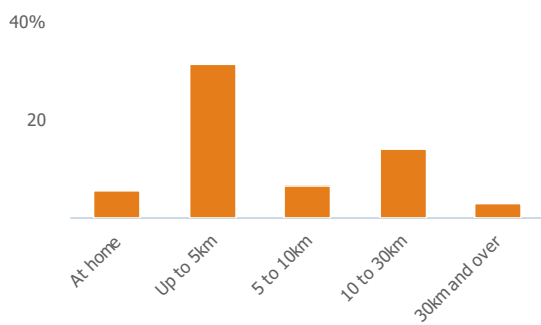
### Social Grade (% households aged 16-64)



### Sector Diversity

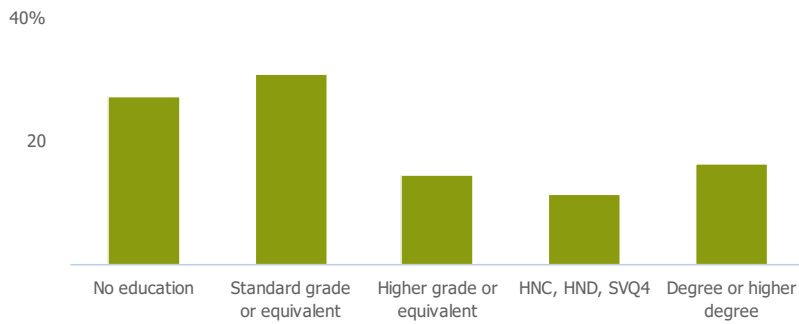


### Distance travelled to work



## Public

### Education (% all people aged 16 and over)



## Children in primary schools

1k

More than similar towns per head of population

## Commuter Flow Map

Coloured and grey lines/pins show the main and smaller commuter flows, respectively, between this town and the other towns in Scotland.

## Commercial

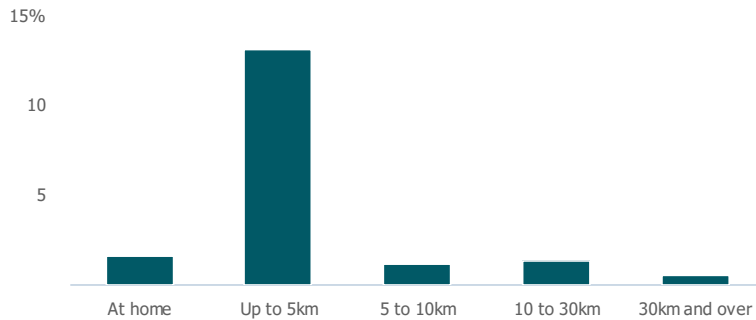
Number of people per shop

228

Less than similar towns per head of population

## Social

### Distance travelled to study



### Number of residents per charity

611

More than similar towns per head of population

## Connectivity and environment assets

### Average download speed (MBs)

22

Less than similar towns per head of population

## Download

Download all of the Rosyth data in PDF format.

[Download PDF \(https://usppreview.blob.core.windows.net/pdfs/Rosyth.pdf\)](https://usppreview.blob.core.windows.net/pdfs/Rosyth.pdf)



UNIVERSITY of STIRLING

