

# Renfrew, Renfrewshire

Population 21,854

Renfrew is in Renfrewshire. It has an industrial history of shipbuilding and steel engineering. Doosan Babcock still operates in Renfrew. It was the location of a key ferry across the River Clyde before the building of the Clyde Tunnel in the 1960s. It was also the site of the original airport for Glasgow. The Braehead Shopping Centre is located in Renfrew. There are industries including Diageo and pallet distribution.

This type of large town is extremely mixed in terms of demographics. There is a particularly wide range of people, housing and activities. The number of older couples with no children is higher than average. There is a mix of professional and non-professional jobs, and part-time and self-employment are both important for a significant proportion of residents. Socioeconomic status is higher than in other kinds of town and there is a mix of professionals and nonprofessionals, those with higher and lower educational attainment.

Renfrew is an interdependent to independent town.

Its most similar towns are [Ayr](#), [Bathgate](#), [Kilmarnock](#), and [Kirkintilloch](#).

To gain more insight into Renfrew, compare it to any of the other towns included in USP.

## Inter-relationships

*Dependent*

*Interdependent*

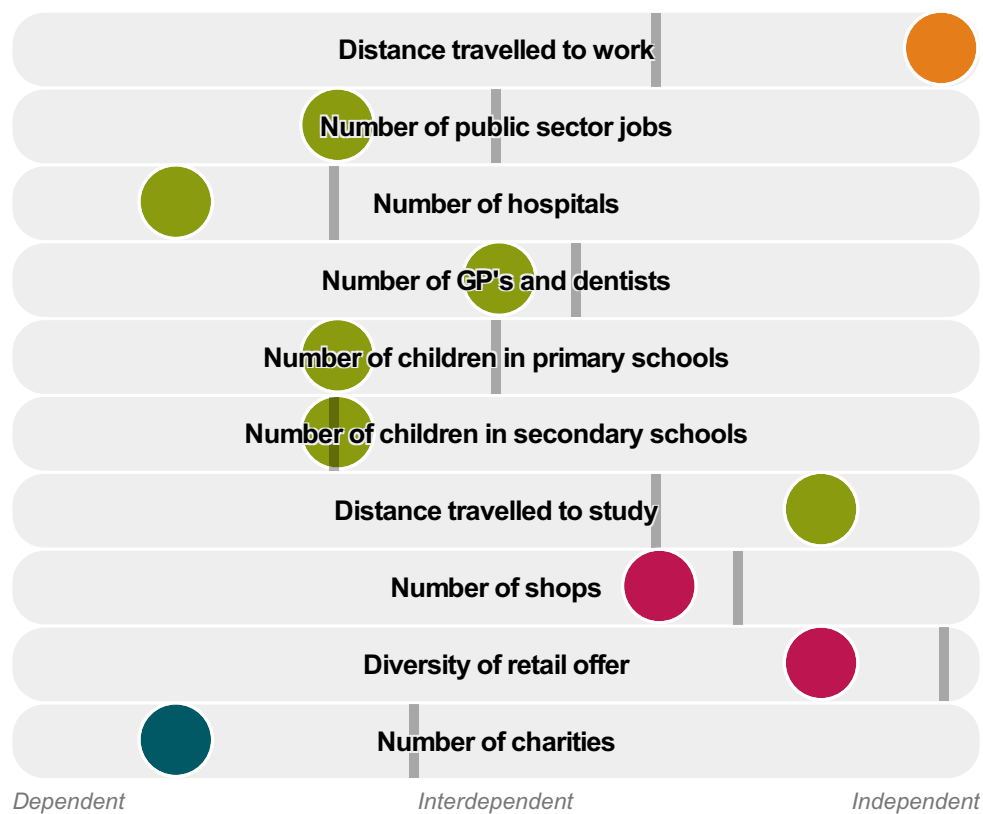
*Independent*

Number of jobs



Diversity of jobs





Renfrew is an **interdependent to independent** town.

Combining inter-relationships and typology, Renfrew is grouped with 7 other towns. It has similarities to these towns in terms of the number of hospitals, children in primary schools, children in secondary schools, jobs, public sector jobs, shops, GP's and dentists, and diversity of retail offer. It also has similarities in the diversity of jobs, and the distance travelled to study.

It differs in terms of the distance travelled to work. Renfrew differs most from its group in the number of charities.

- Employment
- Public
- Commercial
- Social
- ▬ Average for the category

## Change

### Population change 2001 to 2011

8%

Less than similar towns per head of population

## Population

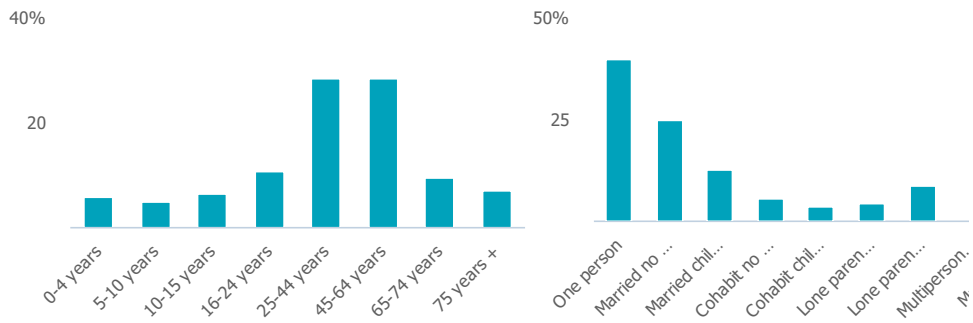
### Population 2011

22k

Less than similar towns

**Age**

**Household composition**



**Employment**

**Jobs**

7k

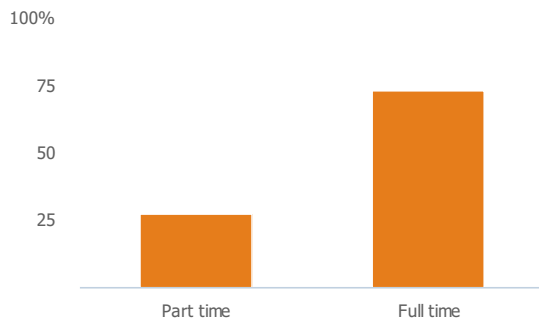
Less than similar towns per head of population

**Jobs change 2009 to 2014**

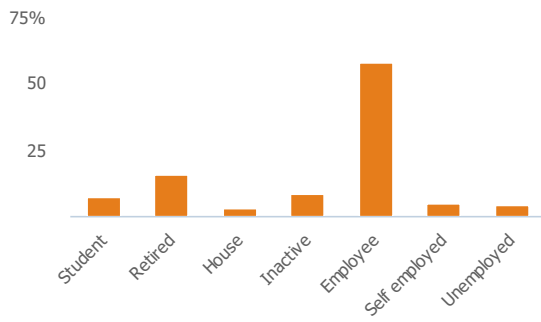
-17%

Less than similar towns per head of population

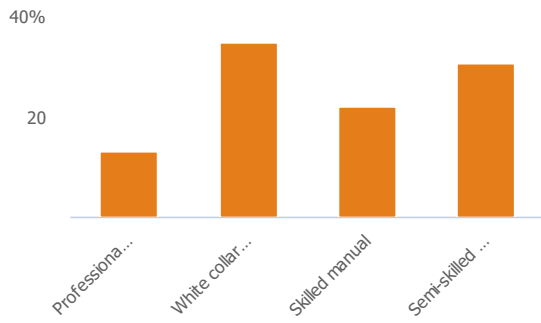
**Employment type(% working full time vs part time aged 16-74)**



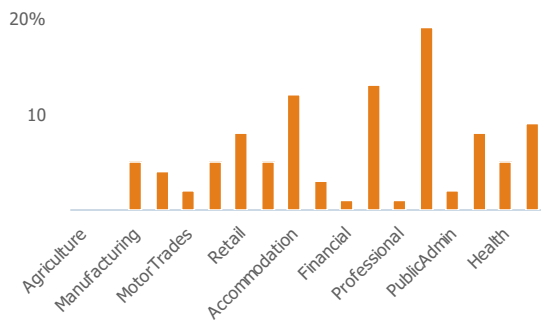
**Occupation (%aged 16-74)**



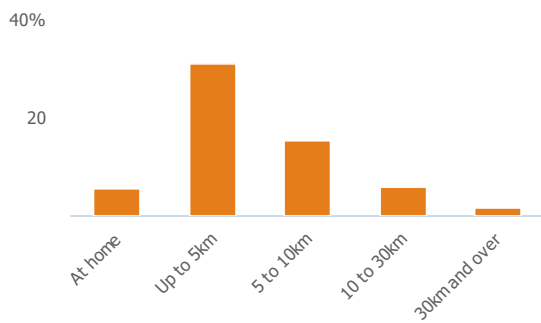
### Social Grade (% households aged 16-64)



### Sector Diversity

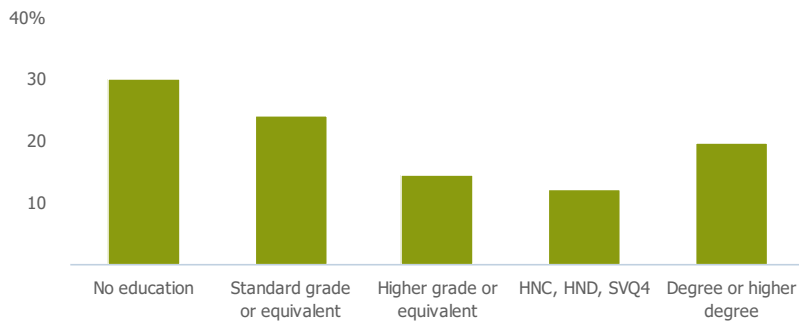


### Distance travelled to work



## Public

### Education (% all people aged 16 and over)



## Children in primary schools

2k

Less than similar towns per head of population

## Commuter Flow Map

Coloured and grey lines/pins show the main and smaller commuter flows, respectively, between this town and the other towns in Scotland.

## Commercial

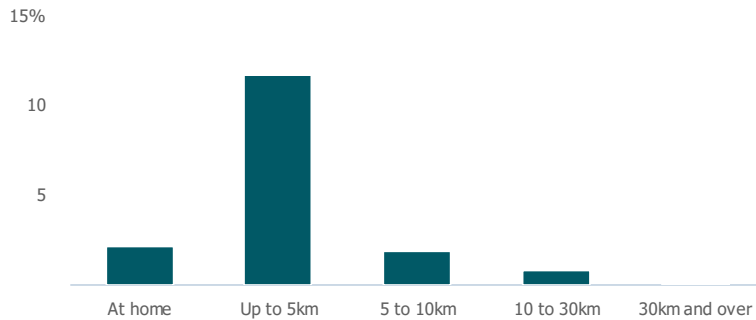
Number of people per shop

95

Less than similar towns per head of population

## Social

### Distance travelled to study



### Number of residents per charity

624

More than similar towns per head of population

## Connectivity and environment assets

### Average download speed (MBs)

52

More than similar towns per head of population

## Download

Download all of the Renfrew data in PDF format.

[Download PDF \(https://usppreview.blob.core.windows.net/pdfs/Renfrew.pdf\)](https://usppreview.blob.core.windows.net/pdfs/Renfrew.pdf)

