

# Port Glasgow, Inverclyde

Population 15,414

Port Glasgow is in Inverclyde. It became a port for Glasgow before the river was made navigable to Glasgow. Ship building became a key industry and Fergusons remains a working shipyard.

Social and council housing are the norm in these large towns. Manufacturing and construction are the dominant forms of employment. Health and social work services are particularly active. There is a relatively high level of unemployment. Educational attainment is low. Car ownership is low, meaning that many residents in these towns are reliant on public transport.

Port Glasgow is an interdependent town.

Its most similar towns are [Larkhall](#), [Alexandria](#), [Dumbarton](#), and [Grangemouth](#).

To gain more insight into Port Glasgow, compare it to any of the other towns included in USP.

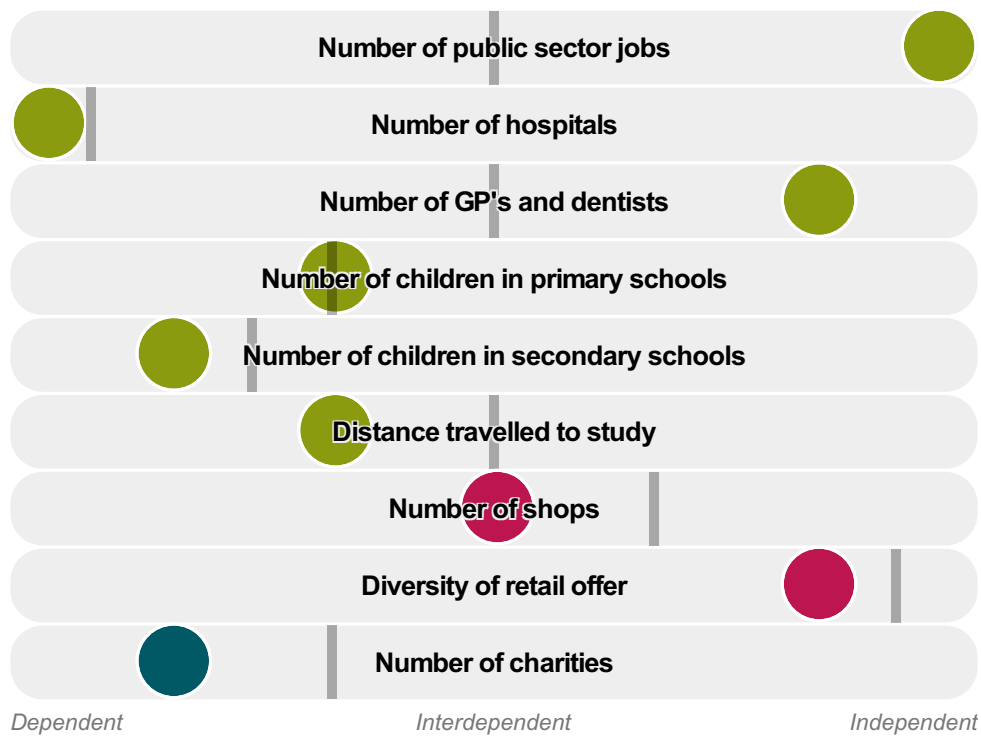
## Inter-relationships

*Dependent*

*Interdependent*

*Independent*





Port Glasgow is an **interdependent** town.

Combining inter-relationships and typology, Port Glasgow is grouped with 11 other towns. It has similarities to these towns in terms of the number of charities, hospitals, children in primary schools, children in secondary schools, shops, and diversity of retail offer. It also has similarities in the diversity of jobs, and the distance travelled to work.

It differs in terms of the number of public sector jobs. Port Glasgow differs most from its group in the number of GP's and dentists.

- Employment
- Public
- Commercial
- Social
- Average for the category

## Change

### Population change 2001 to 2011

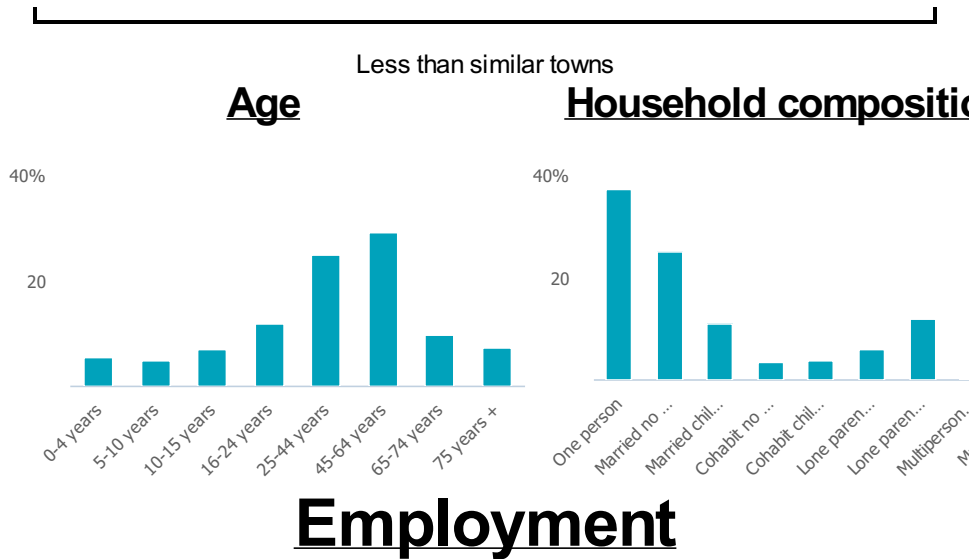
-7%

Less than similar towns per head of population

## Population

### Population 2011

15k



### Jobs

3k

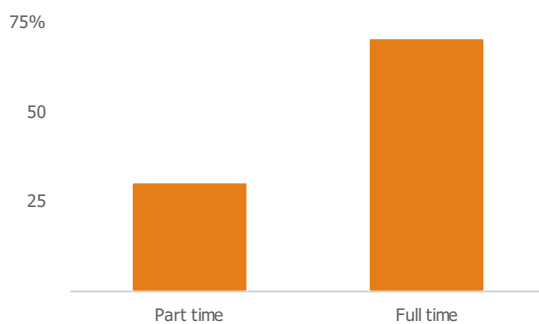
Less than similar towns per head of population

### Jobs change 2009 to 2014

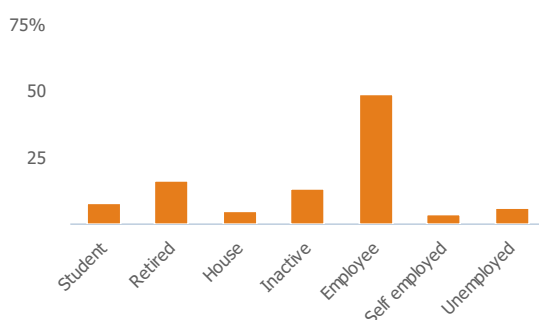
4%

More than similar towns per head of population

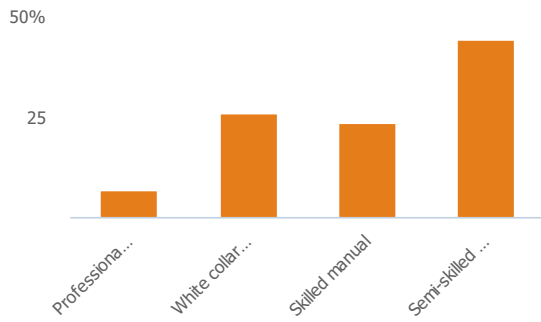
### Employment type(% working full time vs part time aged 16-74)



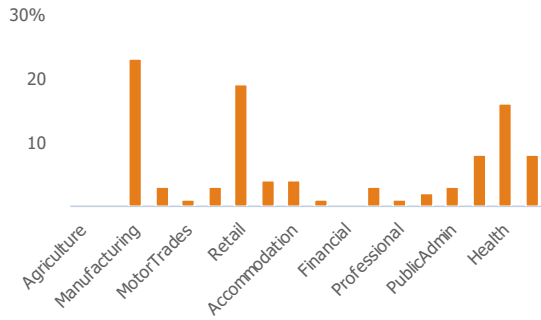
### Occupation (% aged 16-74)



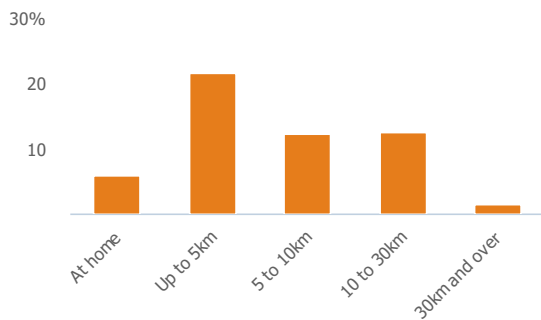
## Social Grade (% households aged 16-64)



## Sector Diversity

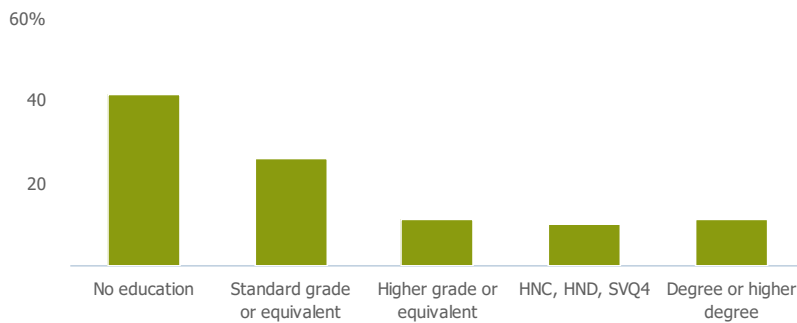


## Distance travelled to work



## Public

## Education (% all people aged 16 and over)



## Children in primary schools

1k

More than similar towns per head of population

# Commuter Flow Map

Coloured and grey lines/pins show the main and smaller commuter flows, respectively, between this town and the other towns in Scotland.

## Commercial

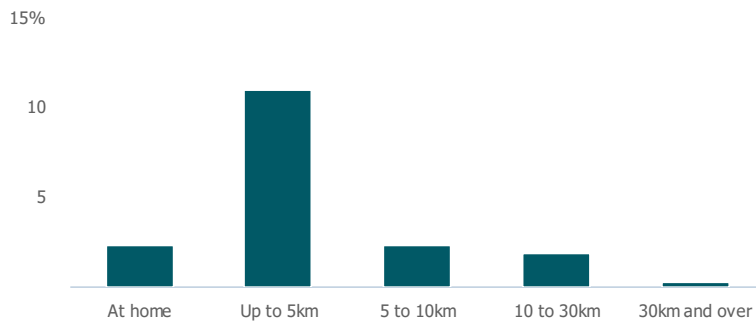
Number of people per shop

126

Less than similar towns per head of population

## Social

Distance travelled to study



### Number of residents per charity

670

More than similar towns per head of population

## Connectivity and environment assets

### Average download speed (MBs)

62

More than similar towns per head of population

## Download

Download all of the Port Glasgow data in PDF format.

[Download PDF \(https://usppreview.blob.core.windows.net/pdfs/Port%20Glasgow.pdf\)](https://usppreview.blob.core.windows.net/pdfs/Port%20Glasgow.pdf)

