

Old Kilpatrick, West Dunbartonshire

Population 2,970

Old Kilpatrick is in West Dunbartonshire. Originally a Roman Fort at the end of the Antonine Wall it would be later located on the Forth and Clyde Canal and be at the end of the Erskine Bridge. In the 18th century it was sustained by spinning and weaving. In the early 1990s it saw further expansion with new housing. Industries include R B Steel and there is a business park. The town is highly accessible to Glasgow and Clydebank as well as to Renfrewshire.

This type of small town is extremely mixed in terms of demographics. There are particularly wide ranges of people, housing and activities. The number of older couples with no children is higher than average. There is a mix of professional and non-professional jobs, and part-time and self-employment are both important for a significant proportion of residents. Socioeconomic status is higher than in other types of town and there is a mix of professionals and nonprofessionals, those with higher and lower educational attainment.

Old Kilpatrick is an interdependent to dependent town.

Its most similar towns are [Carfin](#), [Chirnside](#), [Rosehearty](#), and [St Cyrus](#).

To gain more insight into Old Kilpatrick, compare it to any of the other towns included in USP.

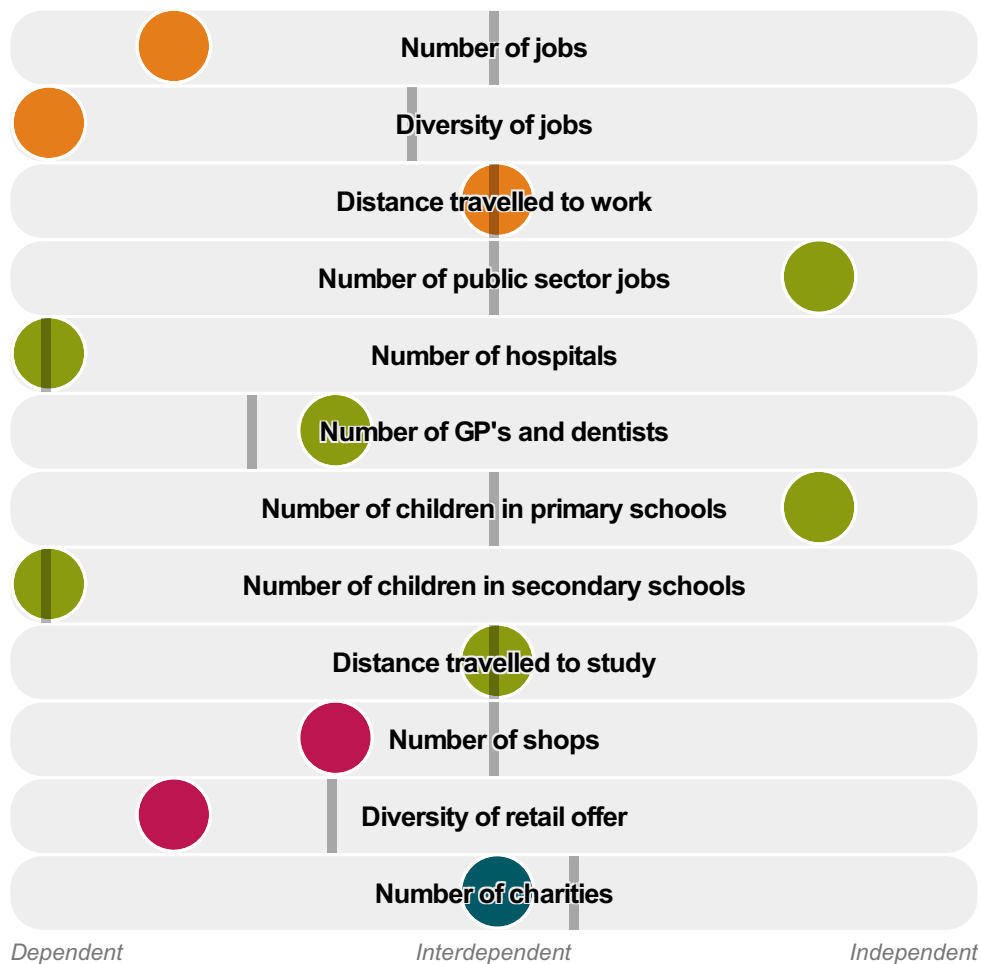
Inter-relationships

Dependent

Interdependent

Independent

Old Kilpatrick is an **interdependent to dependent** town.



Combining inter-relationships and typology, Old Kilpatrick is grouped with 42 other towns. It has similarities to these towns in terms of the number of charities, hospitals, children in secondary schools, shops, GP's and dentists, and diversity of retail offer. It also has similarities in the distance travelled to work, and the distance travelled to study.

It differs in terms of the number of children in primary schools, jobs, and public sector jobs. Old Kilpatrick differs most from its group in the diversity of jobs.

- Employment
- Public
- Commercial
- Social
- ▬ Average for the category

Change

Population change 2001 to 2011

-5%

Less than similar towns per head of population

Population

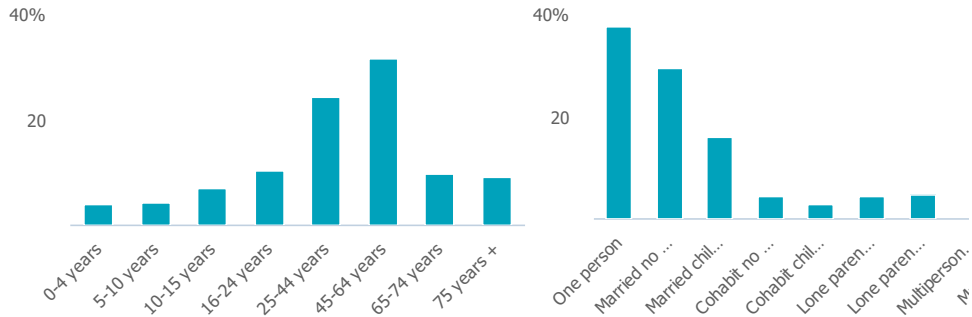
Population 2011

3k

More than similar towns

Age

Household composition



Employment

Jobs

412

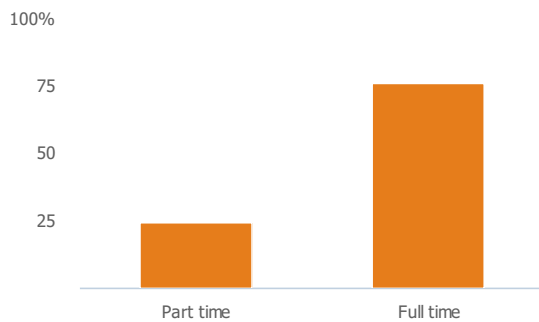
Less than similar towns per head of population

Jobs change 2009 to 2014

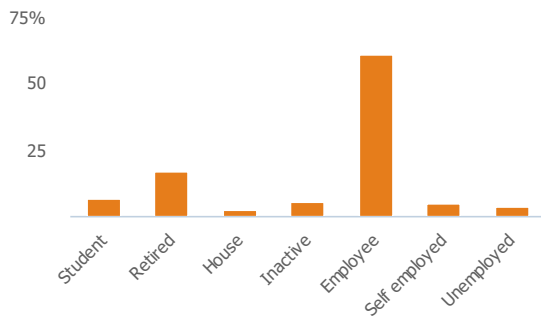
-145%

Less than similar towns per head of population

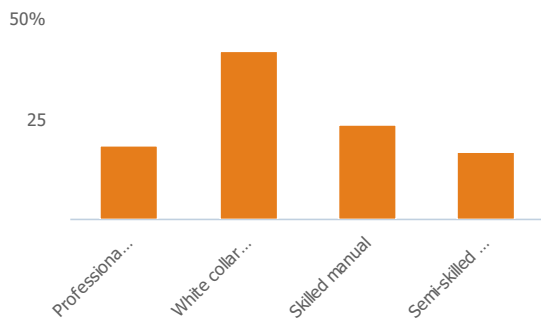
Employment type(% working full time vs part time aged 16-74)



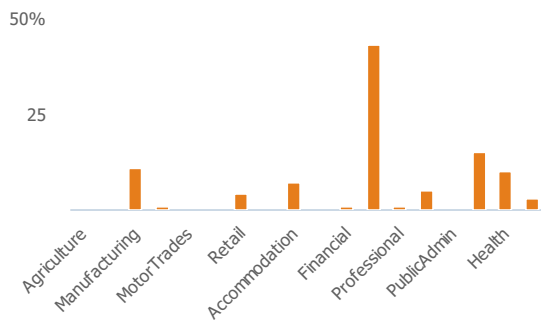
Occupation (% aged 16-74)



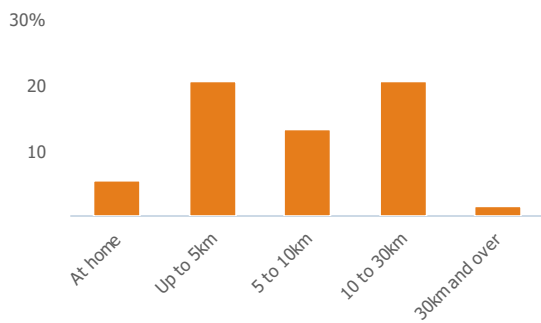
Social Grade (% households aged 16-64)



Sector Diversity

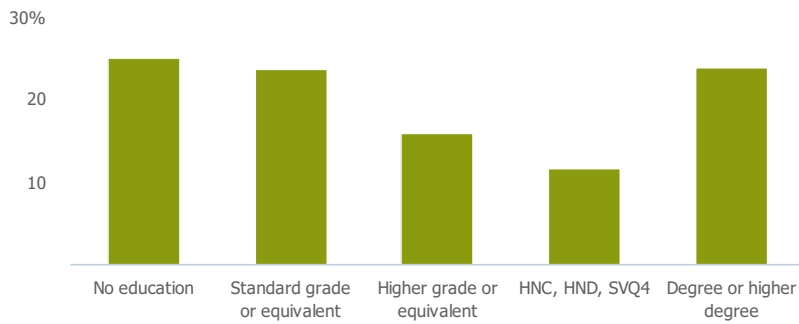


Distance travelled to work



Public

Education (% all people aged 16 and over)



Children in primary schools

293

More than similar towns per head of population

Commuter Flow Map

Coloured and grey lines/pins show the main and smaller commuter flows, respectively, between this town and the other towns in Scotland.

Commercial

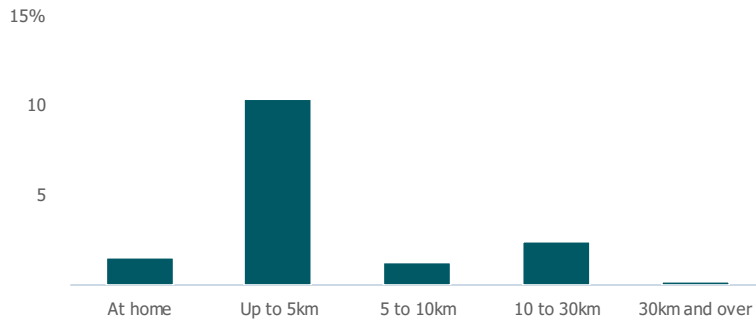
Number of people per shop

175

Less than similar towns per head of population

Social

Distance travelled to study



Number of residents per charity

270

Less than similar towns per head of population

Connectivity and environment assets

Average download speed (MBs)

65

More than similar towns per head of population

Download

Download all of the Old Kilpatrick data in PDF format.

[Download PDF \(https://usppreview.blob.core.windows.net/pdfs/Old%20Kilpatrick.pdf\)](https://usppreview.blob.core.windows.net/pdfs/Old%20Kilpatrick.pdf)



UNIVERSITY of STIRLING

