

# New Scone, Perth and Kinross

Population 4,886

New Scone is located in Perth and Kinross. The settlement was developed when in 1805 the residents of Old Scone were resettled from the grounds of Scone Palace. Perth airport is close by. The settlement acts as a suburb of Perth.

This type of medium-sized town is a suburban or commuter locality with a prevalence of higher income and private housing. A large proportion of the population are over 45, and many are retired. Many people own their home. There is also a high proportion of people in professional employment and a high proportion of residents are educated to HNC level or above. Many residents own two or more cars.

New Scone is an interdependent to dependent town.

Its most similar towns are [Bishopton](#), [Brightons](#), [Kilbarchan](#), and [Westhill \(Highland\)](#).

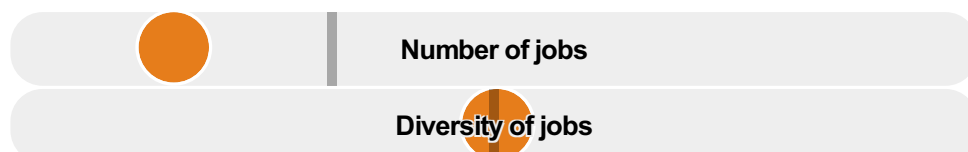
To gain more insight into New Scone, compare it to any of the other towns included in USP.

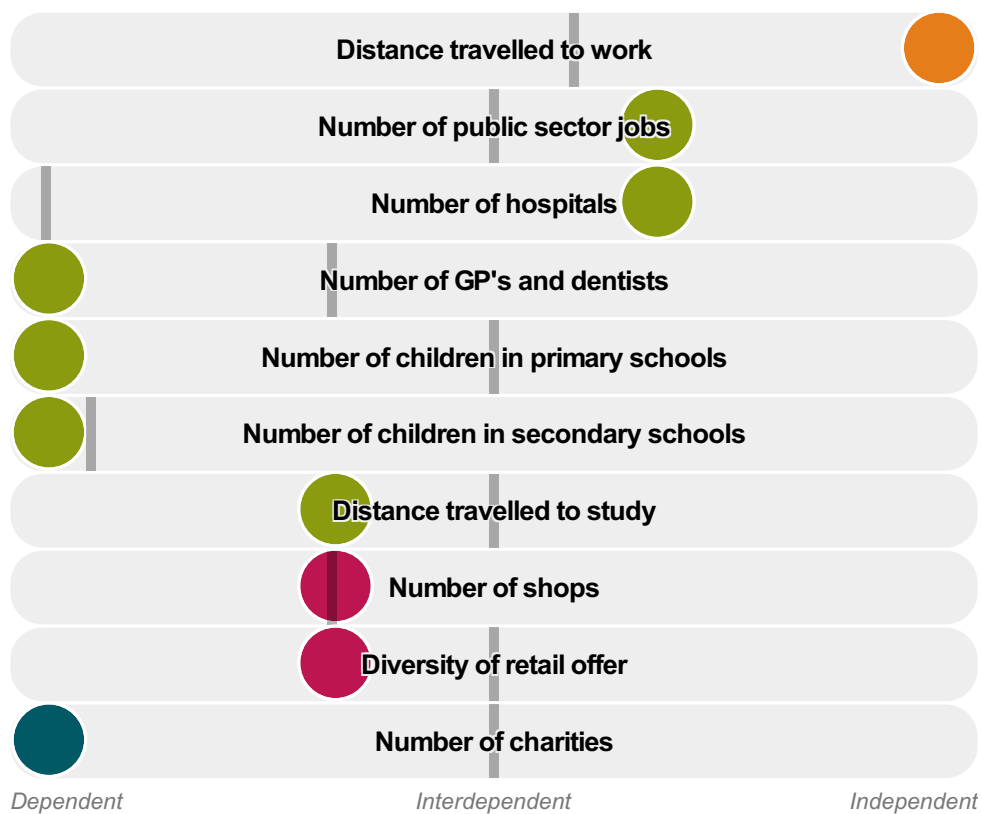
## Inter-relationships

*Dependent*

*Interdependent*

*Independent*





New Scone is an **interdependent to dependent** town.

Combining inter-relationships and typology, New Scone is grouped with 16 other towns. It has similarities to these towns in terms of the number of children in secondary schools, jobs, shops, and diversity of retail offer. It also has similarities in the diversity of jobs, and the distance travelled to study.

It differs in terms of the number of hospitals. It also differs in the distance travelled to work. New Scone differs most from its group in the number of charities, children in primary schools, and GP's and dentists.

- Employment
- Public
- Commercial
- Social
- ▬ Average for the category

## Change

### Population change 2001 to 2011

6%

Less than similar towns per head of population

## Population

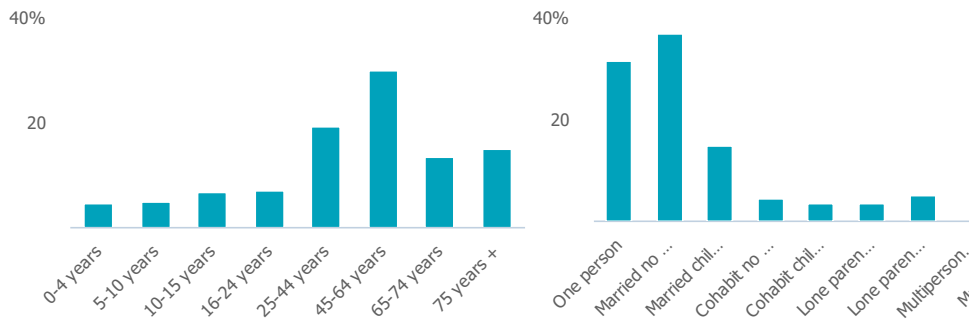
### Population 2011

5k

Less than similar towns

**Age**

**Household composition**



**Employment**

**Jobs**

500

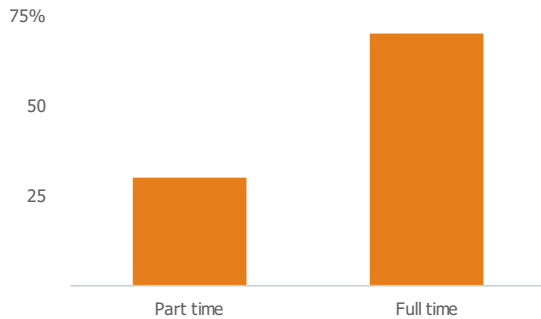
Less than similar towns per head of population

**Jobs change 2009 to 2014**

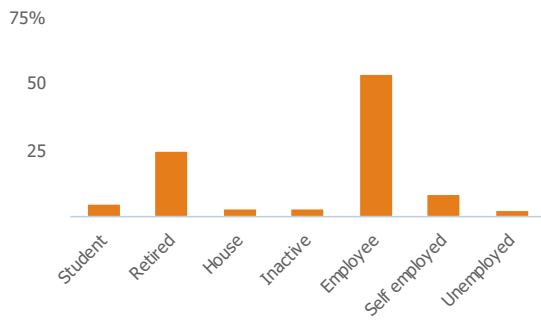
-7%

Less than similar towns per head of population

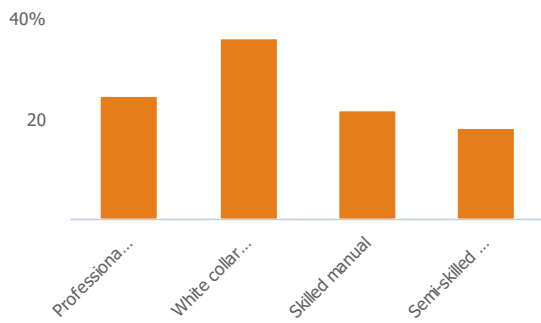
**Employment type(% working full time vs part time aged 16-74)**



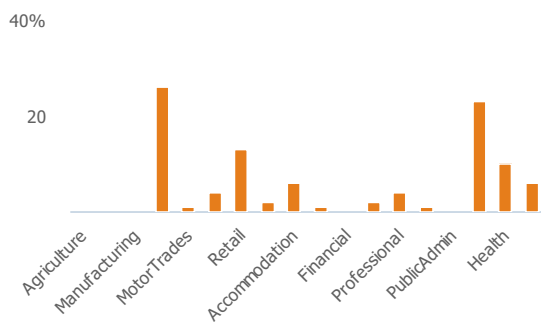
**Occupation (%aged 16-74)**



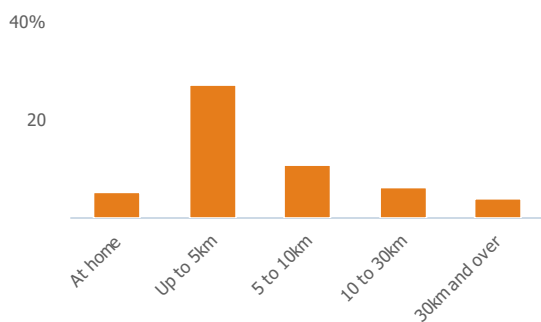
### Social Grade (% households aged 16-64)



### Sector Diversity

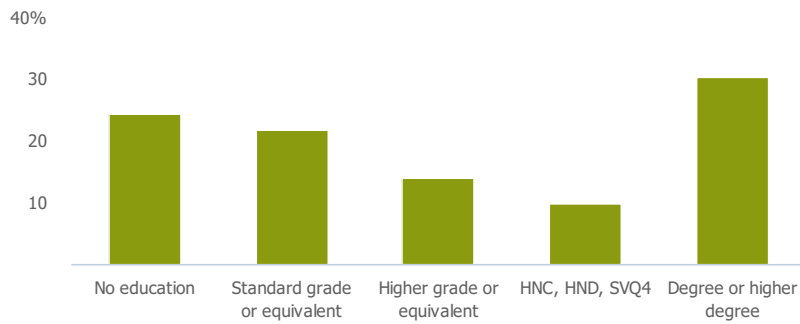


### Distance travelled to work



## Public

### Education (% all people aged 16 and over)



## Children in primary schools

0

Less than similar towns per head of population

## Commuter Flow Map

Coloured and grey lines/pins show the main and smaller commuter flows, respectively, between this town and the other towns in Scotland.

## Commercial

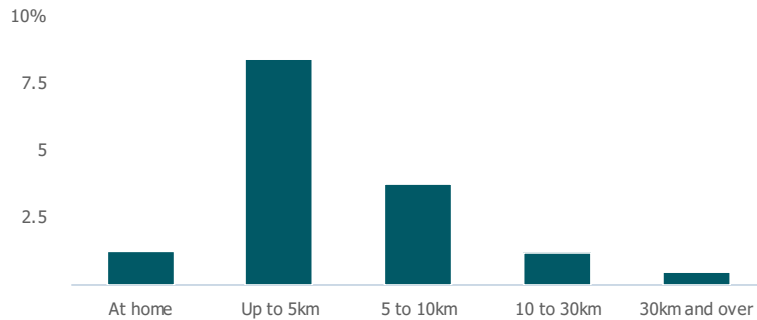
### Number of people per shop

181

More than similar towns per head of population

## Social

### Distance travelled to study



### Number of residents per charity

0

Less than similar towns per head of population

## Connectivity and environment assets

### Average download speed (MBs)

50

More than similar towns per head of population

## Download

Download all of the New Score data in PDF format.

[Download PDF \(https://uspreview.blob.core.windows.net/pdfs/New%20Score.pdf\)](https://uspreview.blob.core.windows.net/pdfs/New%20Score.pdf)