

# Milnathort, Perth and Kinross

Population 1,890

Milnathort is located in Perth and Kinross. Historically it was a market town. It was an important crossroads at the meeting point of east west and north south turnpike roads. Today it is bypassed by the motorway and remains an attractive residential settlement with commuters going north to Perth and south to Edinburgh.

This type of small town is a suburban or commuter locality with a prevalence of higher income and private housing. A large proportion of the population are over 45, and many are retired. Many people own their home. There is also a high proportion of people in professional employment and a high proportion of residents are educated to HNC level or above. Many residents own two or more cars.

Milnathort is an interdependent to dependent town.

Its most similar towns are [Luncarty](#), [Lauder](#), [Menstrie](#), and [Fenwick](#).

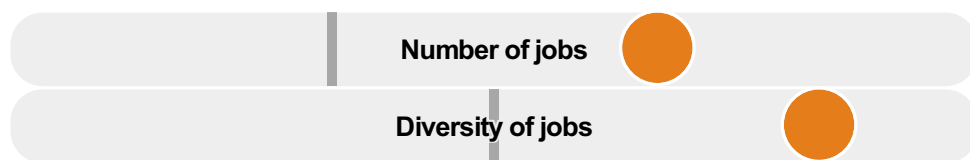
To gain more insight into Milnathort, compare it to any of the other towns included in USP.

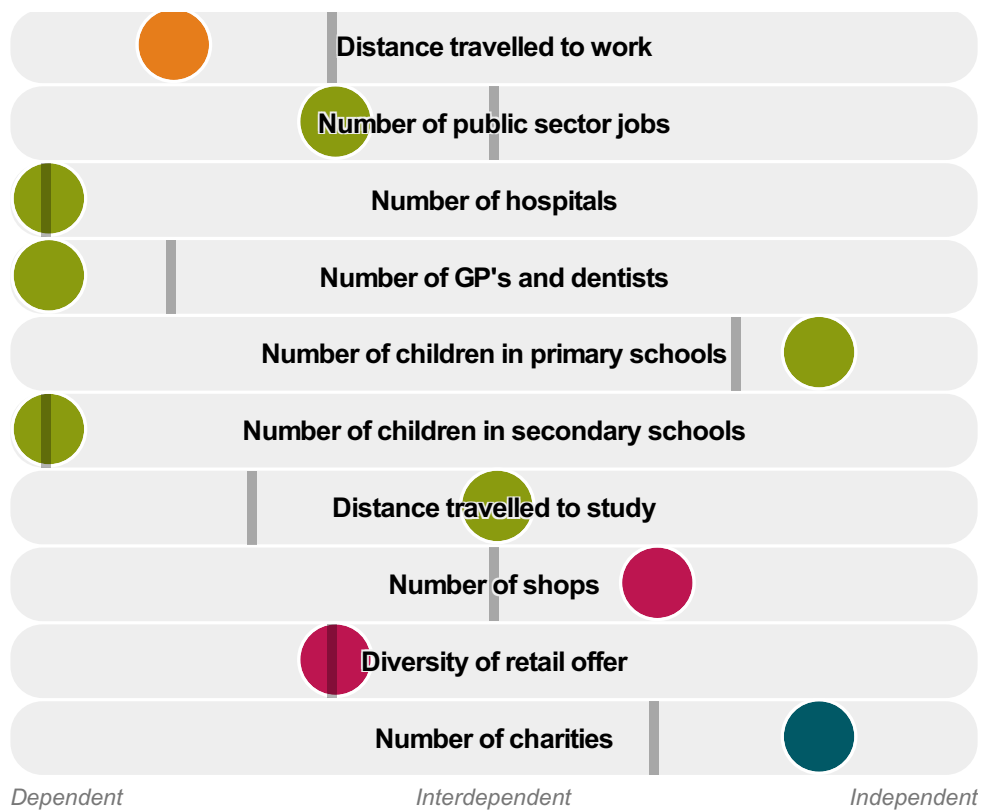
## Inter-relationships

*Dependent*

*Interdependent*

*Independent*





Milnathort is an **interdependent to dependent** town.

Combining inter-relationships and typology, Milnathort is grouped with 33 other towns. It has similarities to these towns in terms of the number of charities, hospitals, children in primary schools, children in secondary schools, and diversity of retail offer. It also has similarities in the distance travelled to work.

It differs in terms of the diversity of jobs. Milnathort differs most from its group in the number of jobs.

- Employment
- Public
- Commercial
- Social
- Average for the category

## Change

### Population change 2001 to 2011

9%

Less than similar towns per head of population

## Population

### Population 2011

2k



## Employment

### Jobs

584

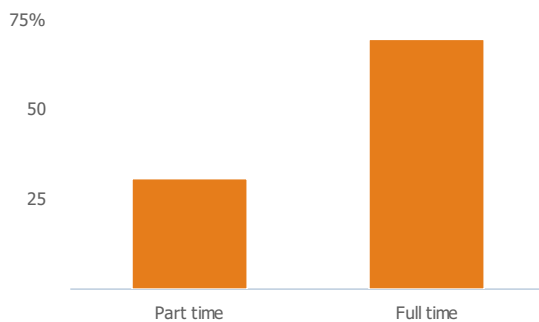
More than similar towns per head of population

### Jobs change 2009 to 2014

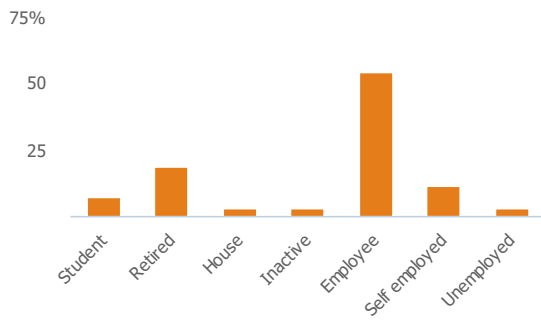
3%

More than similar towns per head of population

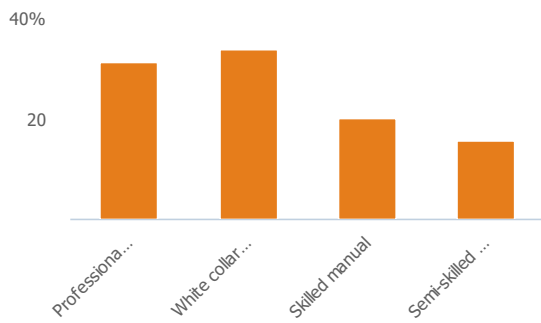
### Employment type(% working full time vs part time aged 16-74)



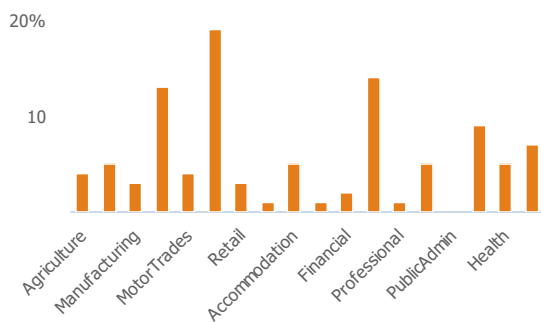
### Occupation (%aged 16-74)



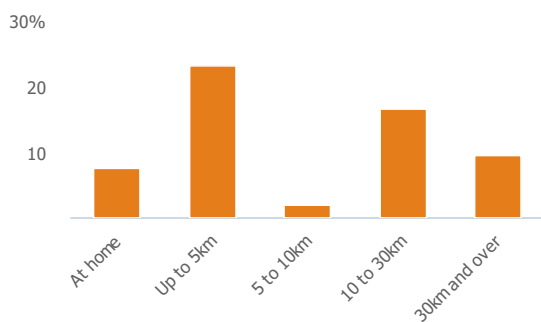
### Social Grade (% households aged 16-64)



### Sector Diversity

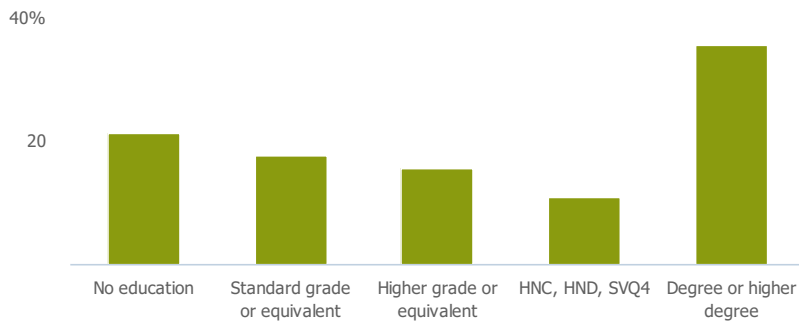


### Distance travelled to work



## Public

### Education (% all people aged 16 and over)



## Children in primary schools

207

Less than similar towns per head of population

## Commuter Flow Map

Coloured and grey lines/pins show the main and smaller commuter flows, respectively, between this town and the other towns in Scotland.

## Commercial

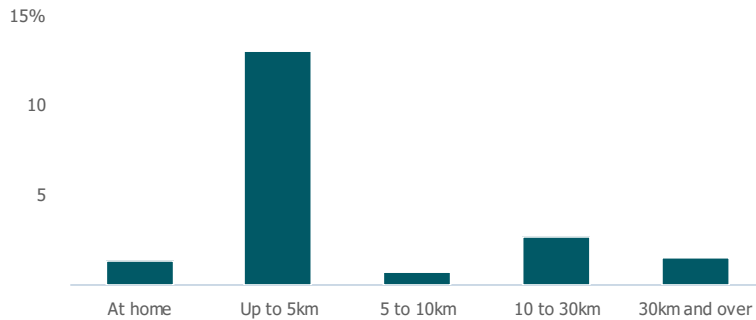
### Number of people per shop

105

More than similar towns per head of population

## Social

### Distance travelled to study



### Number of residents per charity

135

Less than similar towns per head of population

## Connectivity and environment assets

### Average download speed (MBs)

21

Less than similar towns per head of population

## Download

Download all of the Milnathort data in PDF format.

[Download PDF \(https://usppreview.blob.core.windows.net/pdfs/Milnathort.pdf\)](https://usppreview.blob.core.windows.net/pdfs/Milnathort.pdf)



UNIVERSITY of STIRLING

