

Loanhead, Midlothian

Population 6,294

Loanhead is in Midlothian. It is a former shale, coal mining and paper making settlement. Burghlee Colliery closed in the mid 1960s but was redeveloped as Bilston Glen, a super colliery until 1989. Ramsay Colliery also operated. A large industrial estate provides local employment today.

This type of medium-sized town is extremely mixed in terms of demographics. There is a particularly wide range of people, housing and activities. The number of older couples with no children are higher than average. There is a mix of professional and non-professional jobs, and part-time and self-employment are both important for a significant proportion of residents. Socioeconomic status is higher than in other kinds of town and there is a mix of professionals and nonprofessionals, those with higher and lower educational attainment.

Loanhead is an interdependent town.

Its most similar towns are [Galston](#), [Bonnybridge](#), [Stewarton](#), and [Bannockburn](#).

To gain more insight into Loanhead, compare it to any of the other towns included in USP.

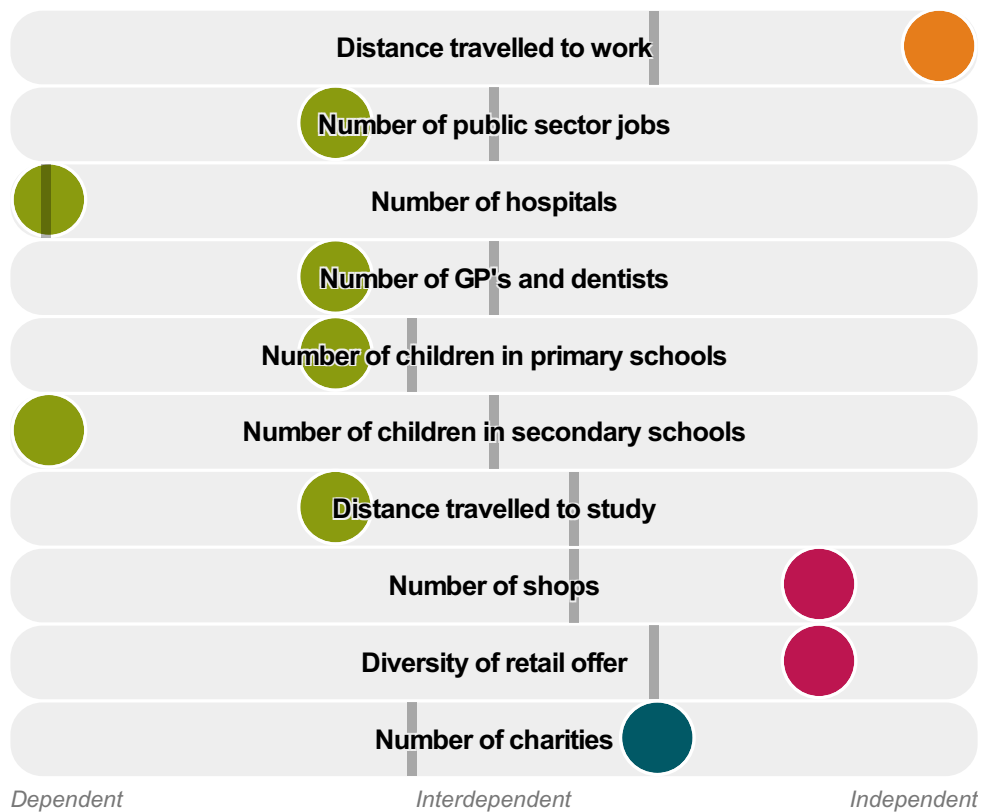
Inter-relationships

Dependent

Interdependent

Independent





Loanhead is an **interdependent** town.

Combining inter-relationships and typology, Loanhead is grouped with 13 other towns. It has similarities to these towns in terms of the number of hospitals, children in primary schools, and public sector jobs.

It differs in terms of the number of jobs. It also differs in the diversity of jobs, the distance travelled to work, and the distance travelled to study. Loanhead differs most from its group in the number of children in secondary schools.

- Employment
- Public
- Commercial
- Social
- ▬ Average for the category

Change

Population change 2001 to 2011

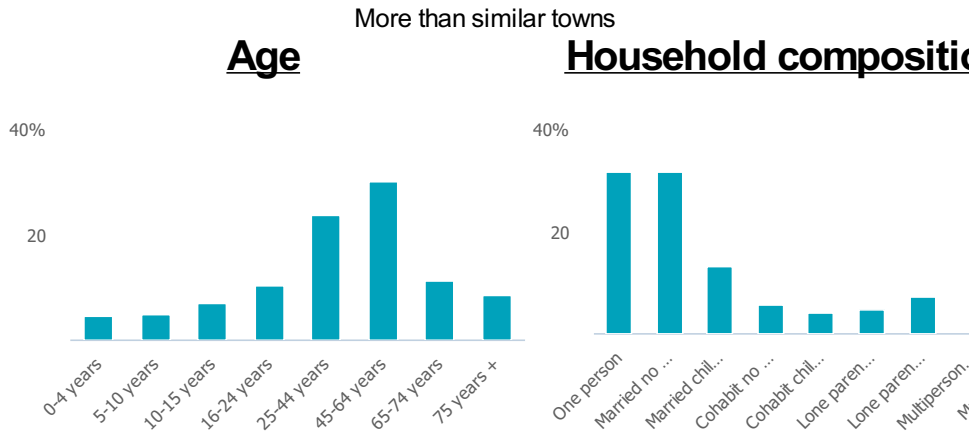
0%

Less than similar towns per head of population

Population

Population 2011

6k



Employment

Jobs

7k

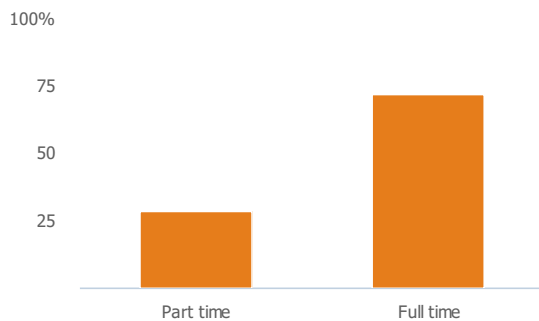
More than similar towns per head of population

Jobs change 2009 to 2014

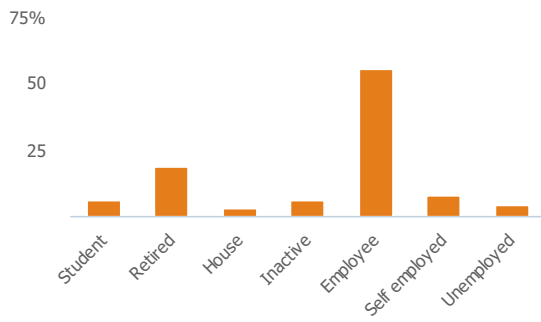
7%

More than similar towns per head of population

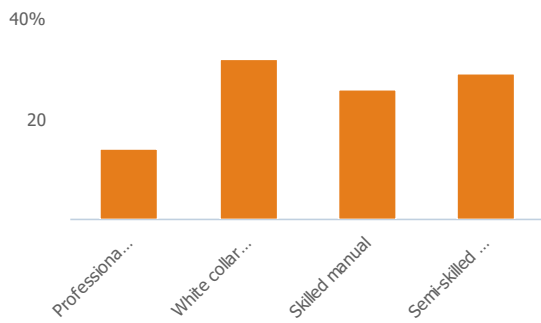
Employment type(% working full time vs part time aged 16-74)



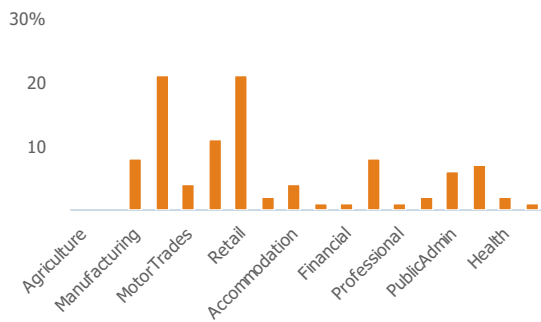
Occupation (% aged 16-74)



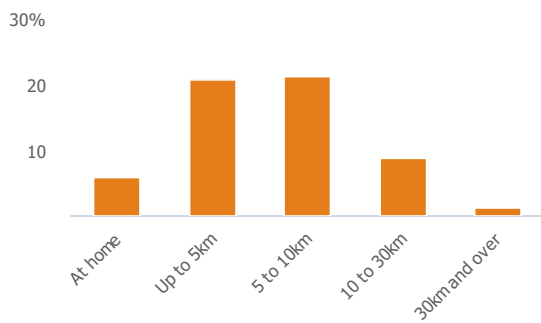
Social Grade (% households aged 16-64)



Sector Diversity

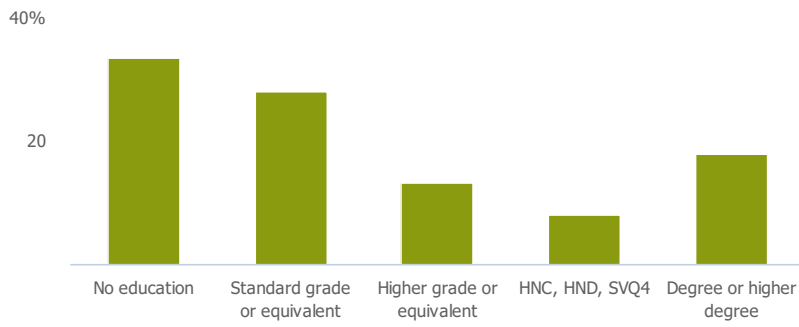


Distance travelled to work



Public

Education (% all people aged 16 and over)



Children in primary schools

467

Less than similar towns per head of population

Commuter Flow Map

Coloured and grey lines/pins show the main and smaller commuter flows, respectively, between this town and the other towns in Scotland.

Commercial

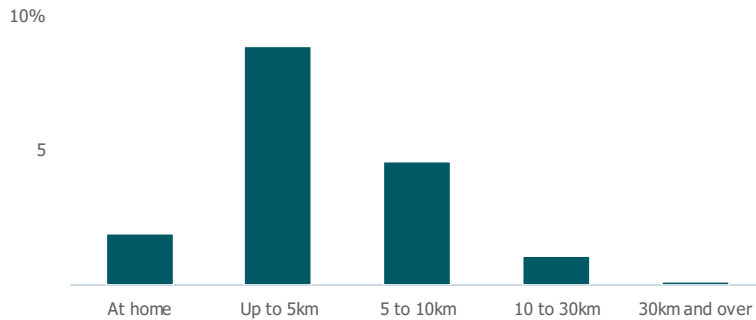
Number of people per shop

72

More than similar towns per head of population

Social

Distance travelled to study



Number of residents per charity

262

Less than similar towns per head of population

Connectivity and environment assets

Average download speed (MBs)

11

Less than similar towns per head of population

Download

Download all of the Loanhead data in PDF format.

[Download PDF \(https://usppreview.blob.core.windows.net/pdfs/Loanhead.pdf\)](https://usppreview.blob.core.windows.net/pdfs/Loanhead.pdf)

