

Lenzie, East Dunbartonshire

Population 8,415

Lenzie is located in East Dunbartonshire. it was the location of a mental hospital but grew as a commuter suburb following the arrival of the railway.

This type of medium-sized town is a suburban or commuter locality with a prevalence of higher income and private housing. A large proportion of the population are over 45, and many are retired. Many people own their home. There is also a high proportion of people in professional employment and a high proportion of residents are educated to HNC level or above. Many residents own two or more cars.

Lenzie is an interdependent town.

Its most similar towns are [Kirkliston](#), [Bridge of Allan](#), [Portlethen](#), and [Bothwell](#).

To gain more insight into Lenzie, compare it to any of the other towns included in USP.

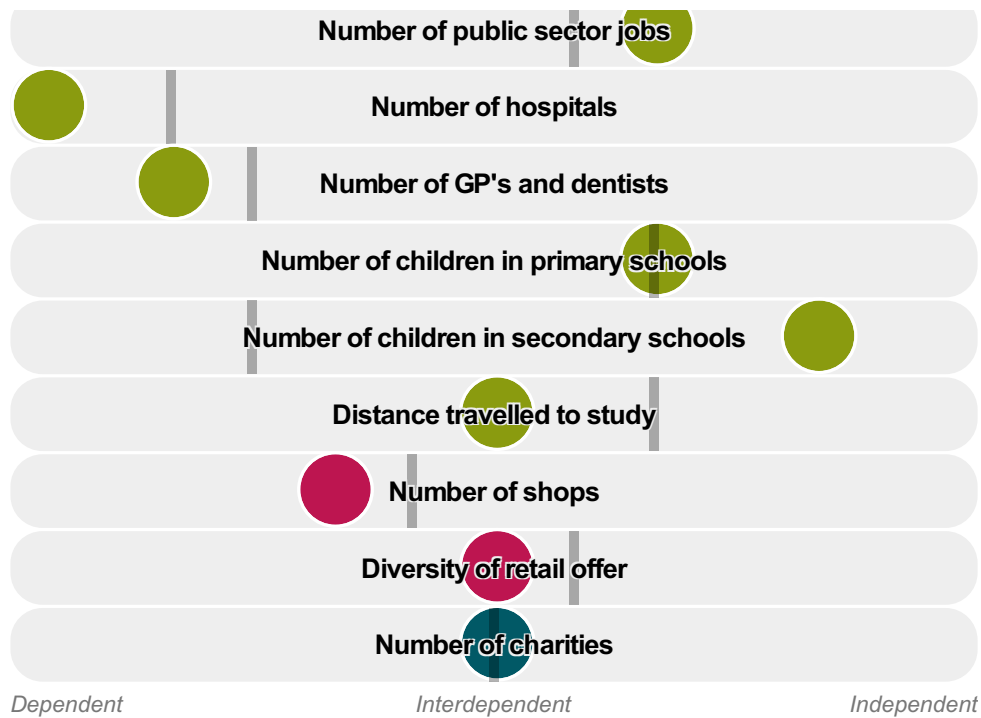
Inter-relationships

Dependent

Interdependent

Independent





Lenzie is an **interdependent** town.

Combining inter-relationships and typology, Lenzie is grouped with 7 other towns. It has similarities to these towns in terms of the number of charities, children in primary schools, jobs, public sector jobs, shops, GP's and dentists, and diversity of retail offer. It also has similarities in the distance travelled to work.

It differs in terms of the diversity of jobs. Lenzie differs most from its group in the number of children in secondary schools.

- Employment
- Public
- Commercial
- Social
- ▬ Average for the category

Change

Population change 2001 to 2011

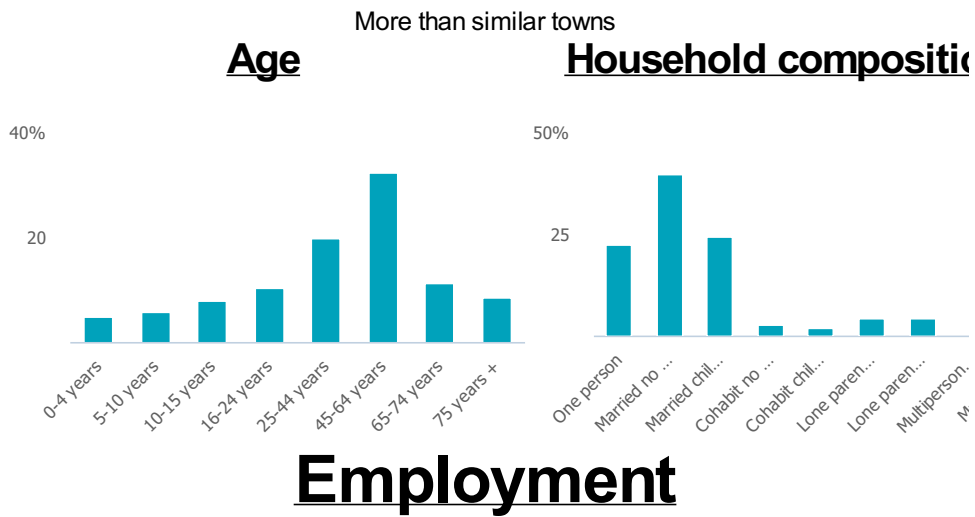
-5%

Less than similar towns per head of population

Population

Population 2011

8k



Jobs

3k

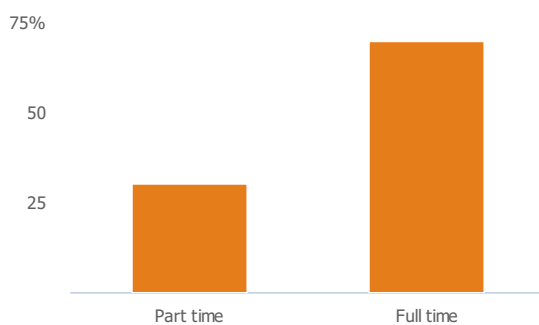
Less than similar towns per head of population

Jobs change 2009 to 2014

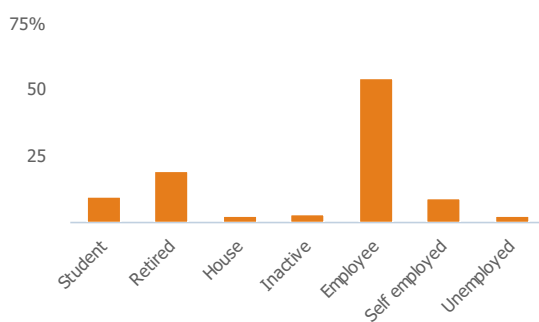
9%

Less than similar towns per head of population

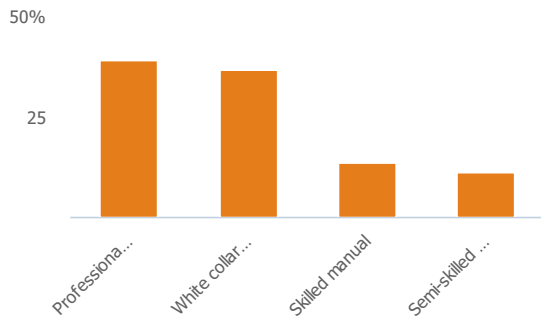
Employment type(% working full time vs part time aged 16-74)



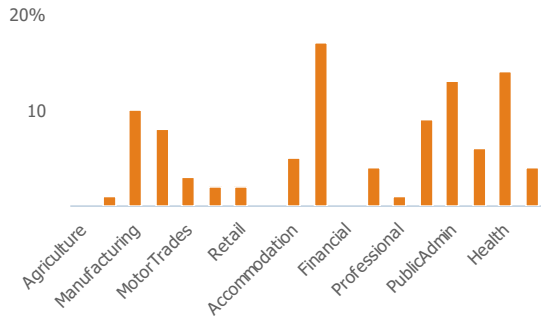
Occupation (% aged 16-74)



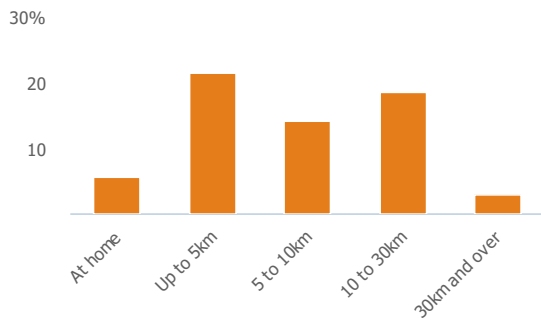
Social Grade (% households aged 16-64)



Sector Diversity

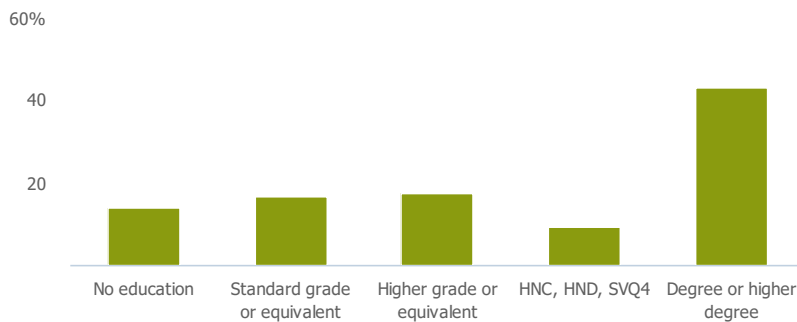


Distance travelled to work



Public

Education (% all people aged 16 and over)



Children in primary schools

Less than similar towns per head of population

Commuter Flow Map

Coloured and grey lines/pins show the main and smaller commuter flows, respectively, between this town and the other towns in Scotland.

Commercial

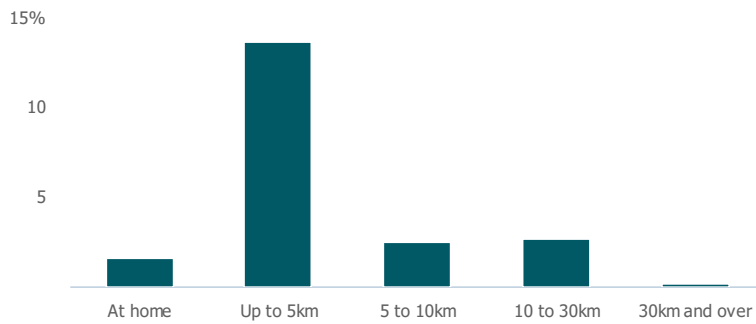
Number of people per shop

205

Less than similar towns per head of population

Social

Distance travelled to study



Number of residents per charity

281

Less than similar towns per head of population

Connectivity and environment assets

Average download speed (MBs)

62

More than similar towns per head of population

Download

Download all of the Lenzie data in PDF format.

[Download PDF \(https://usppreview.blob.core.windows.net/pdfs/Lenzie.pdf\)](https://usppreview.blob.core.windows.net/pdfs/Lenzie.pdf)

