

Larbert, Falkirk

Population 9,143

Larbert in Falkirk has a long history dating back to Roman times. Its growth is a result of the development of boiler making and casting and in particular the Carron Ironworks. Heavy industry has declined and the town has many commuters. There are several industrial estates with a range of manufacturing companies and service industries.

This type of medium-sized town is a suburban or commuter locality with a prevalence of higher income and private housing. A large proportion of the population are over 45, and many are retired. Many people own their home. There is also a high proportion of people in professional employment and a high proportion of residents are educated to HNC level or above. Many residents own two or more cars.

Larbert is an interdependent town.

Its most similar towns are [Queensferry](#), [Bothwell](#), [Kirkliston](#), and [Lenzie](#).

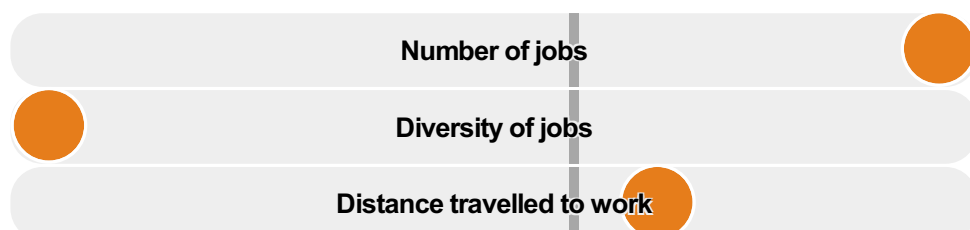
To gain more insight into Larbert, compare it to any of the other towns included in USP.

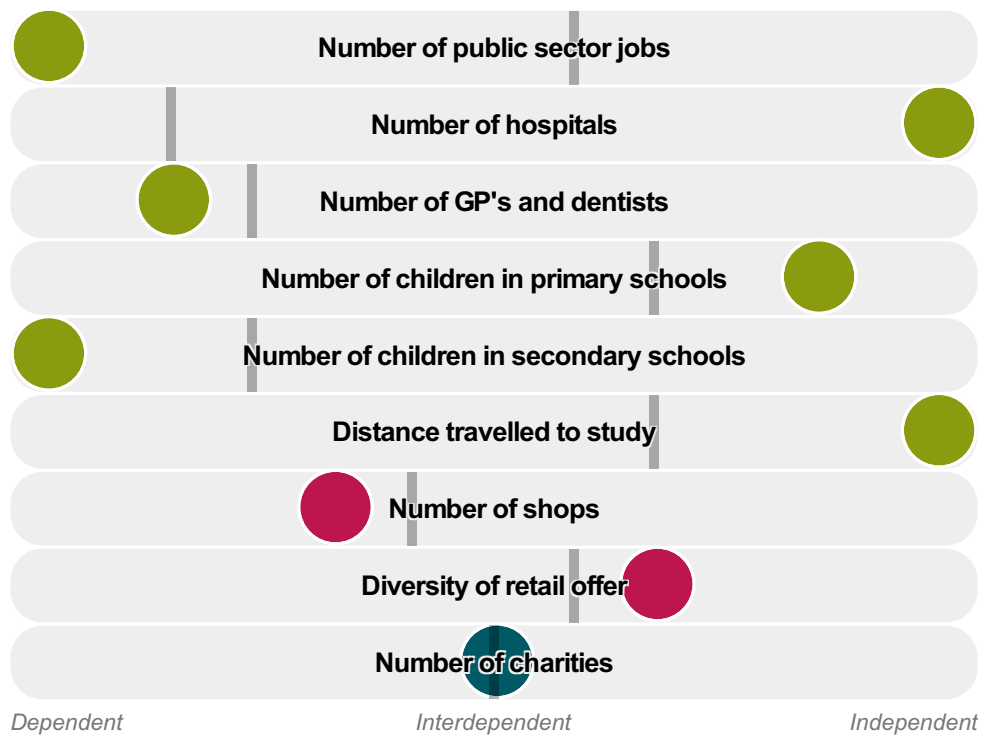
Inter-relationships

Dependent

Interdependent

Independent





Larbert is an **interdependent** town.

Combining inter-relationships and typology, Larbert is grouped with 7 other towns. It has similarities to these towns in terms of the number of charities, children in primary schools, shops, GP's and dentists, and diversity of retail offer. It also has similarities in the distance travelled to work.

It differs in terms of the number of hospitals, and jobs. It also differs in the distance travelled to study. Larbert differs most from its group in the number of children in secondary schools, and public sector jobs; and the diversity of jobs.

- Employment
- Public
- Commercial
- Social
- Average for the category

Change

Population change 2001 to 2011

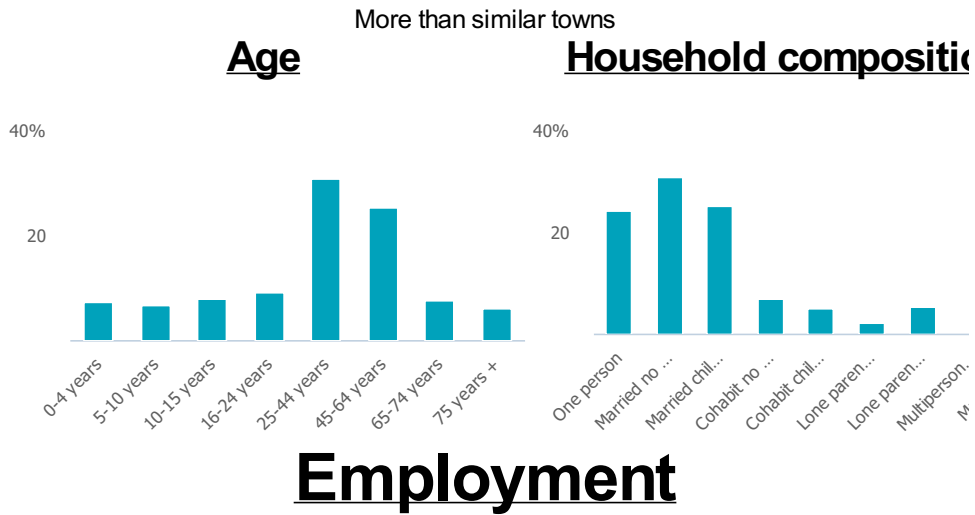
51%

More than similar towns per head of population

Population

Population 2011

OL



Jobs

10k

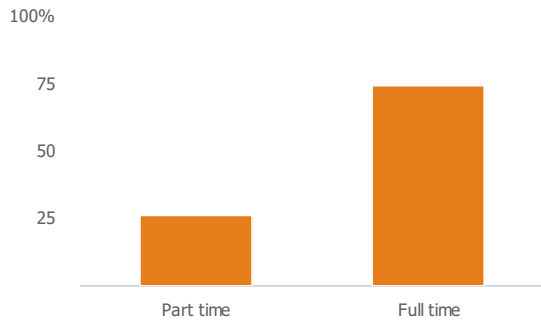
More than similar towns per head of population

Jobs change 2009 to 2014

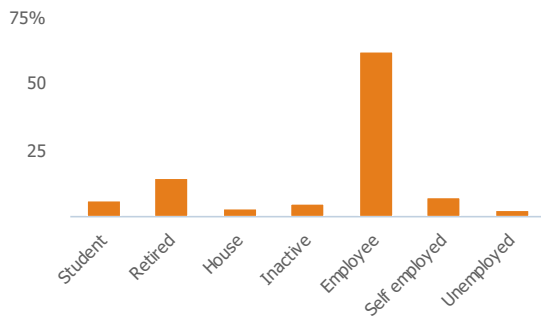
64%

More than similar towns per head of population

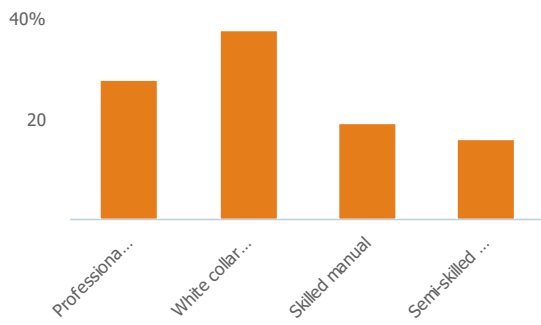
Employment type(% working full time vs part time aged 16-74)



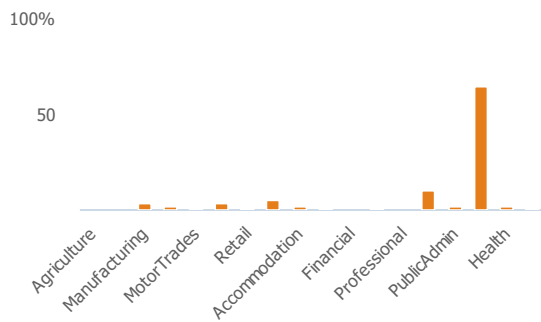
Occupation (% aged 16-74)



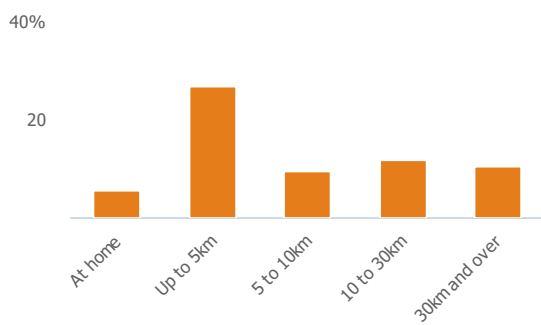
Social Grade (% households aged 16-64)



Sector Diversity

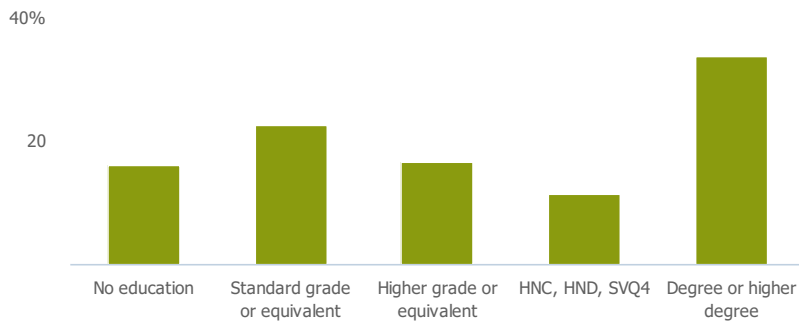


Distance travelled to work



Public

Education (% all people aged 16 and over)



Children in primary schools

1k

More than similar towns per head of population

Commuter Flow Map

Coloured and grey lines/pins show the main and smaller commuter flows, respectively, between this town and the other towns in Scotland.

Commercial

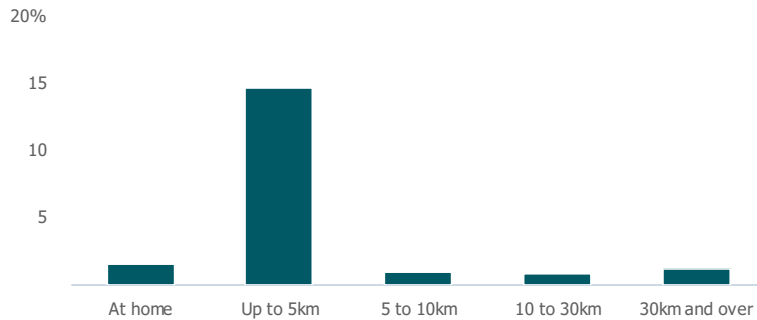
Number of people per shop

183

Less than similar towns per head of population

Social

Distance travelled to study



Number of residents per charity

315

Less than similar towns per head of population

Connectivity and environment assets

Average download speed (MBs)

46

Less than similar towns per head of population

Download

Download all of the Larbert data in PDF format.

[Download PDF \(https://usppreview.blob.core.windows.net/pdfs/Larbert.pdf\)](https://usppreview.blob.core.windows.net/pdfs/Larbert.pdf)

