

Kinross, Perth and Kinross

Population 4,891

Kinross is located by Loch Leven in Perth and Kinross. It was the former county town for Kinross-shire. It was in historic times a resting point on the route from Edinburgh to Perth and royalty stopped there. It still has many inns and hostellries. In the 17th and 18th century it was known for cutlery making. Today there is a cashmere factory and light industries.

This type of medium-sized town is a suburban or commuter locality with a prevalence of higher income and private housing. A large proportion of the population are over 45, and many are retired. Many people own their home. There is also a high proportion of people in professional employment and a high proportion of residents are educated to HNC level or above. Many residents own two or more cars.

Kinross is an interdependent to independent town.

Its most similar towns are [Strathaven](#), [Kilmacolm](#), [Uddingston](#), and [Oldmeldrum](#).

To gain more insight into Kinross, compare it to any of the other towns included in USP.

Inter-relationships

Dependent

Interdependent

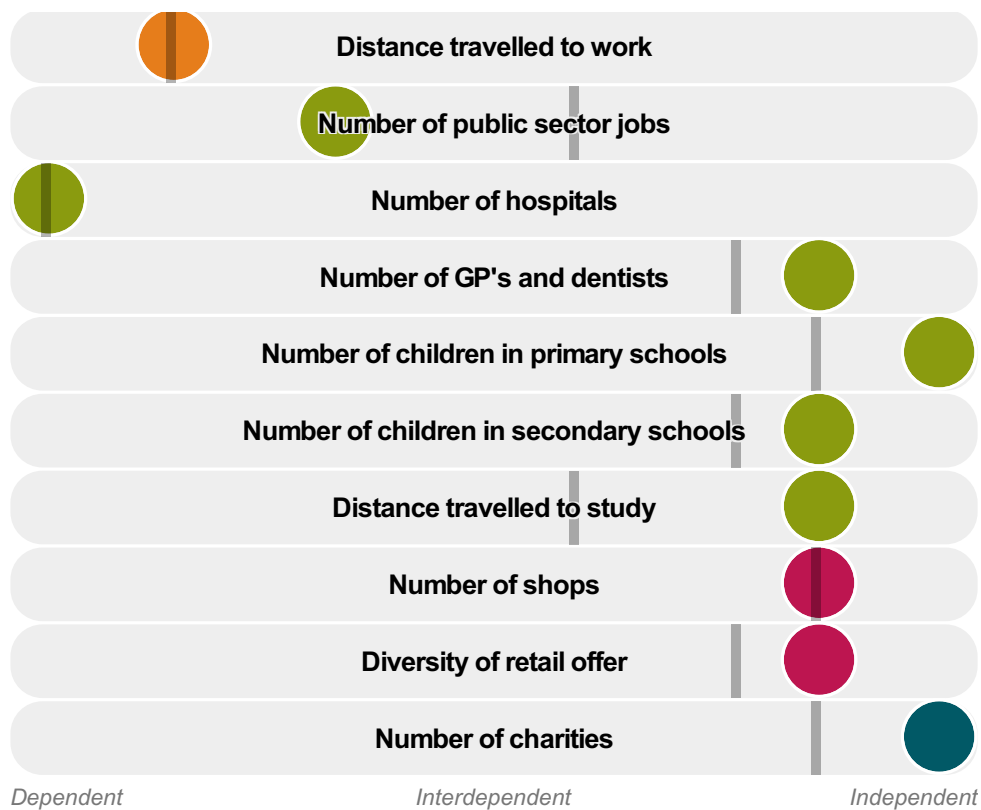
Independent

Number of jobs



Diversity of jobs





Kinross is an **interdependent to independent** town.

Combining inter-relationships and typology, Kinross is grouped with 4 other towns. It has similarities to these towns in terms of the number of charities, hospitals, children in secondary schools, jobs, shops, GP's and dentists, and diversity of retail offer. It also has similarities in the diversity of jobs, and the distance travelled to work.

Kinross differs most from its group in the distance travelled to study.

- Employment
- Public
- Commercial
- Social
- Average for the category

Change

Population change 2001 to 2011

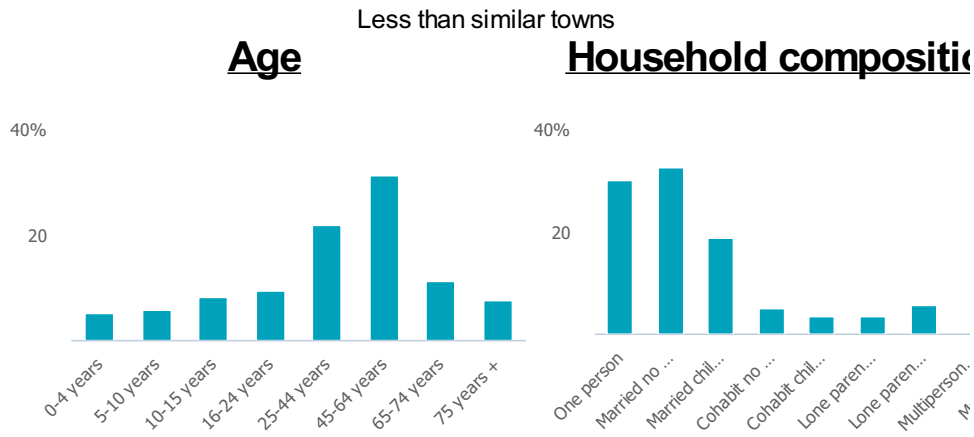
4%

Less than similar towns per head of population

Population

Population 2011

5K



Employment

Jobs

2k

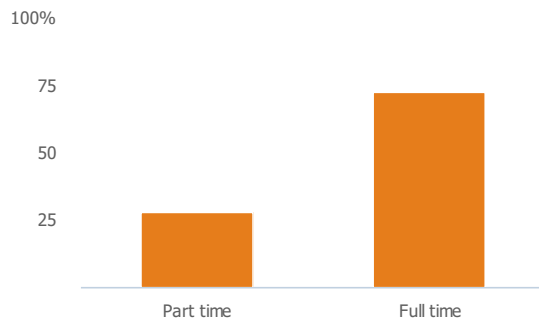
Less than similar towns per head of population

Jobs change 2009 to 2014

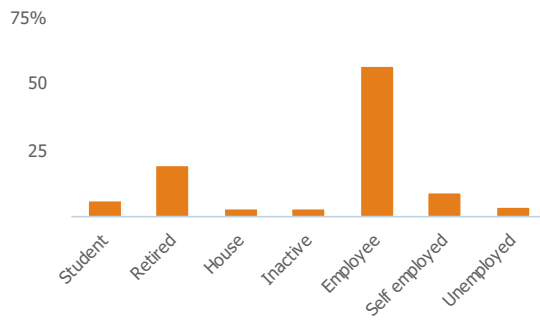
-30%

Less than similar towns per head of population

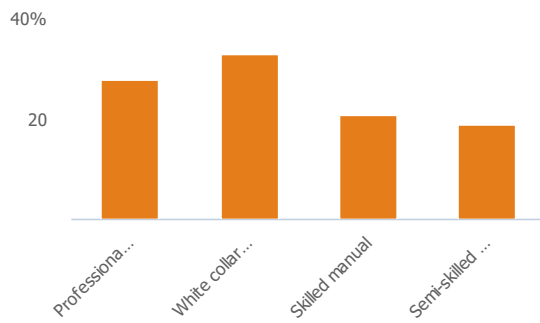
Employment type(% working full time vs part time aged 16-74)



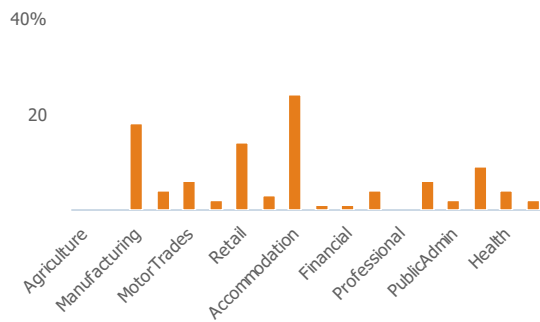
Occupation (%aged 16-74)



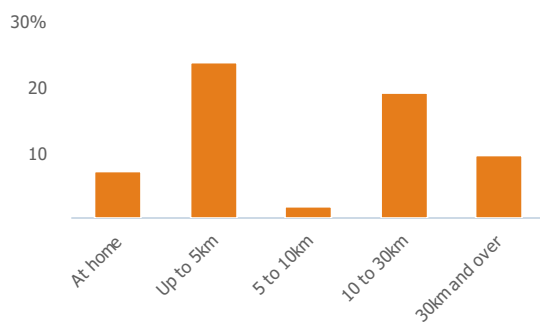
Social Grade (% households aged 16-64)



Sector Diversity

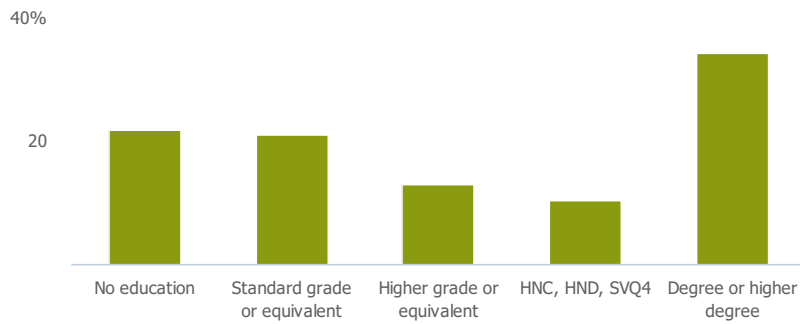


Distance travelled to work



Public

Education (% all people aged 16 and over)



Children in primary schools

707

More than similar towns per head of population

Commuter Flow Map

Coloured and grey lines/pins show the main and smaller commuter flows, respectively, between this town and the other towns in Scotland.

Commercial

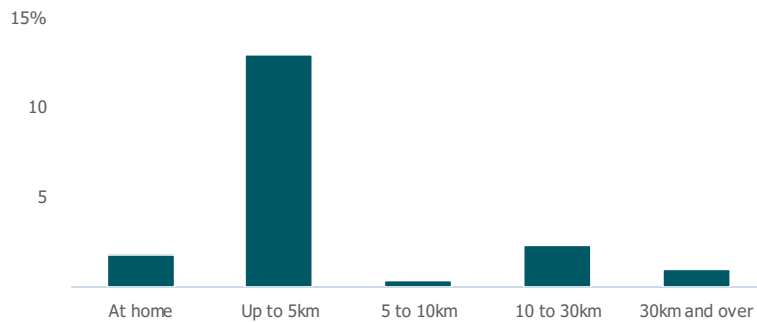
Number of people per shop

69

More than similar towns per head of population

Social

Distance travelled to study



Number of residents per charity

104

Less than similar towns per head of population

Connectivity and environment assets

Average download speed (MBs)

20

Less than similar towns per head of population

Download

Download all of the Kinross data in PDF format.

[Download PDF \(https://usppreview.blob.core.windows.net/pdfs/Kinross.pdf\)](https://usppreview.blob.core.windows.net/pdfs/Kinross.pdf)