

# Kilbirnie, North Ayrshire

Population 7,642

Kilbirnie is in North Ayrshire. Traditional industries included rope making and the manufacture of fishing nets. In 1841 the Glengarnock Steelworks opened. It closed in 1985 with a loss of many local jobs. With few local jobs the town is now a commuter settlement. W& J Knox Threadmill, a very long established business (which preceded the steelworks) continues to operate making specialist nets although the carpet yarn business was sold to an Italian company in 2014.

Social and council housing are the norm in this type of medium-sized town. Manufacturing and construction are the dominant forms of employment. Health and social work services are particularly active. There is a higher level of unemployment. Educational attainment is low. Car ownership is low, meaning that many residents in these towns are reliant on public transport.

Kilbirnie is an interdependent to dependent town.

Its most similar towns are [Hurford and Crookedholm](#), [Newmains](#), [Cardenden and Dundonald](#), and [Fauldhouse](#).

To gain more insight into Kilbirnie, compare it to any of the other towns included in USP.

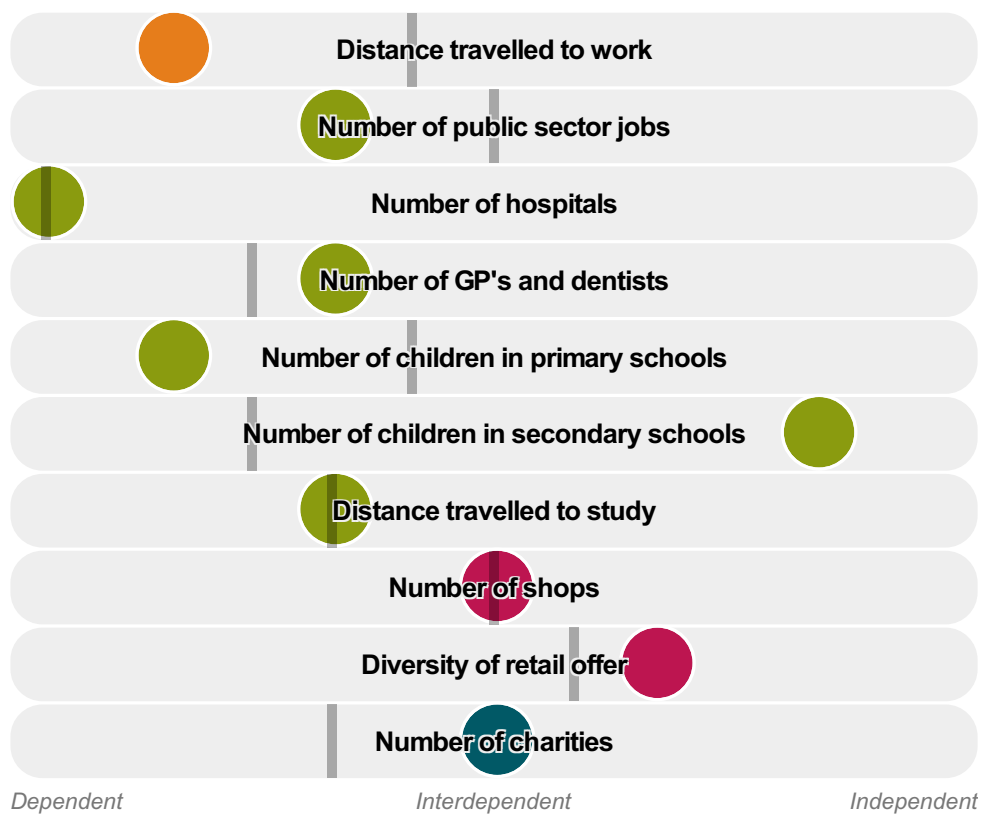
## Inter-relationships

*Dependent*

*Interdependent*

*Independent*





Kilbirnie is an **interdependent to dependent** town.

Combining inter-relationships and typology, Kilbirnie is grouped with 10 other towns. It has similarities to these towns in terms of the number of hospitals, shops, GP's and dentists, and diversity of retail offer. It also has similarities in the diversity of jobs, and the distance travelled to study.

It differs in terms of the number of children in secondary schools. Kilbirnie differs most from its group in the number of children in primary schools; and the distance travelled to work.

- Employment
- Public
- Commercial
- Social
- Average for the category

## Change

### Population change 2001 to 2011

4%

Less than similar towns per head of population

## Population

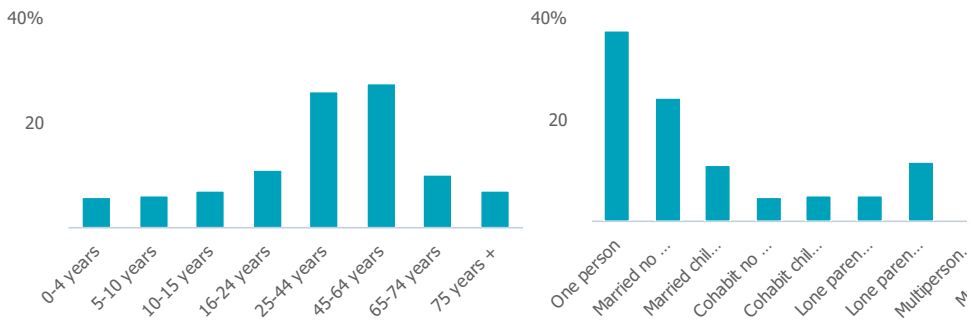
### Population 2011

8k

More than similar towns

**Age**

**Household composition**



**Employment**

**Jobs**

2k

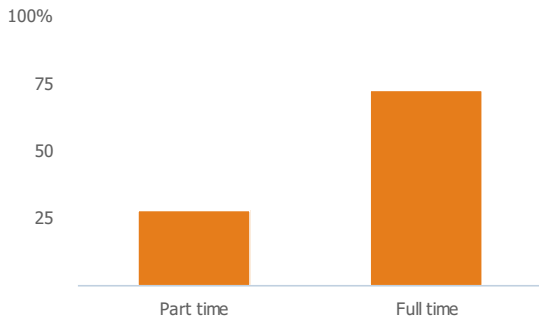
More than similar towns per head of population

**Jobs change 2009 to 2014**

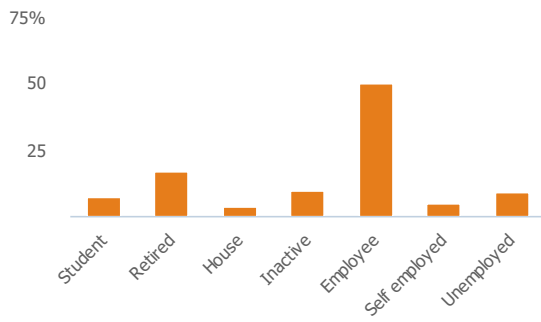
-4%

More than similar towns per head of population

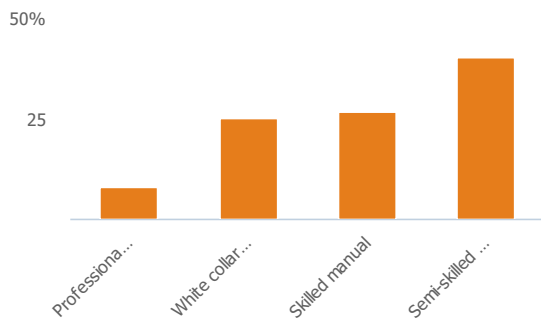
**Employment type(% working full time vs part time aged 16-74)**



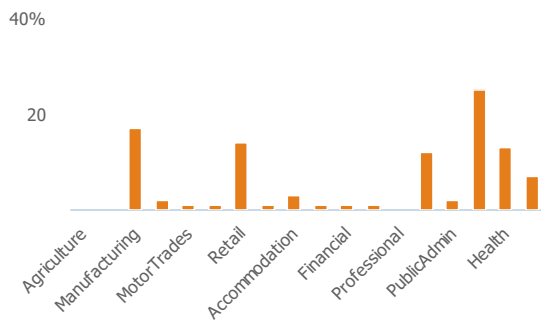
**Occupation (%aged 16-74)**



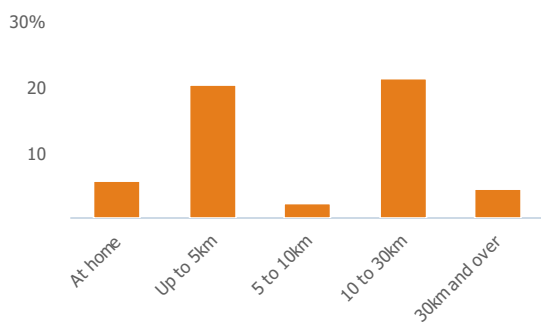
### Social Grade (% households aged 16-64)



### Sector Diversity

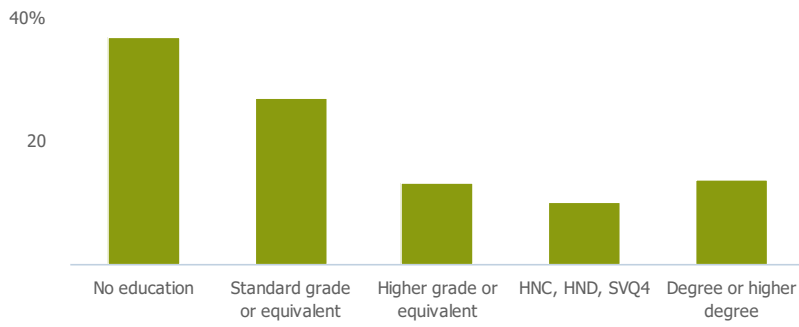


### Distance travelled to work



## Public

### Education (% all people aged 16 and over)



## Children in primary schools

398

Less than similar towns per head of population

## Commuter Flow Map

Coloured and grey lines/pins show the main and smaller commuter flows, respectively, between this town and the other towns in Scotland.

## Commercial

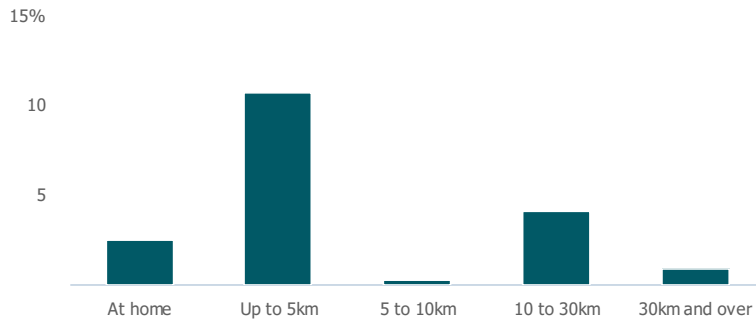
Number of people per shop

134

More than similar towns per head of population

## Social

### Distance travelled to study



### Number of residents per charity

364

Less than similar towns per head of population

## Connectivity and environment assets

### Average download speed (MBs)

18

Less than similar towns per head of population

## Download

Download all of the Kilbirnie data in PDF format.

[Download PDF \(https://usppreview.blob.core.windows.net/pdfs/Kilbirnie.pdf\)](https://usppreview.blob.core.windows.net/pdfs/Kilbirnie.pdf)

