

# Hurlford and Crookedholm, East Ayrshire

Population 4,846

Hurlford and Crookedholm in East Ayrshire developed after coal was found. Fireclay and ironstone were also worked and iron and steel produced. Today it is a residential settlement with easy access to Kilmarnock.

Social and council housing are the norm in this type of medium-sized town. Manufacturing and construction are the dominant forms of employment. Health and social work services are particularly active. There is a higher level of unemployment. Educational attainment is low. Car ownership is low, meaning that many residents in these towns are reliant on public transport.

Hurlford and Crookedholm is an interdependent to dependent town.

Its most similar towns are [Newmains](#), [Cardenden and Dundonald](#), [Kilbriemie](#), and [Fauldhouse](#).

To gain more insight into Hurlford and Crookedholm, compare it to any of the other towns included in USP.

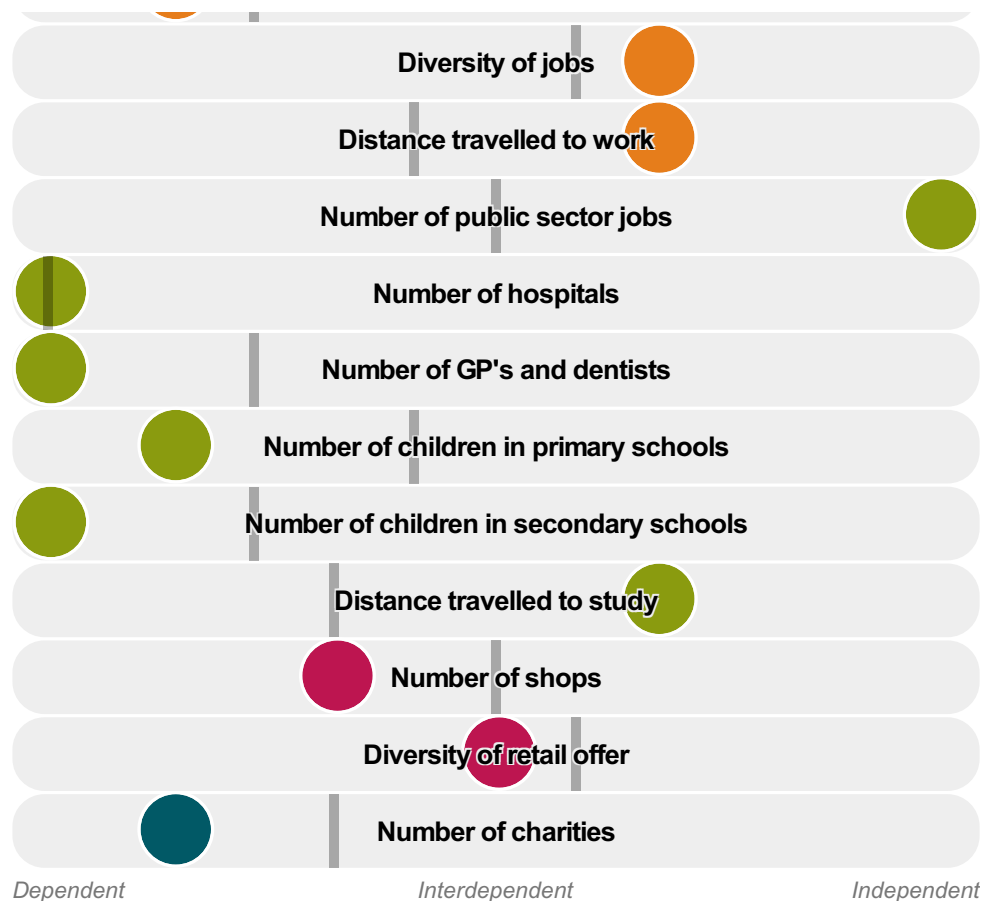
## Inter-relationships

*Dependent*

*Interdependent*

*Independent*





Hurlford and Crookedholm is an **interdependent to dependent** town.

Combining inter-relationships and typology, Hurlford and Crookedholm is grouped with 10 other towns. It has similarities to these towns in terms of the number of charities, hospitals, jobs, and diversity of retail offer. It also has similarities in the diversity of jobs.

It differs in terms of the number of children in primary schools, and public sector jobs. It also differs in the distance travelled to study. Hurlford and Crookedholm differs most from its group in the number of GP's and dentists.

- Employment
- Public
- Commercial
- Social
- Average for the category

## Change

### Population change 2001 to 2011

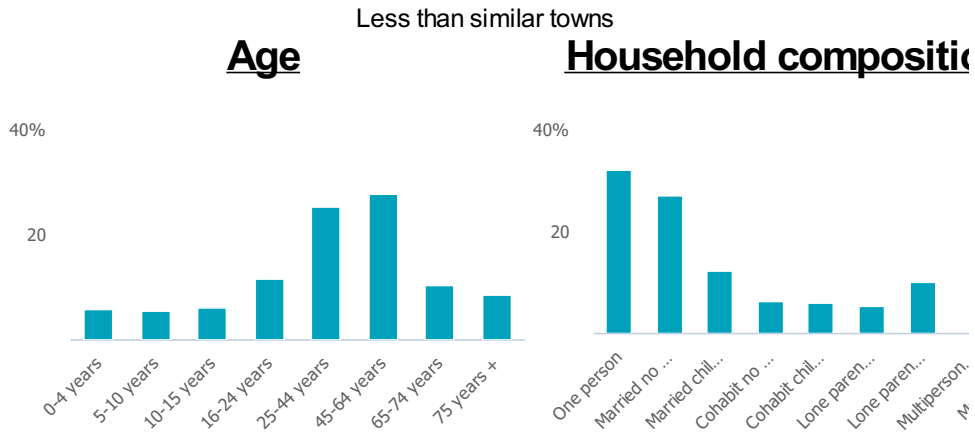
-2%

Less than similar towns per head of population

## Population

# Population 2011

5k



## Employment

### Jobs

579

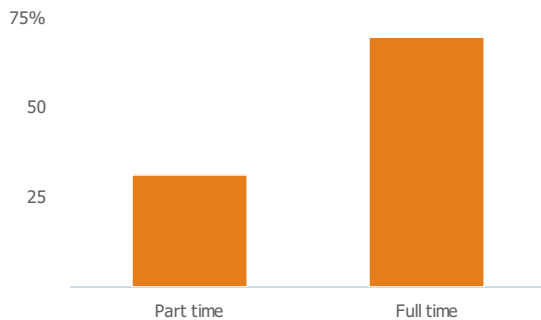
Less than similar towns per head of population

### Jobs change 2009 to 2014

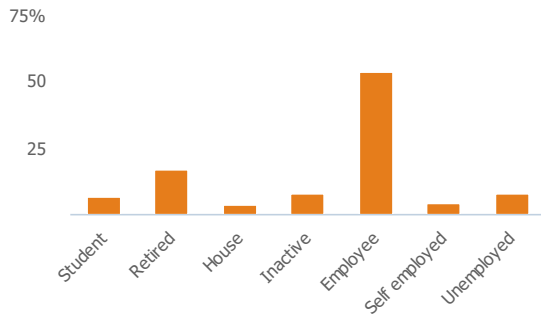
-4%

More than similar towns per head of population

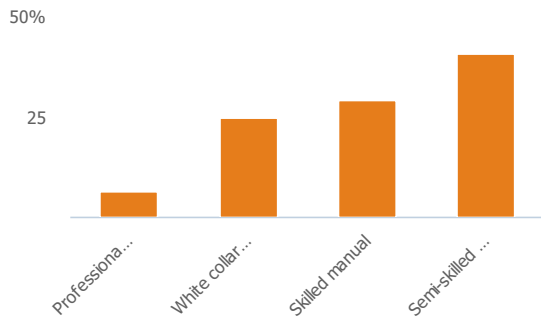
### Employment type(% working full time vs part time aged 16-74)



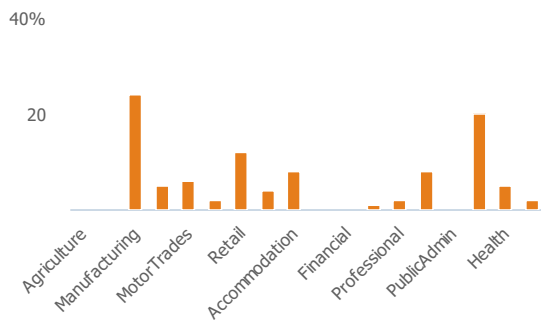
### Occupation (% aged 16-74)



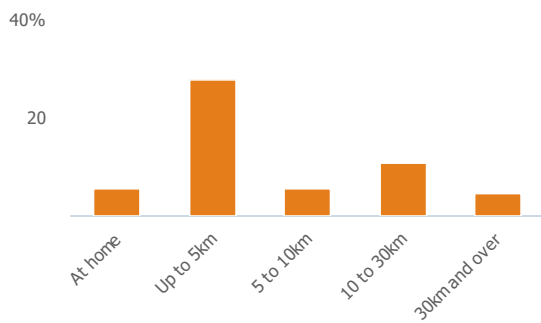
### Social Grade (% households aged 16-64)



### Sector Diversity

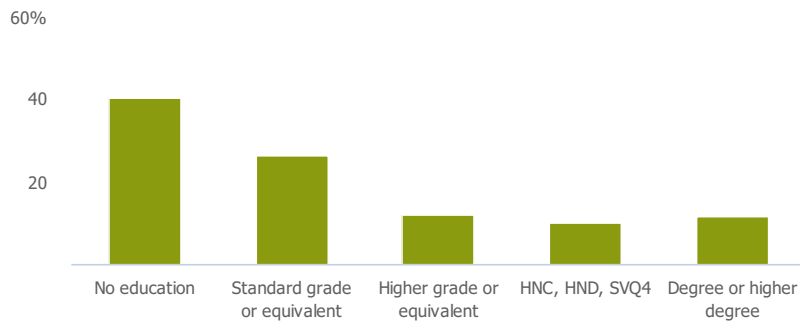


### Distance travelled to work



## Public

### Education (% all people aged 16 and over)



## Children in primary schools

233

Less than similar towns per head of population

## Commuter Flow Map

Coloured and grey lines/pins show the main and smaller commuter flows, respectively, between this town and the other towns in Scotland.

## Commercial

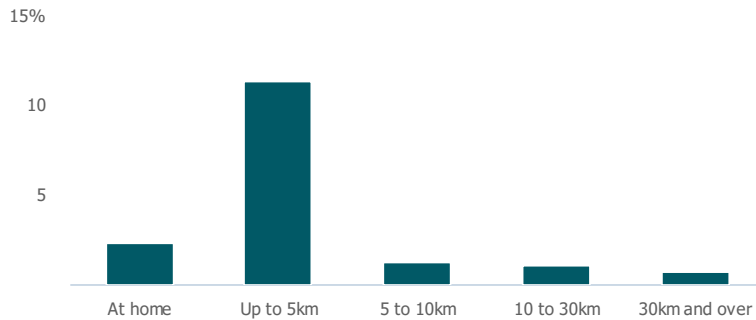
### Number of people per shop

173

Less than similar towns per head of population

## Social

### Distance travelled to study



### Number of residents per charity

2k

More than similar towns per head of population

## Connectivity and environment assets

### Average download speed (MBs)

21

More than similar towns per head of population

## Download

Download all of the Hurlford and Crookedholm data in PDF format.

[Download PDF \(https://uspreview.blob.core.windows.net/pdfs/Hurlford%20and%20Crookedholm.pdf\)](https://uspreview.blob.core.windows.net/pdfs/Hurlford%20and%20Crookedholm.pdf)