

Greengairs and Wattson, North Lanarkshire

Population 1,004

Greengairs and Wattston in North Lanarkshire developed as a mining and quarrying town. For a time following the closure of the collieries open cast mining continued. The site is now a landfill site and the methane used for the Greengairs Power Station.

Social and council housing are the norm in this type of small town. Manufacturing and construction are the dominant forms of employment. Health and social work services are particularly active. There is a higher level of unemployment. Educational attainment is low. Car ownership is low, meaning that many residents in these towns are reliant on public transport.

Greengairs and Wattston is a dependent to interdependent town.

Its most similar towns are [Patna](#), [New Cumnock](#), [Westquarter](#), and [Dalmellington and Burnton](#).

To gain more insight into Greengairs and Wattston, compare it to any of the other towns included in USP.

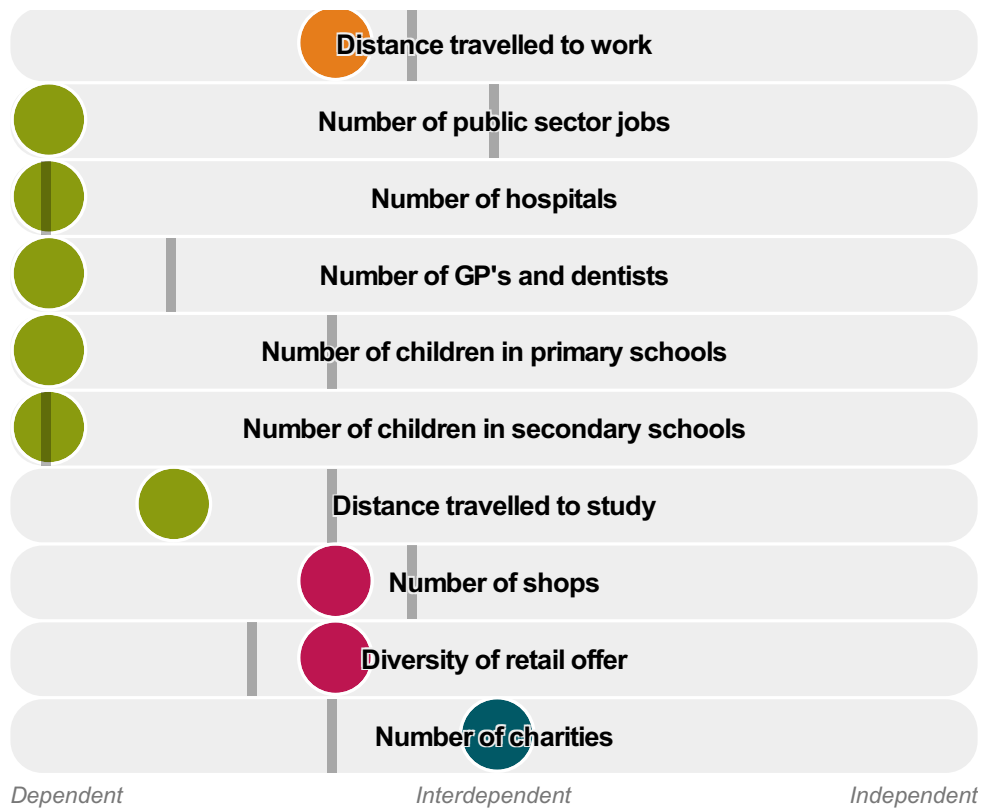
Inter-relationships

Dependent

Interdependent

Independent





Greengairs and Wattson is a **dependent to interdependent** town.

Combining inter-relationships and typology, Greengairs and Wattson is grouped with 16 other towns. It has similarities to these towns in terms of the number of charities, hospitals, children in secondary schools, shops, GP's and dentists, and diversity of retail offer. It also has similarities in the distance travelled to work, and the distance travelled to study.

It differs in terms of the number of jobs. Greengairs and Wattson differs most from its group in the number of children in primary schools, and public sector jobs.

- Employment
- Public
- Commercial
- Social
- Average for the category

Change

Population change 2001 to 2011

7%

More than similar towns per head of population

Population

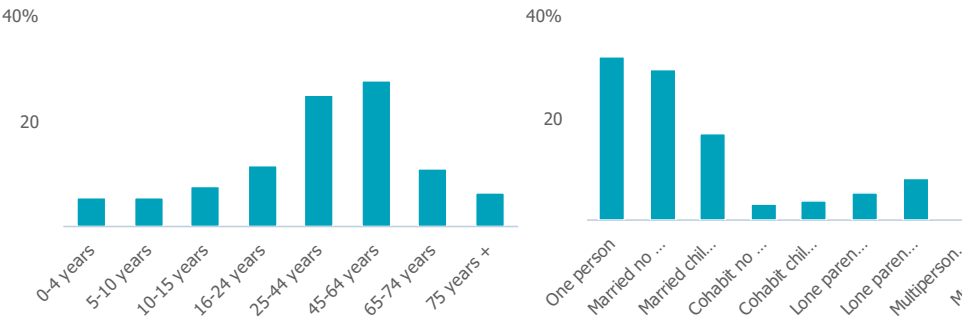
Population 2011

1k

Less than similar towns

Age

Household composition



Employment

Jobs

704

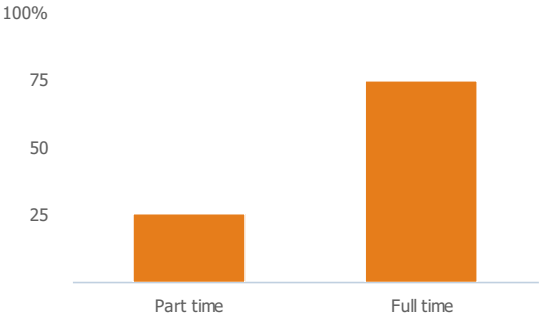
More than similar towns per head of population

Jobs change 2009 to 2014

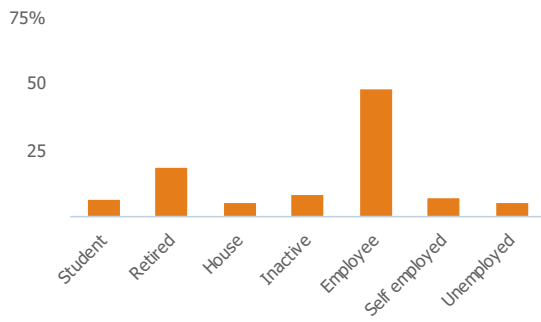
-16%

Less than similar towns per head of population

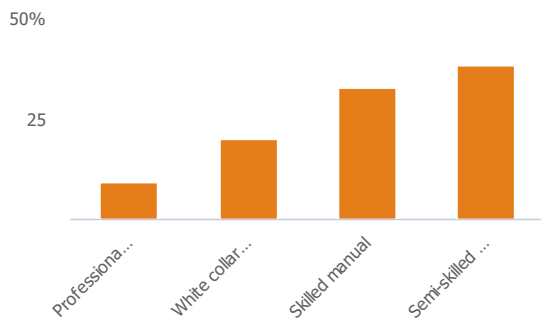
Employment type(% working full time vs part time aged 16-74)



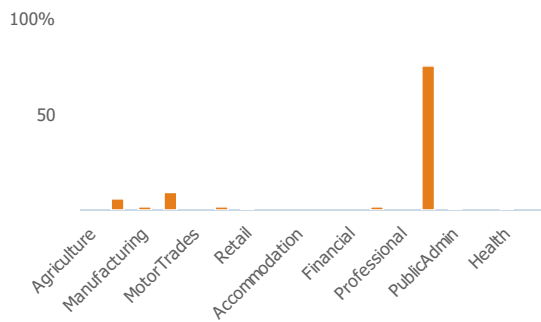
Occupation (%aged 16-74)



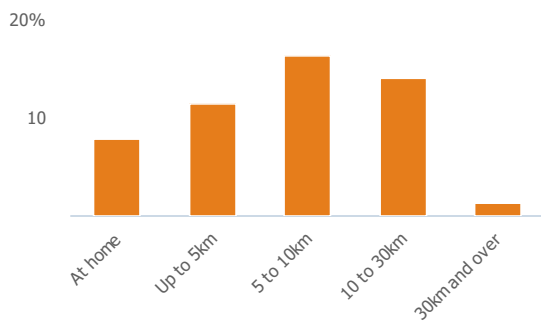
Social Grade (% households aged 16-64)



Sector Diversity

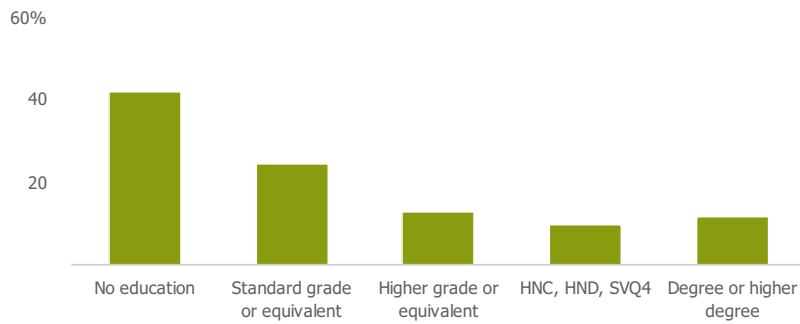


Distance travelled to work



Public

Education (% all people aged 16 and over)



Children in primary schools

0

Less than similar towns per head of population

Commuter Flow Map

Coloured and grey lines/pins show the main and smaller commuter flows, respectively, between this town and the other towns in Scotland.

Commercial

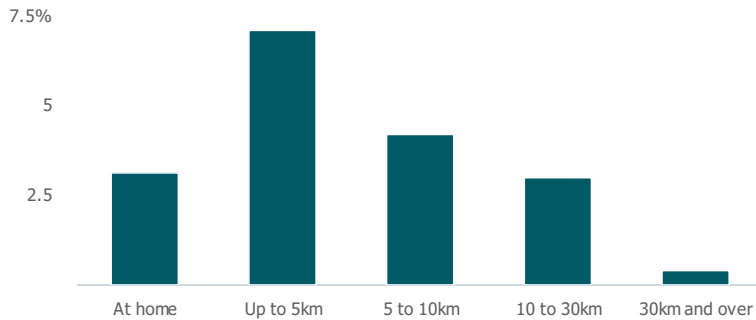
Number of people per shop

251

Less than similar towns per head of population

Social

Distance travelled to study



Number of residents per charity

335

Less than similar towns per head of population

Connectivity and environment assets

Average download speed (MBs)

7

Less than similar towns per head of population

Download

Download all of the Greengairs and Wattson data in PDF format.

[Download PDF \(https://uspreview.blob.core.windows.net/pdfs/Greengairs%20and%20Wattson.pdf\)](https://uspreview.blob.core.windows.net/pdfs/Greengairs%20and%20Wattson.pdf)

