

# Granttown-on-Spey, Highland

Population 2,428

Granttown-on-Spey is in Highland. It was an 18th century planned village created by the Grant family. It is a local service centre. It is also popular with tourists who have been visiting the town since Victorian times. Other industries include distilling and engineering and fabrication.

This type of small town is extremely mixed in terms of demographics. There are particularly wide ranges of people, housing and activities. The number of older couples with no children is higher than average. There is a mix of professional and non-professional jobs, and part-time and self-employment are both important for a significant proportion of residents. Socioeconomic status is higher than in other types of town and there is a mix of professionals and nonprofessionals, those with higher and lower educational attainment.

Granttown-on-Spey is an independent town.

Its most similar towns are [Aberfeldy](#), [Duns](#), [Biggar](#), and [Dornoch](#).

To gain more insight into Granttown-on-Spey, compare it to any of the other towns included in USP.

## Inter-relationships

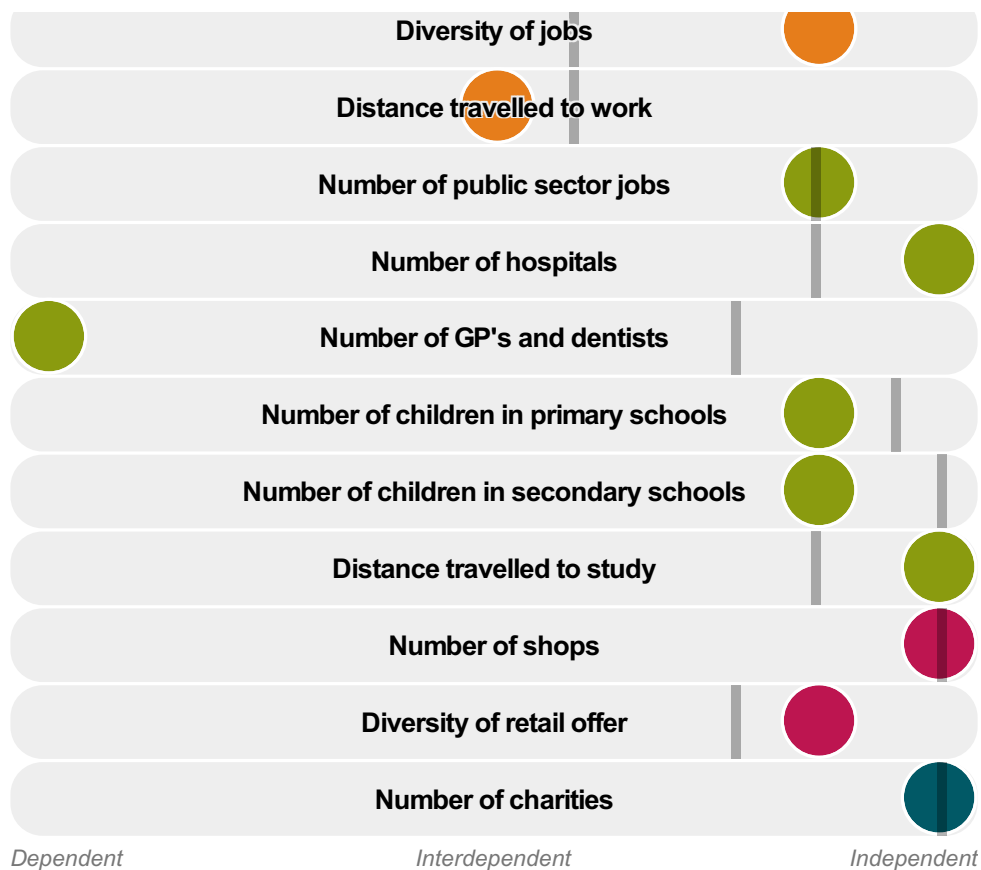
*Dependent*

*Interdependent*

*Independent*

Number of jobs





Granttown-on-Spey is an **independent** town.

Combining inter-relationships and typology, Granttown-on-Spey is grouped with 5 other towns. It has similarities to these towns in terms of the number of charities, hospitals, children in primary schools, children in secondary schools, jobs, public sector jobs, shops, and diversity of retail offer. It also has similarities in the distance travelled to work.

Granttown-on-Spey differs most from its group in the number of GP's and dentists.

- Employment
- Public
- Commercial
- Social
- Average for the category

## Change

### Population change 2001 to 2011

12%

Less than similar towns per head of population

## Population

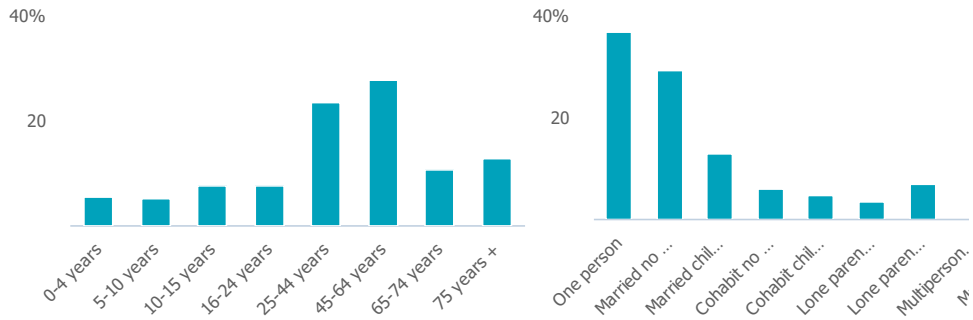
Population 2011

2k

More than similar towns

**Age**

**Household composition**



**Employment**

**Jobs**

1k

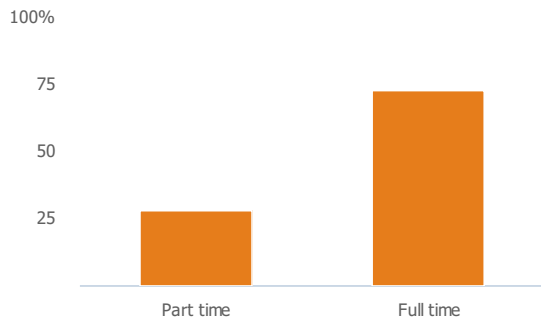
Less than similar towns per head of population

**Jobs change 2009 to 2014**

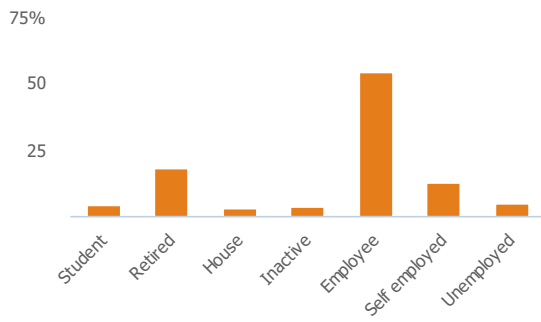
-15%

Less than similar towns per head of population

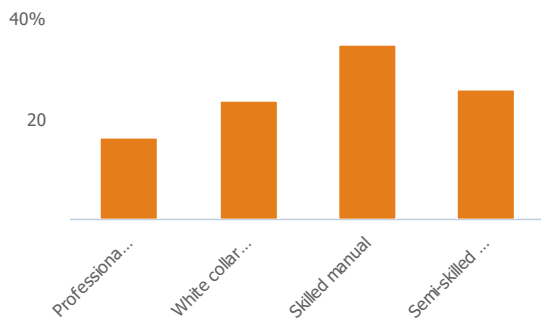
**Employment type(% working full time vs part time aged 16-74)**



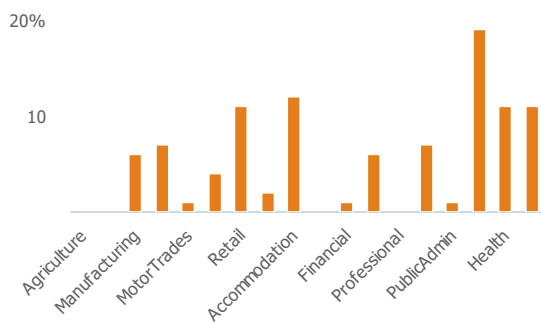
**Occupation (% aged 16-74)**



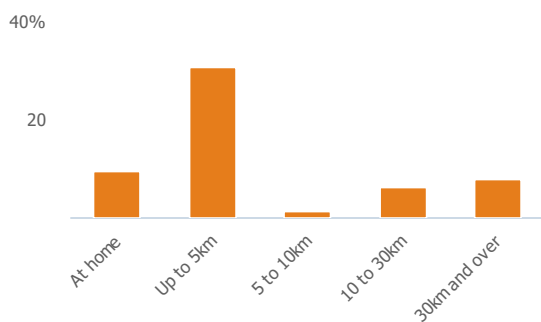
### Social Grade (% households aged 16-64)



### Sector Diversity

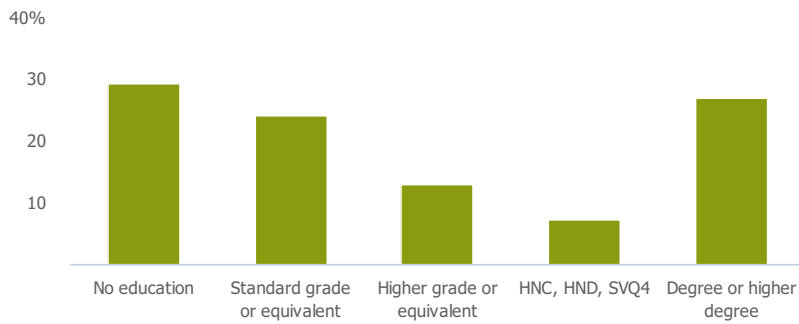


### Distance travelled to work



## Public

### Education (% all people aged 16 and over)



## Children in primary schools

249

Less than similar towns per head of population

## Commuter Flow Map

Coloured and grey lines/pins show the main and smaller commuter flows, respectively, between this town and the other towns in Scotland.

## Commercial

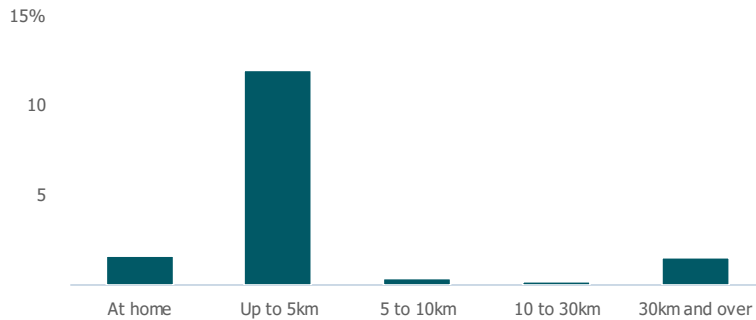
### Number of people per shop

39

Less than similar towns per head of population

## Social

### Distance travelled to study



### Number of residents per charity

93

More than similar towns per head of population

## Connectivity and environment assets

### Average download speed (MBs)

21

More than similar towns per head of population

## Download

Download all of the Grantown-on-Spey data in PDF format.

[Download PDF \(https://usppreview.blob.core.windows.net/pdfs/Grantown-on-Spey.pdf\)](https://usppreview.blob.core.windows.net/pdfs/Grantown-on-Spey.pdf)



UNIVERSITY of STIRLING

