

# Gowkthrapple, North Lanarkshire

Population 1,205

Gowkthrapple is in North Lanarkshire. It thrived on heavy industry (iron and steel) and clock making. In the 1970s public housing was built for the workers. Since these industries closed the town has struggled and much of that housing has been demolished. Today it is a residential area for neighbouring Wishaw.

Social and council housing are the norm in this type of small town. Manufacturing and construction are the dominant forms of employment. Health and social work services are particularly active. There is a higher level of unemployment. Educational attainment is low. Car ownership is low, meaning that many residents in these towns are reliant on public transport.

Gowkthrapple is a dependent to interdependent town.

Its most similar towns are [Kirkconnel](#), [Muirkirk](#), [Westquarter](#), and [New Cumnock](#).

To gain more insight into Gowkthrapple, compare it to any of the other towns included in USP.

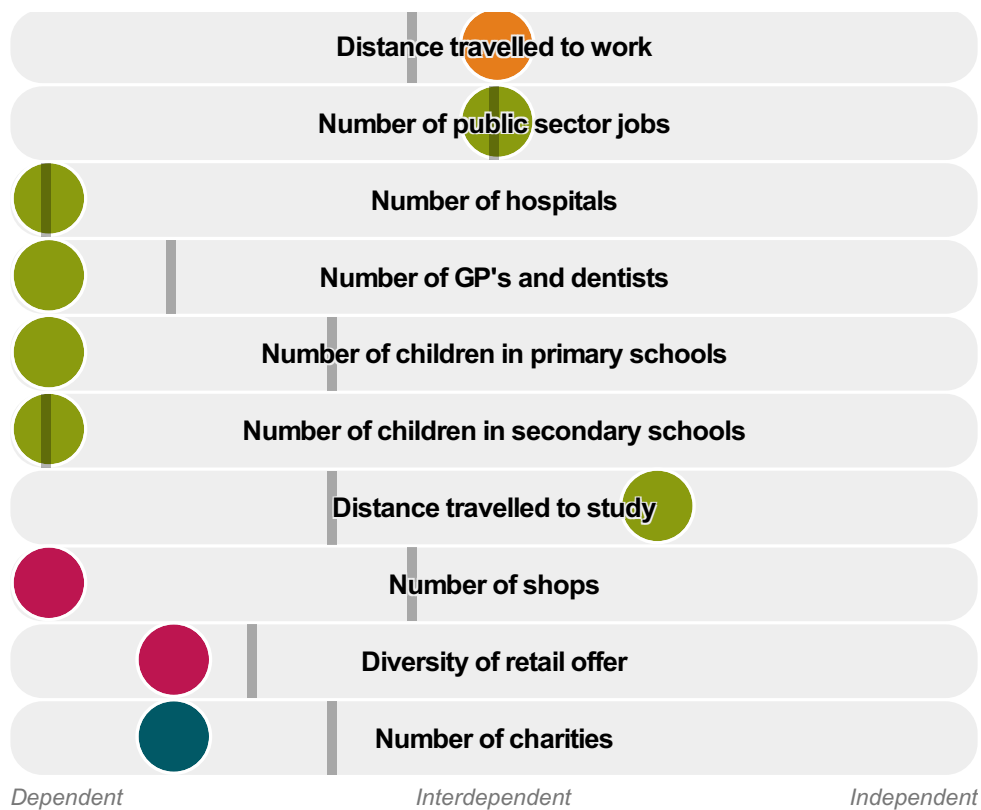
## Inter-relationships

*Dependent*

*Interdependent*

*Independent*





Gowkthrapple is a **dependent to interdependent** town.

Combining inter-relationships and typology, Gowkthrapple is grouped with 16 other towns. It has similarities to these towns in terms of the number of hospitals, children in secondary schools, public sector jobs, GP's and dentists, and diversity of retail offer. It also has similarities in the diversity of jobs, and the distance travelled to work.

It differs in terms of the number of jobs. It also differs in the distance travelled to study. Gowkthrapple differs most from its group in the number of children in primary schools, and shops.

- Employment
- Public
- Commercial
- Social
- Average for the category

## Change

### Population change 2001 to 2011

42%

More than similar towns per head of population

## Population

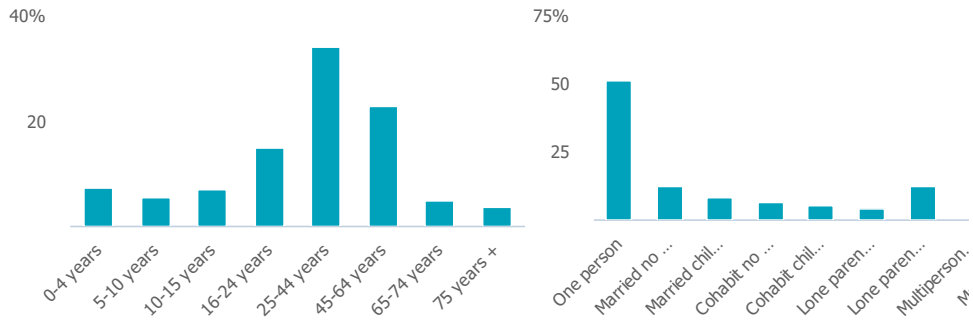
### Population 2011

1k

Less than similar towns

**Age**

**Household composition**



**Employment**

**Jobs**

355

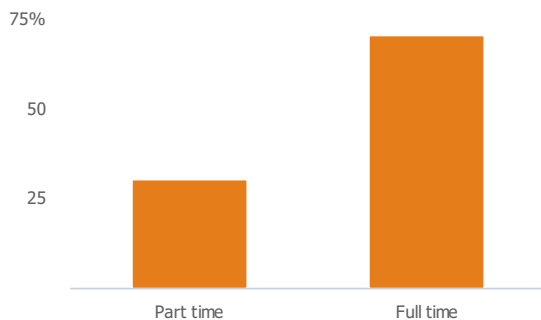
More than similar towns per head of population

**Jobs change 2009 to 2014**

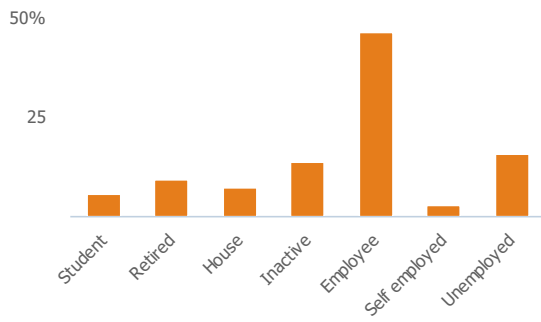
15%

More than similar towns per head of population

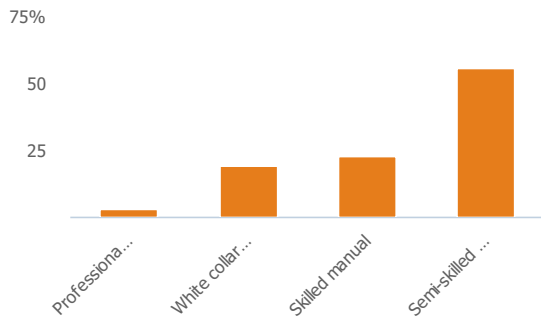
**Employment type(% working full time vs part time aged 16-74)**



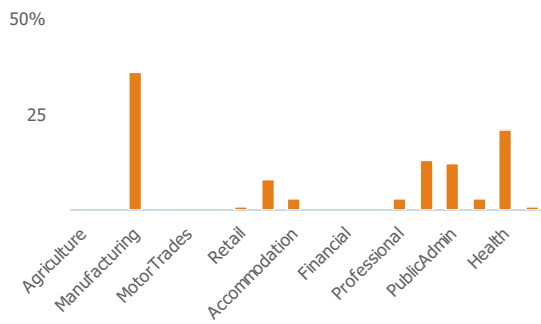
**Occupation (% aged 16-74)**



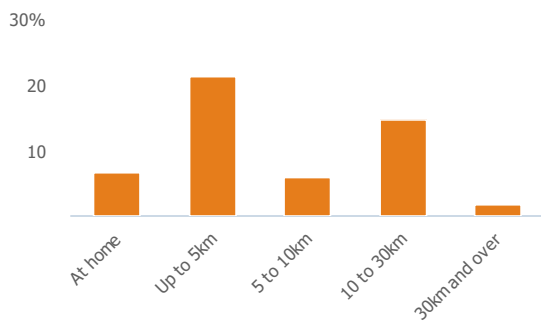
### Social Grade (% households aged 16-64)



### Sector Diversity

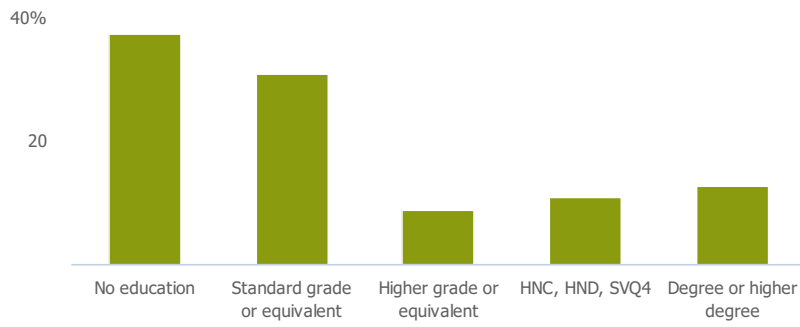


### Distance travelled to work



## Public

### Education (% all people aged 16 and over)



## Children in primary schools

0

Less than similar towns per head of population

## Commuter Flow Map

Coloured and grey lines/pins show the main and smaller commuter flows, respectively, between this town and the other towns in Scotland.

## Commercial

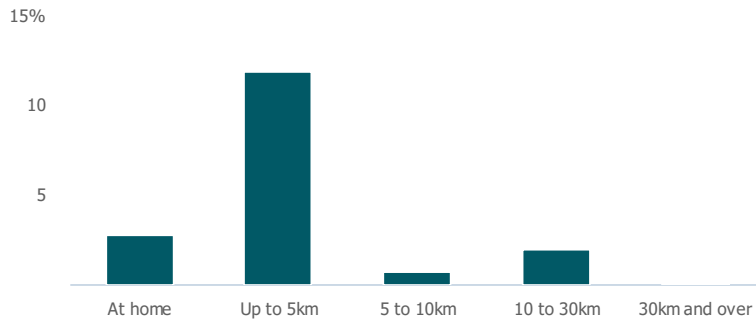
### Number of people per shop

0

Less than similar towns per head of population

## Social

### Distance travelled to study



### Number of residents per charity

1k

More than similar towns per head of population

## Connectivity and environment assets

### Average download speed (MBs)

45

More than similar towns per head of population

## Download

Download all of the Gowkthrapple data in PDF format.

[Download PDF \(https://usppreview.blob.core.windows.net/pdfs/Gowkthrapple.pdf\)](https://usppreview.blob.core.windows.net/pdfs/Gowkthrapple.pdf)



UNIVERSITY of STIRLING

