

# Giffnock, East Renfrewshire

Population 12,156

Giffnock in East Renfrewshire is effectively a suburb of Glasgow.

This type of large town is a suburban or commuter locality with a prevalence of higher income and private housing. A large proportion of the population are over 45, and many are retired. Many people own their home. There is also a high proportion of people in professional employment and a high proportion of residents are educated to HNC level or above. Many residents own two or more cars.

Giffnock is an interdependent to independent town.

Its most similar towns are [Helensburgh](#), [Prestwick](#), [Linlithgow](#), and [Bishopbriggs](#).

To gain more insight into Giffnock, compare it to any of the other towns included in USP.

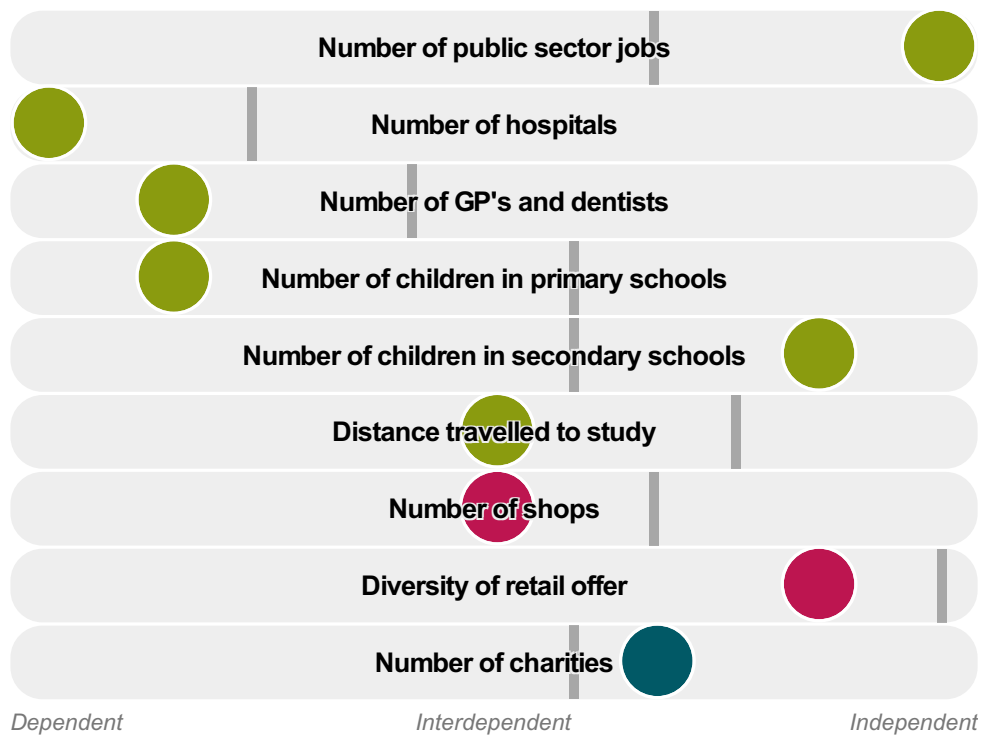
## Inter-relationships

*Dependent*

*Interdependent*

*Independent*





Giffnock is an **interdependent to independent** town.

Combining inter-relationships and typology, Giffnock is grouped with 6 other towns. It has similarities to these towns in terms of the number of charities, jobs, shops, and diversity of retail offer. It also has similarities in the diversity of jobs.

It differs in terms of the number of children in secondary schools, and public sector jobs. It also differs in the distance travelled to work, and the distance travelled to study. Giffnock differs most from its group in the number of children in primary schools, and GP's and dentists.

- Employment
- Public
- Commercial
- Social
- Average for the category

## Change

### Population change 2001 to 2011

0%

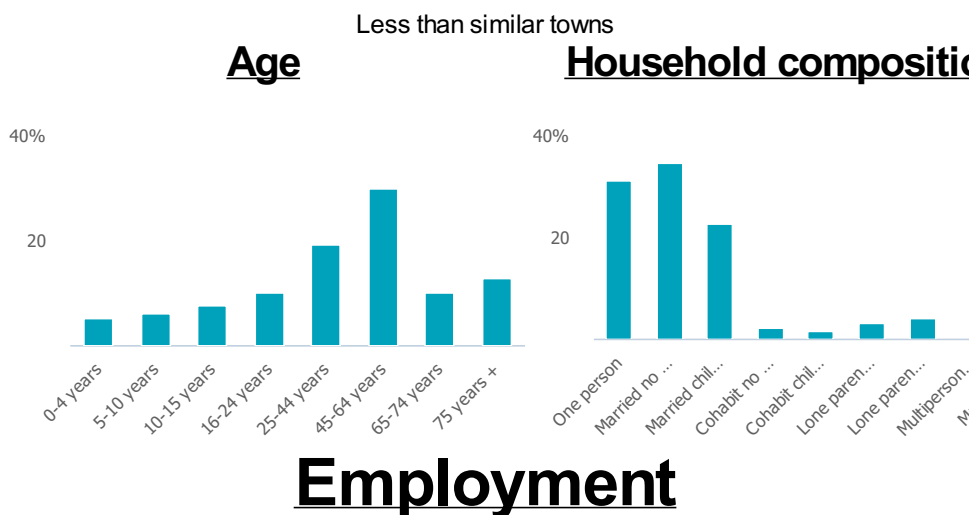
Less than similar towns per head of population

## Population

### Population 2011

12k

128



### Jobs

3k

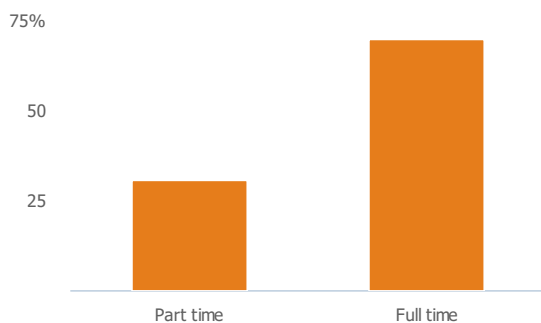
Less than similar towns per head of population

### Jobs change 2009 to 2014

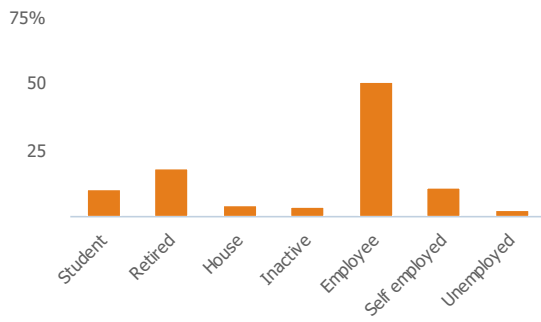
-5%

Less than similar towns per head of population

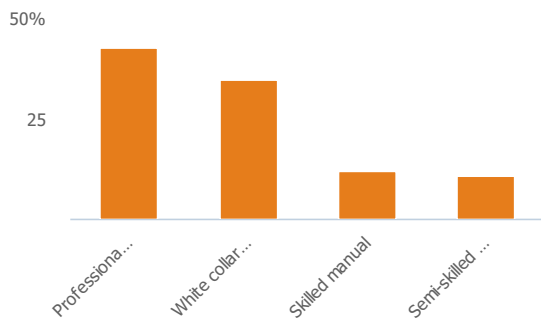
### Employment type(% working full time vs part time aged 16-74)



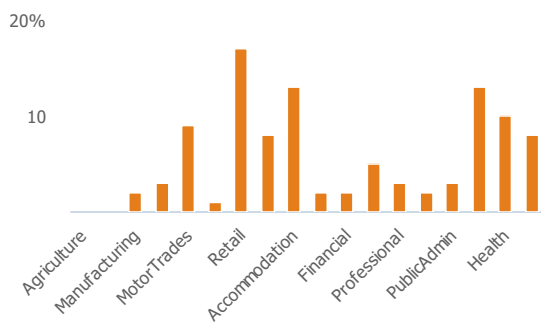
### Occupation (% aged 16-74)



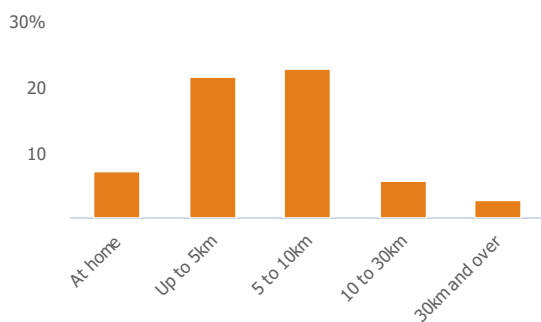
### Social Grade (% households aged 16-64)



### Sector Diversity

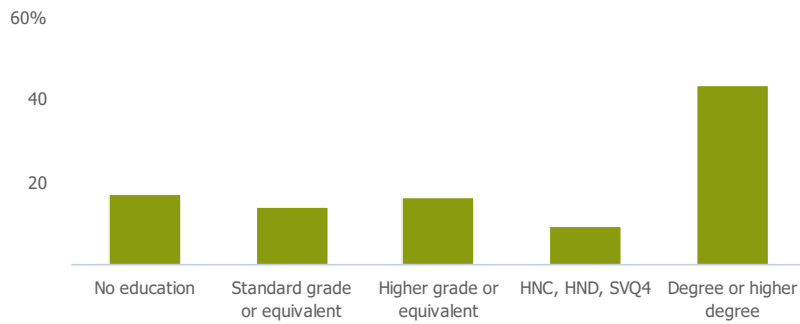


### Distance travelled to work



## Public

### Education (% all people aged 16 and over)



## Children in primary schools

582

Less than similar towns per head of population

## Commuter Flow Map

Coloured and grey lines/pins show the main and smaller commuter flows, respectively, between this town and the other towns in Scotland.

## Commercial

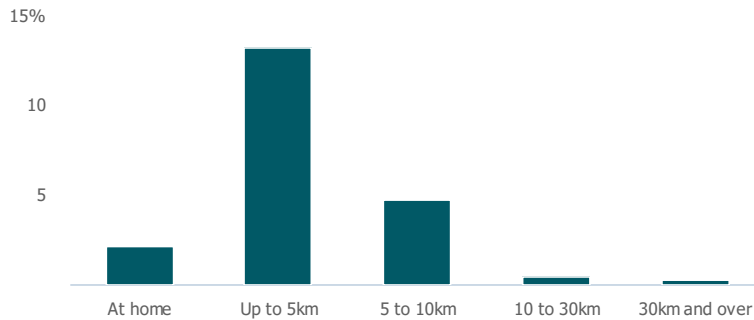
### Number of people per shop

132

Less than similar towns per head of population

## Social

### Distance travelled to study



### Number of residents per charity

213

Less than similar towns per head of population

## Connectivity and environment assets

### Average download speed (MBs)

56

More than similar towns per head of population

## Download

Download all of the Giffnock data in PDF format.

[Download PDF \(https://usppreview.blob.core.windows.net/pdfs/Giffnock.pdf\)](https://usppreview.blob.core.windows.net/pdfs/Giffnock.pdf)