

Dundee, Dundee City

Population 147,285

Dundee in Dundee City Council area is the town of jam, jute and journalism reflecting the importance of the port in importing jute, marmalade making and DC Thompson, the publishing magnate whose publications include the comic The Beano. Its strapline 'City of Discovery' or now 'One City, Many Discoveries' spans its Antarctic explorations of the past and the biomedical research of the present. It will shortly be home to the new V&A gallery. It became UNESCO City of Design in 2014. The digital entertainment sector is a key industry and for the city.

Social and council housing are the norm in this type of city-sized town. Manufacturing and construction are the dominant forms of employment. Health and social work services are particularly active. There is a relatively high level of unemployment. Educational attainment is low. Car ownership is low, meaning that many residents in these towns are reliant on public transport.

Dundee is an interdependent to independent town.

Its most similar town is [Paisley](#).

To gain more insight into Dundee, compare it to any of the other towns included in USP.

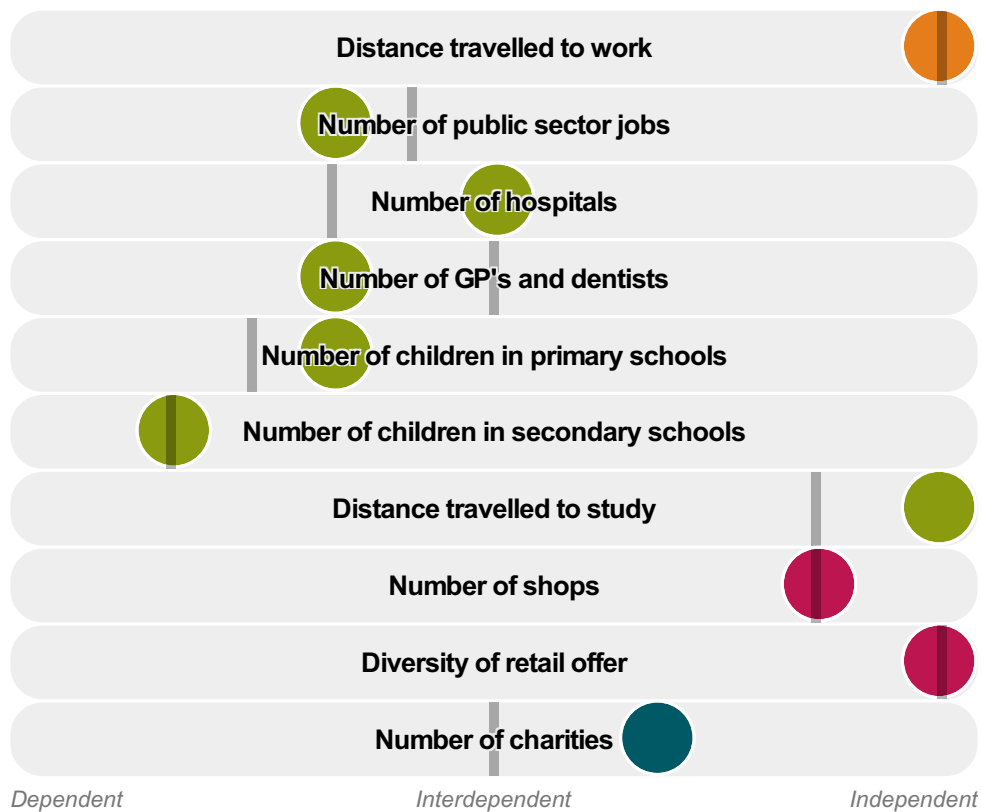
Inter-relationships

Dependent

Interdependent

Independent





Dundee is an **interdependent to independent** town.

Combining inter-relationships and typology, Dundee is grouped with 1 other town. It has similarities to these towns in terms of the number of charities, hospitals, children in primary schools, children in secondary schools, jobs, public sector jobs, shops, GP's and dentists, and diversity of retail offer. It also has similarities in the diversity of jobs, the distance travelled to work, and the distance travelled to study.

- Employment
- Public
- Commercial
- Social
- ▬ Average for the category

Change

Population change 2001 to 2011

1%

Less than similar towns per head of population

Population

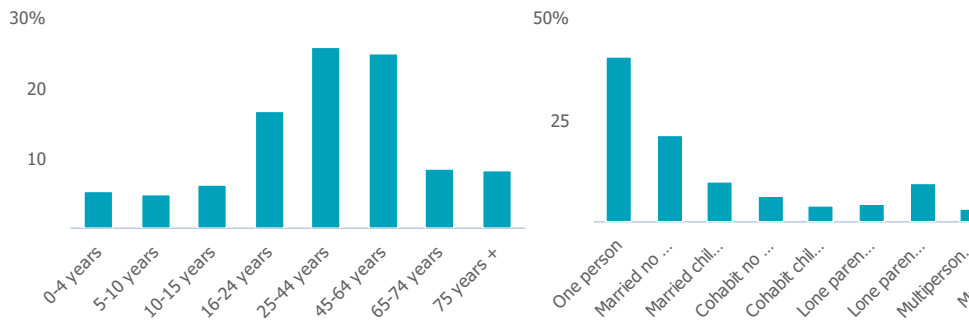
Population 2011

147k

More than similar towns

Age

Household composition



Employment

Jobs

73k

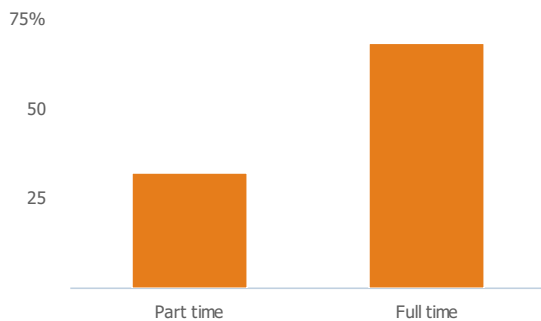
Less than similar towns per head of population

Jobs change 2009 to 2014

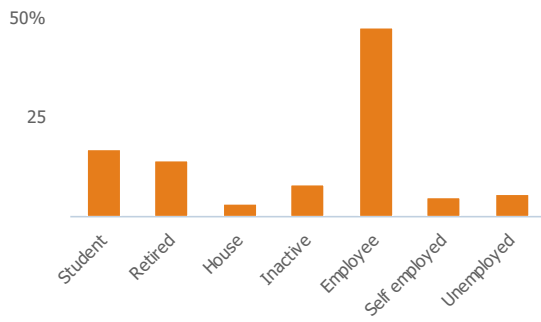
-3%

More than similar towns per head of population

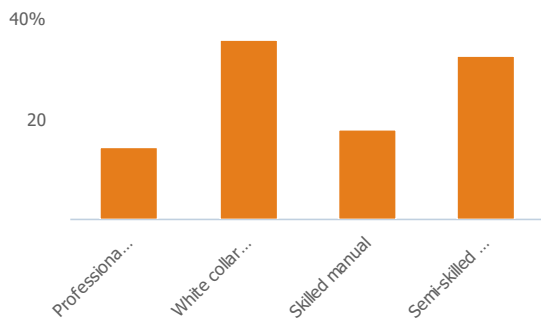
Employment type(% working full time vs part time aged 16-74)



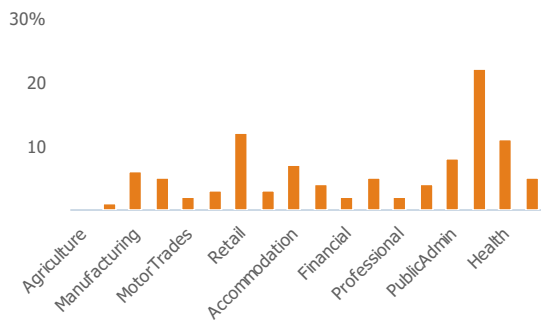
Occupation (% aged 16-74)



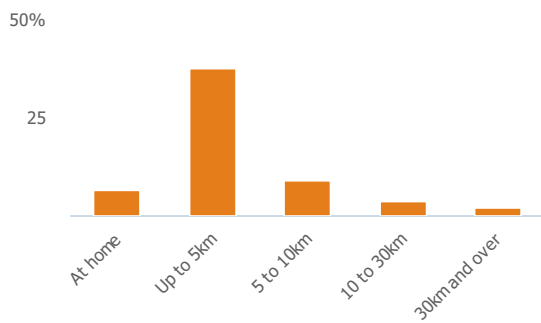
Social Grade (% households aged 16-64)



Sector Diversity

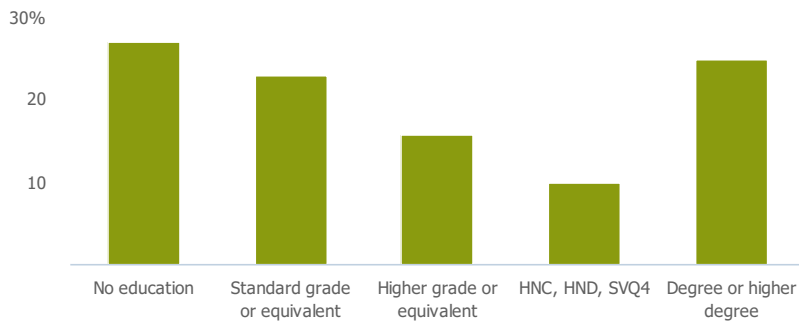


Distance travelled to work



Public

Education (% all people aged 16 and over)



Children in primary schools

11k

More than similar towns per head of population

Commuter Flow Map

Coloured and grey lines/pins show the main and smaller commuter flows, respectively, between this town and the other towns in Scotland.

Commercial

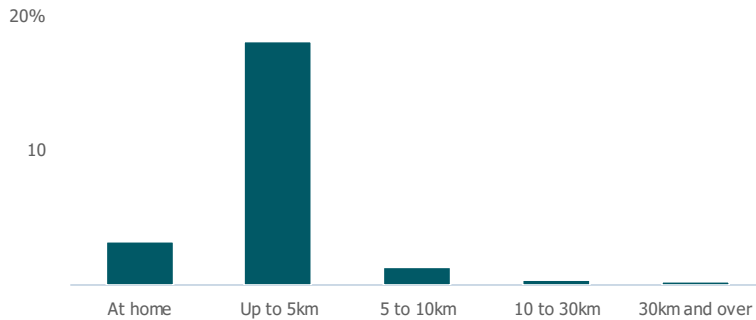
Number of people per shop

82

Less than similar towns per head of population

Social

Distance travelled to study



Number of residents per charity

244

Less than similar towns per head of population

Connectivity and environment assets

Average download speed (MBs)

53

Less than similar towns per head of population

Download

Download all of the Dundee data in PDF format.

[Download PDF \(https://usppreview.blob.core.windows.net/pdfs/Dundee.pdf\)](https://usppreview.blob.core.windows.net/pdfs/Dundee.pdf)



UNIVERSITY of STIRLING

