

Cockenzie, East Lothian

Population 5,551

Cockenzie in East Lothian was a 17th century fishing and whaling village with the port known as Port Seton. Mining saw the town expand. The coal fired Cockenzie power station closed in 2013. Today the town is a commuter settlement for Edinburgh.

This type of medium-sized town is extremely mixed in terms of demographics. There is a particularly wide range of people, housing and activities. The number of older couples with no children are higher than average. There is a mix of professional and non-professional jobs, and part-time and self-employment are both important for a significant proportion of residents. Socioeconomic status is higher than in other kinds of town and there is a mix of professionals and nonprofessionals, those with higher and lower educational attainment.

Cockenzie is an interdependent to dependent town.

Its most similar towns are [Holytown](#), [East Calder](#), [Clackmannan](#), and [Locharbriggs](#).

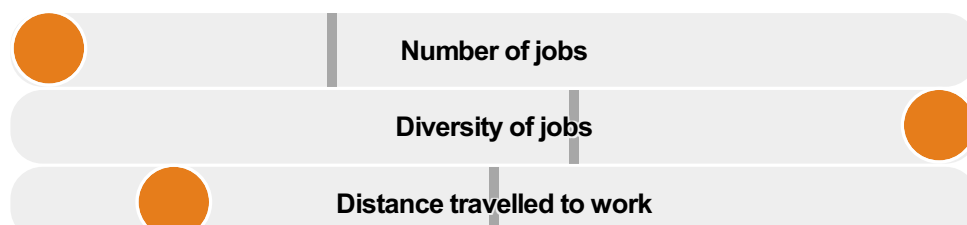
To gain more insight into Cockenzie, compare it to any of the other towns included in USP.

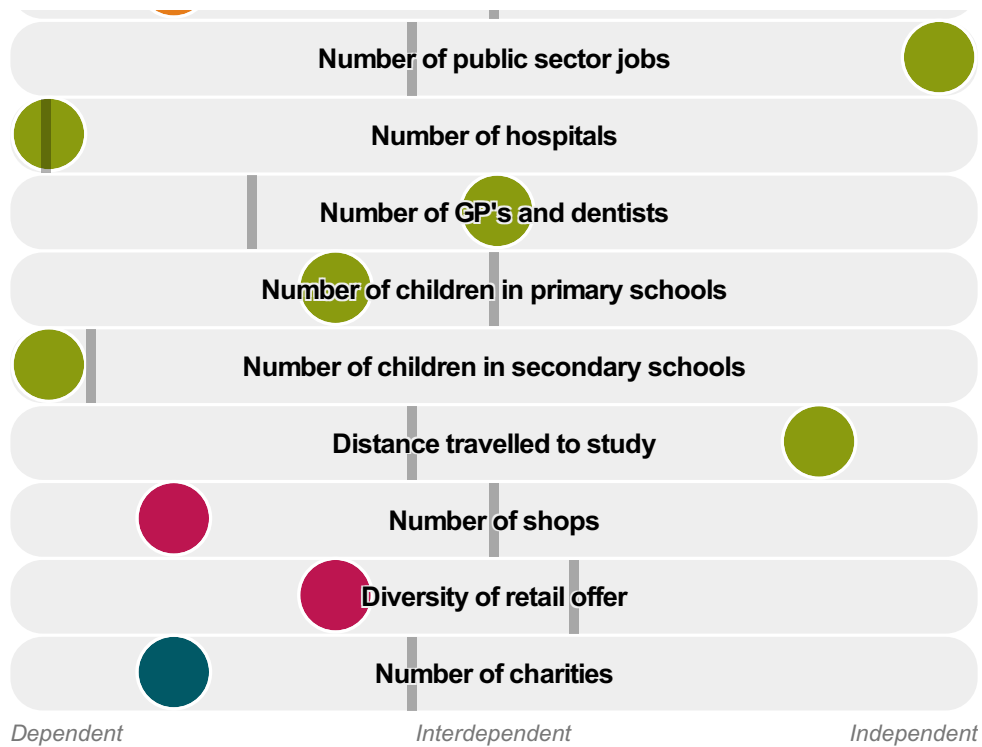
Inter-relationships

Dependent

Interdependent

Independent





Cockerzie is an **interdependent to dependent** town.

Combining inter-relationships and typology, Cockerzie is grouped with 16 other towns. It has similarities to these towns in terms of the number of hospitals, children in primary schools, and children in secondary schools.

It differs in terms of the number of public sector jobs, shops, and GP's and dentists. It also differs in the diversity of jobs, the distance travelled to work, and the distance travelled to study. Cockerzie differs most from its group in the number of jobs.

- Employment
- Public
- Commercial
- Social
- Average for the category

Change

Population change 2001 to 2011

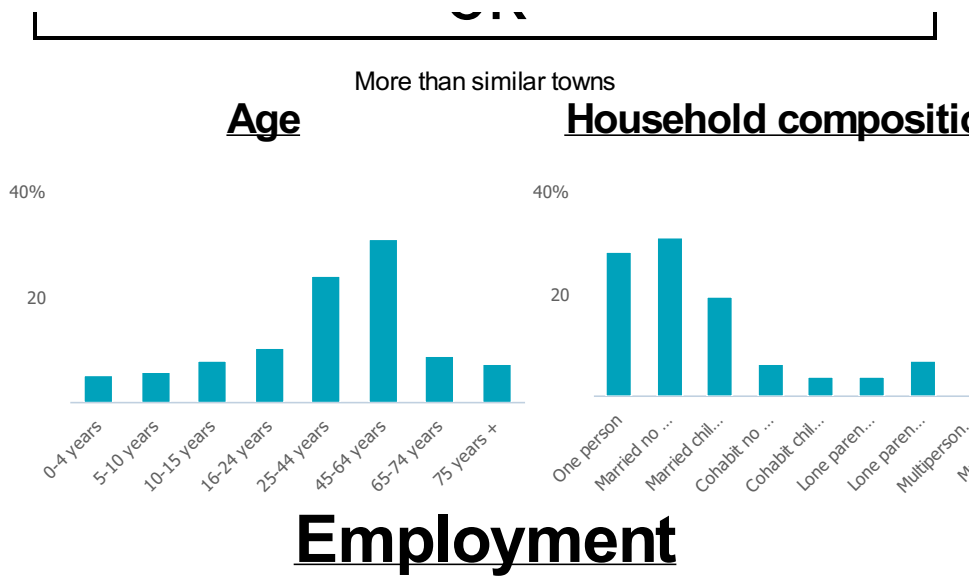
1%

Less than similar towns per head of population

Population

Population 2011

6k



Jobs

490

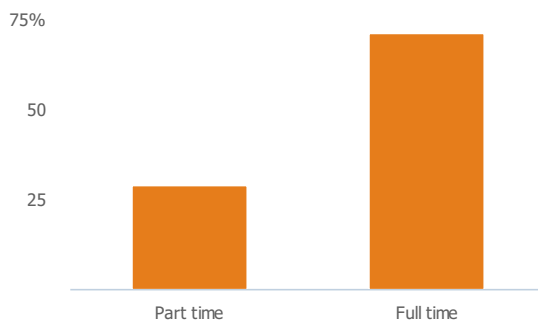
Less than similar towns per head of population

Jobs change 2009 to 2014

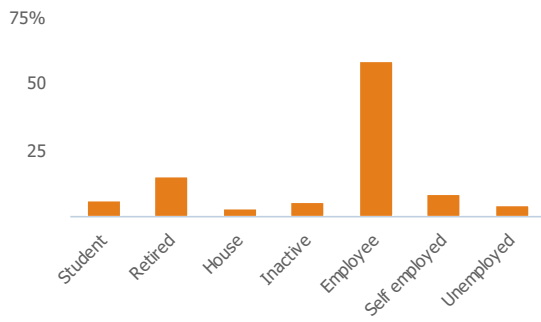
-30%

Less than similar towns per head of population

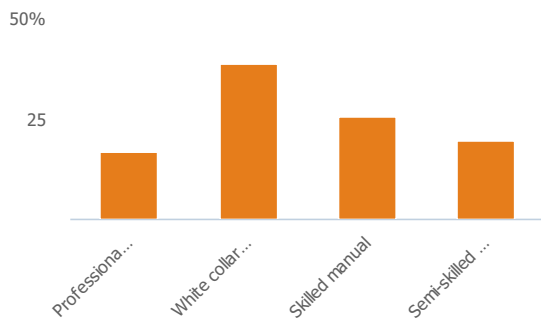
Employment type(% working full time vs part time aged 16-74)



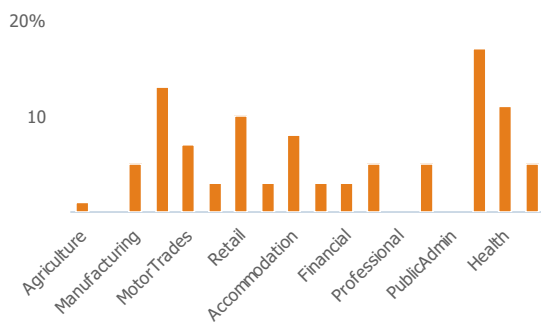
Occupation (% aged 16-74)



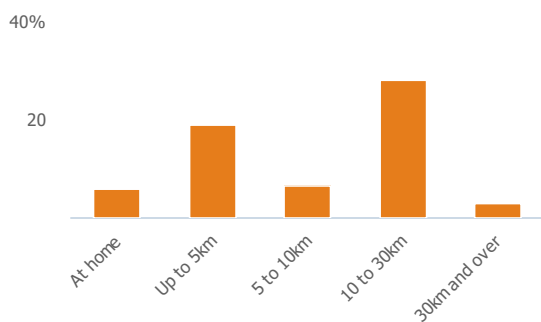
Social Grade (% households aged 16-64)



Sector Diversity

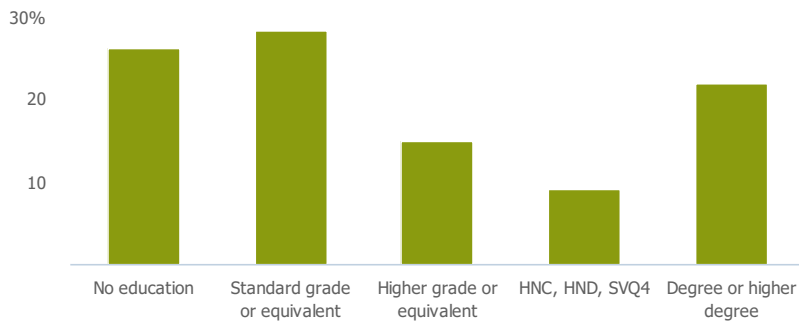


Distance travelled to work



Public

Education (% all people aged 16 and over)



Children in primary schools

417

Less than similar towns per head of population

Commuter Flow Map

Coloured and grey lines/pins show the main and smaller commuter flows, respectively, between this town and the other towns in Scotland.

Commercial

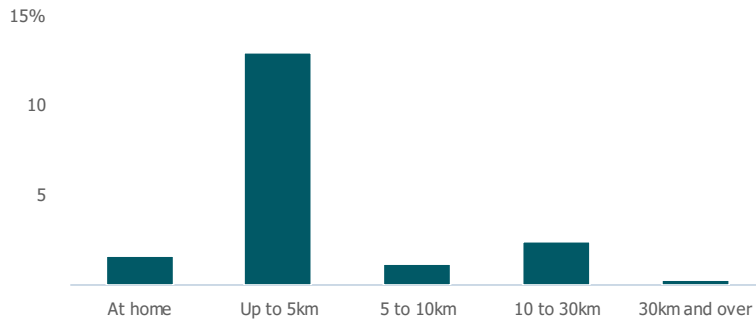
Number of people per shop

694

Less than similar towns per head of population

Social

Distance travelled to study



Number of residents per charity

1k

More than similar towns per head of population

Connectivity and environment assets

Average download speed (MBs)

21

Less than similar towns per head of population

Download

Download all of the Cockenzie data in PDF format.

[Download PDF \(https://usppreview.blob.core.windows.net/pdfs/Cockenzie.pdf\)](https://usppreview.blob.core.windows.net/pdfs/Cockenzie.pdf)



UNIVERSITY of STIRLING

