

Coatbridge, North Lanarkshire

Population 43,841

Coatbridge in North Lanarkshire developed as an industrial town sometimes called the 'Iron Burgh'. It was known for its blast furnaces in the 19th century and early 20th century but the plant moved to Corby and shipbuilding demand for iron was declining. The remaining furnace closed in the late 1960s. Today it is a post industrial town benefitting from its proximity to Glasgow for employment.

Social and council housing are the norm in these large towns. Manufacturing and construction are the dominant forms of employment. Health and social work services are particularly active. There is a relatively high level of unemployment. Educational attainment is low. Car ownership is low, meaning that many residents in these towns are reliant on public transport.

Coatbridge is an interdependent to independent town.

Its most similar towns are [Arbroath](#), [Buckhaven](#), [Methil](#), [Methilhill and Leven](#), [Saltcoats](#), and [Alloa](#).

To gain more insight into Coatbridge, compare it to any of the other towns included in USP.

Inter-relationships

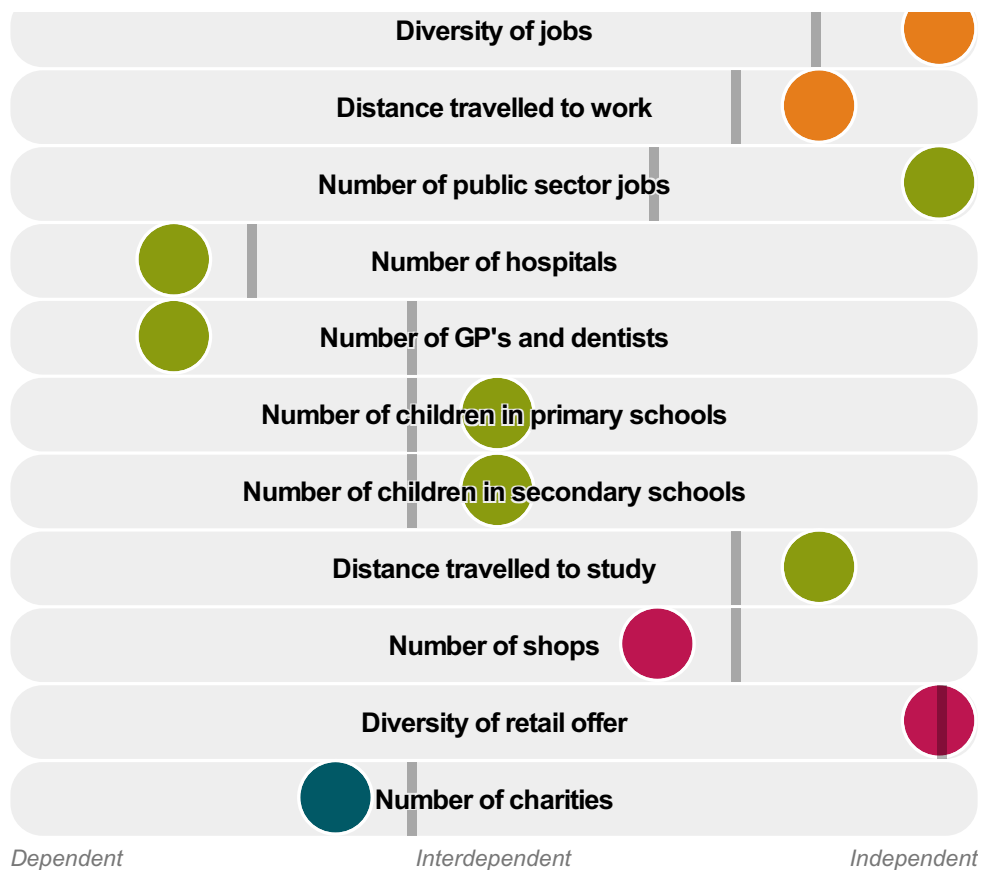
Dependent

Interdependent

Independent

Number of jobs





Coatbridge is an **interdependent to independent** town.

Combining inter-relationships and typology, Coatbridge is grouped with 10 other towns. It has similarities to these towns in terms of the number of charities, hospitals, children in primary schools, children in secondary schools, shops, and diversity of retail offer. It also has similarities in the distance travelled to work, and the distance travelled to study.

It differs in terms of the number of public sector jobs. Coatbridge differs most from its group in the number of GP's and dentists.

- Employment
- Public
- Commercial
- Social
- Average for the category

Change

Population change 2001 to 2011

6%

Less than similar towns per head of population

Population

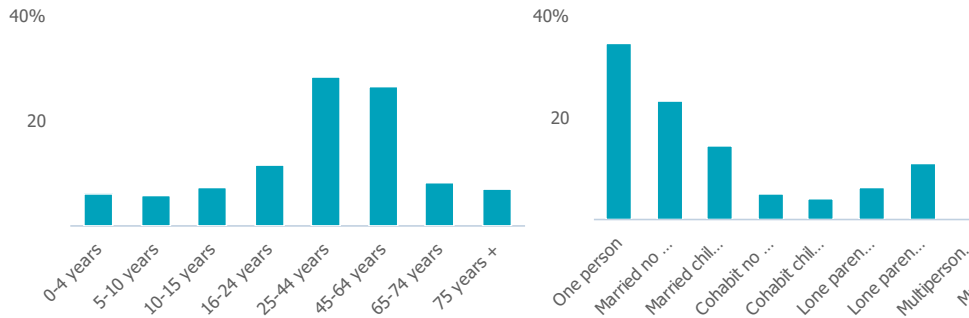
Population 2011

44k

More than similar towns

Age

Household composition



Employment

Jobs

22k

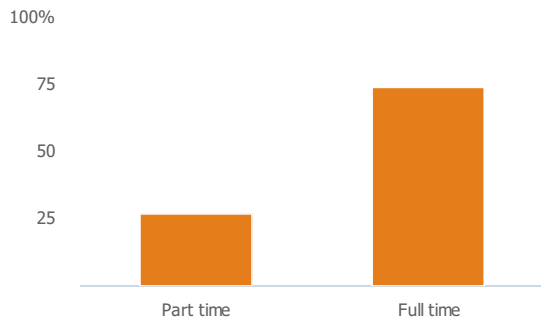
More than similar towns per head of population

Jobs change 2009 to 2014

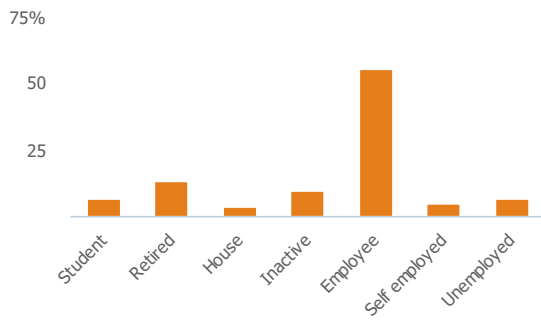
13%

More than similar towns per head of population

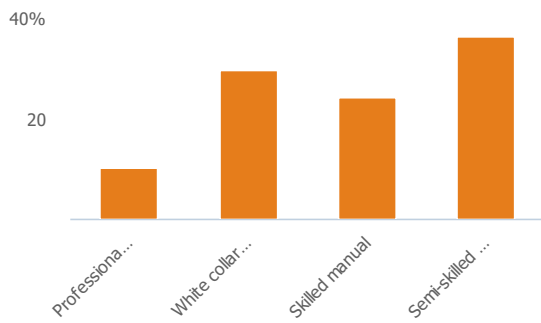
Employment type(% working full time vs part time aged 16-74)



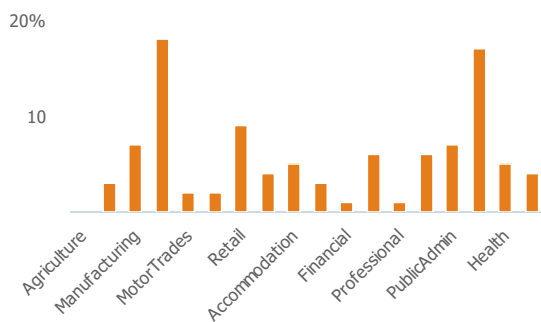
Occupation (% aged 16-74)



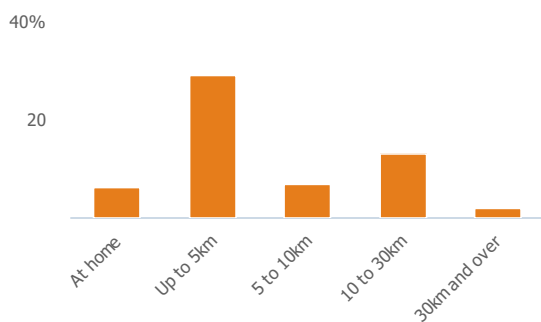
Social Grade (% households aged 16-64)



Sector Diversity

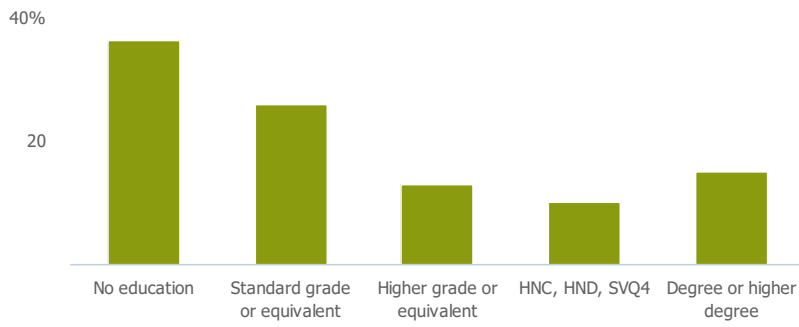


Distance travelled to work



Public

Education (% all people aged 16 and over)



Children in primary schools

3k

More than similar towns per head of population

Commuter Flow Map

Coloured and grey lines/pins show the main and smaller commuter flows, respectively, between this town and the other towns in Scotland.

Commercial

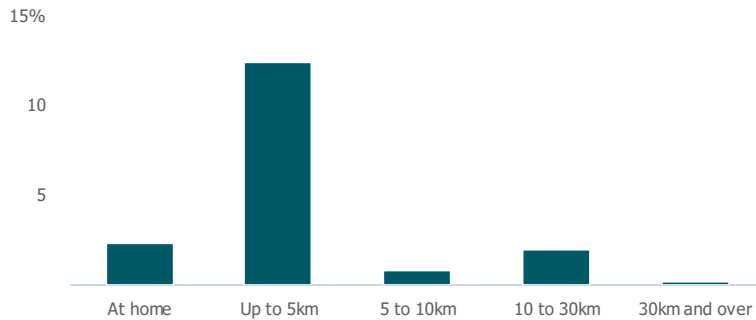
Number of people per shop

121

Less than similar towns per head of population

Social

Distance travelled to study



Number of residents per charity

569

Less than similar towns per head of population

Connectivity and environment assets

Average download speed (MBs)

56

Less than similar towns per head of population

Download

Download all of the Coatbridge data in PDF format.

[Download PDF \(https://usppreview.blob.core.windows.net/pdfs/Coatbridge.pdf\)](https://usppreview.blob.core.windows.net/pdfs/Coatbridge.pdf)

