

# Clackmannan, Clackmannanshire

Population 3,442

Clackmannan in Clackmannanshire is a pre-Christian settlement in origin. Later it came under the control of Cambuskenneth abbey. It was the county town for Clackmannanshire in the 1800s. It is a former mining settlement.

This type of medium-sized town is extremely mixed in terms of demographics. There is a particularly wide range of people, housing and activities. The number of older couples with no children are higher than average. There is a mix of professional and non-professional jobs, and part-time and self-employment are both important for a significant proportion of residents. Socioeconomic status is higher than in other kinds of town and there is a mix of professionals and nonprofessionals, those with higher and lower educational attainment.

Clackmannan is an interdependent to dependent town.

Its most similar towns are [Cockenzie](#), [Holytown](#), [East Calder](#), and [Tullibody](#).

To gain more insight into Clackmannan, compare it to any of the other towns included in USP.

## Inter-relationships

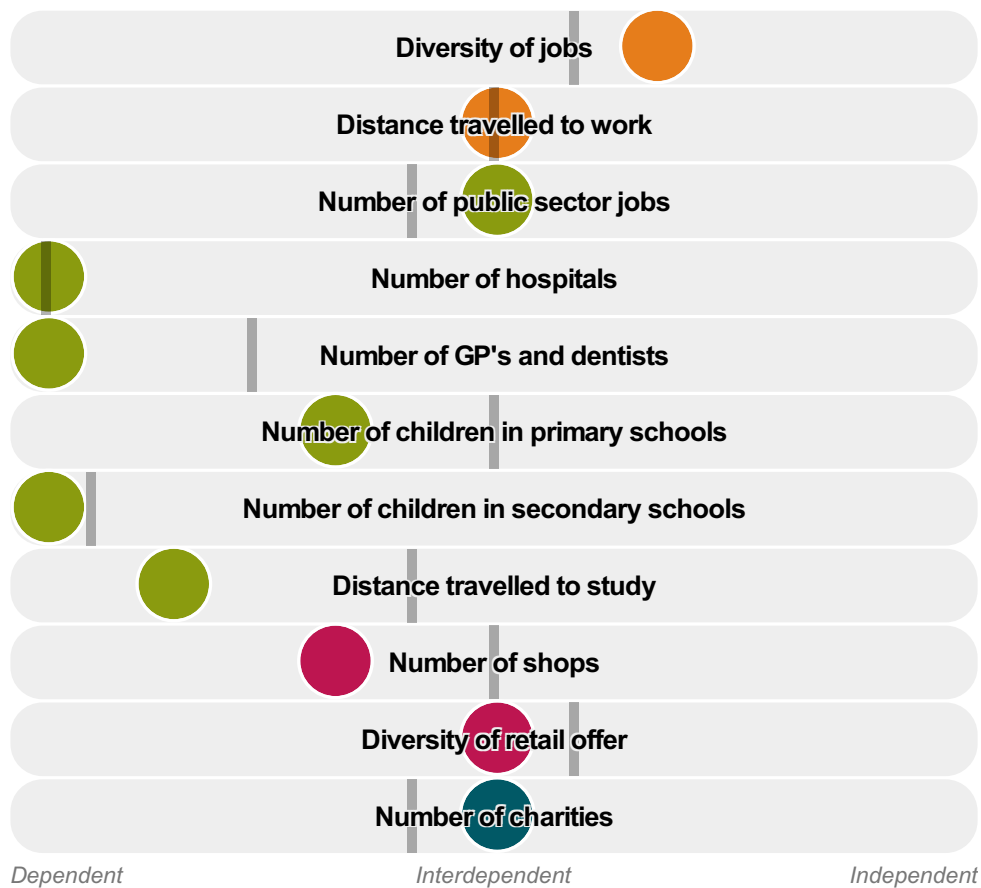
*Dependent*

*Interdependent*

*Independent*



**Number of jobs**



Clackmannann is an **interdependent to dependent** town.

Combining inter-relationships and typology, Clackmannann is grouped with 16 other towns. It has similarities to these towns in terms of the number of charities, hospitals, children in primary schools, children in secondary schools, jobs, public sector jobs, shops, and diversity of retail offer. It also has similarities in the diversity of jobs, and the distance travelled to work.

Clackmannann differs most from its group in the distance travelled to study.

- Employment
- Public
- Commercial
- Social
- ▬ Average for the category

## Change

### Population change 2001 to 2011

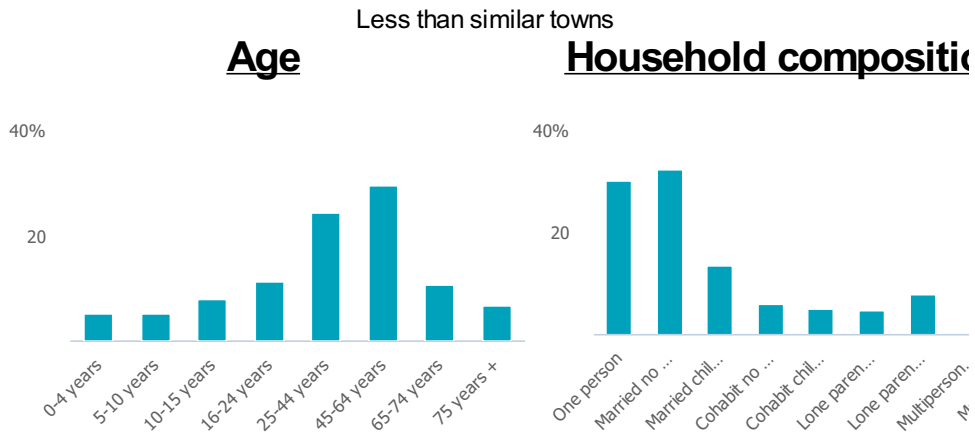
0%

Less than similar towns per head of population

## Population

## Population 2011

3k



## Employment

### Jobs

517

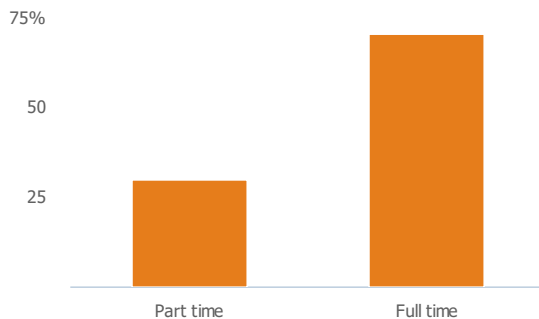
Less than similar towns per head of population

### Jobs change 2009 to 2014

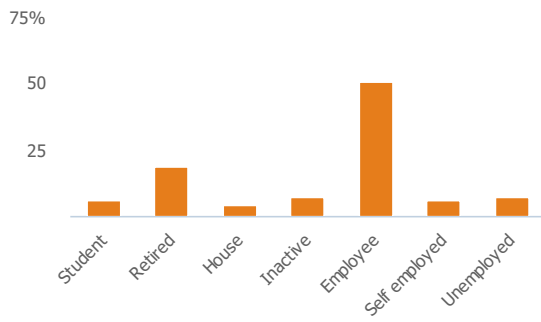
-17%

Less than similar towns per head of population

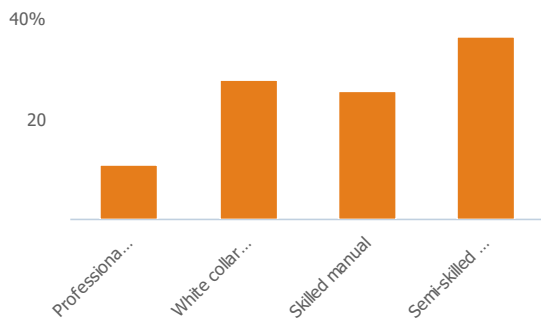
### Employment type(% working full time vs part time aged 16-74)



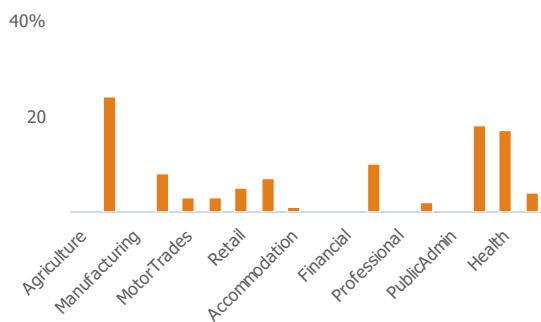
### Occupation (%aged 16-74)



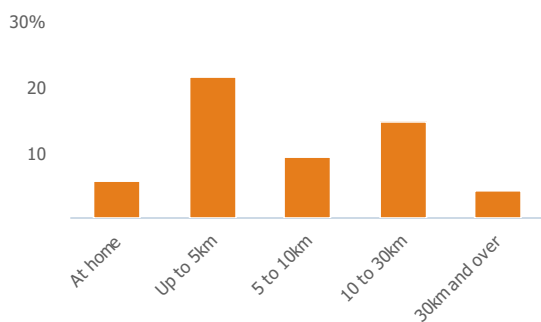
### Social Grade (% households aged 16-64)



### Sector Diversity

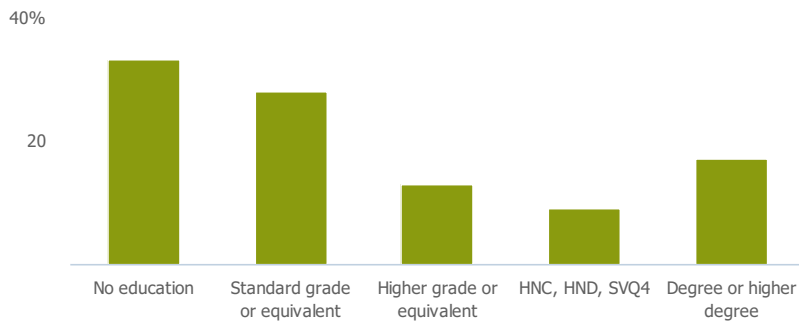


### Distance travelled to work



## Public

### Education (% all people aged 16 and over)



## Children in primary schools

245

Less than similar towns per head of population

## Commuter Flow Map

Coloured and grey lines/pins show the main and smaller commuter flows, respectively, between this town and the other towns in Scotland.

## Commercial

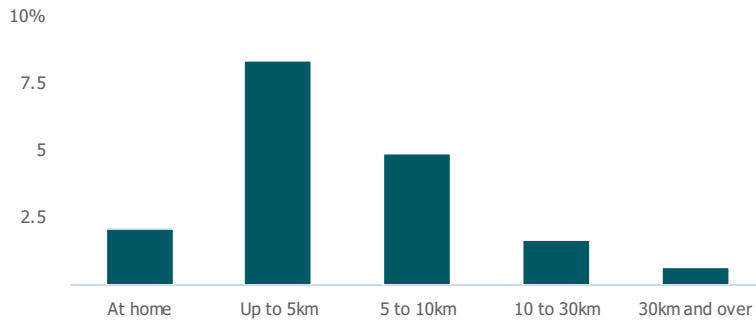
### Number of people per shop

246

Less than similar towns per head of population

## Social

### Distance travelled to study



### Number of residents per charity

265

Less than similar towns per head of population

## Connectivity and environment assets

### Average download speed (MBs)

23

Less than similar towns per head of population

## Download

Download all of the Clackmannan data in PDF format.

[Download PDF \(https://uspreview.blob.core.windows.net/pdfs/Clackmannan.pdf\)](https://uspreview.blob.core.windows.net/pdfs/Clackmannan.pdf)

