

Castle Douglas, Dumfries and Galloway

Population 4,174

Castle Douglas in Dumfries and Galloway is an historic town, recently re-invented as a 'Food Town'. It is a market town with a livestock market, slaughter house, dairy equipment manufacturing and home of the Galloway Cattle Society, all emphasising its connection with the agricultural hinterland.

This type of medium-sized town is extremely mixed in terms of demographics. There is a particularly wide range of people, housing and activities. The number of older couples with no children are higher than average. There is a mix of professional and non-professional jobs, and part-time and self-employment are both important for a significant proportion of residents. Socioeconomic status is higher than in other kinds of town and there is a mix of professionals and nonprofessionals, those with higher and lower educational attainment.

Castle Douglas is an independent town.

Its most similar towns are [Turiff](#), [Kirkwall](#), [Kelso](#), and [Lockerbie](#).

To gain more insight into Castle Douglas, compare it to any of the other towns included in USP.

Inter-relationships

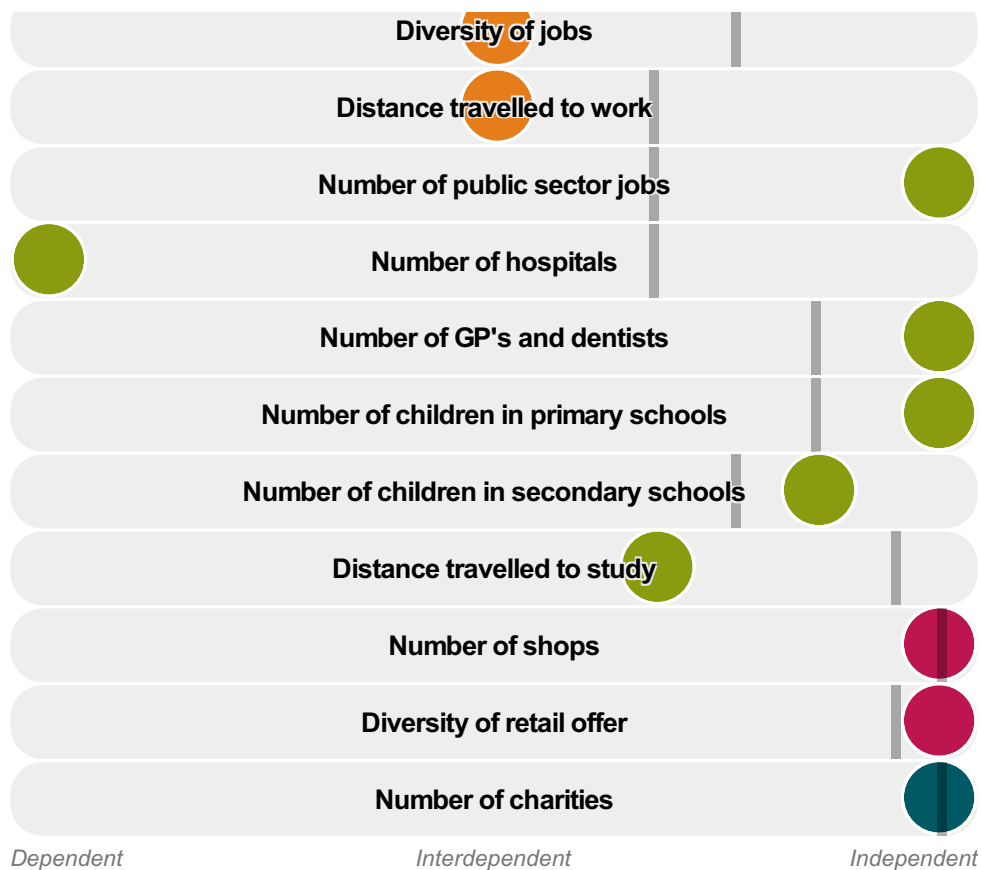
Dependent

Interdependent

Independent

Number of jobs





Castle Douglas is an **independent** town.

Combining inter-relationships and typology, Castle Douglas is grouped with 11 other towns. It has similarities to these towns in terms of the number of charities, children in secondary schools, jobs, shops, and diversity of retail offer.

It differs in terms of the number of public sector jobs. It also differs in the diversity of jobs, and the distance travelled to study. Castle Douglas differs most from its group in the number of hospitals.

- Employment
- Public
- Commercial
- Social
- Average for the category

Change

Population change 2001 to 2011

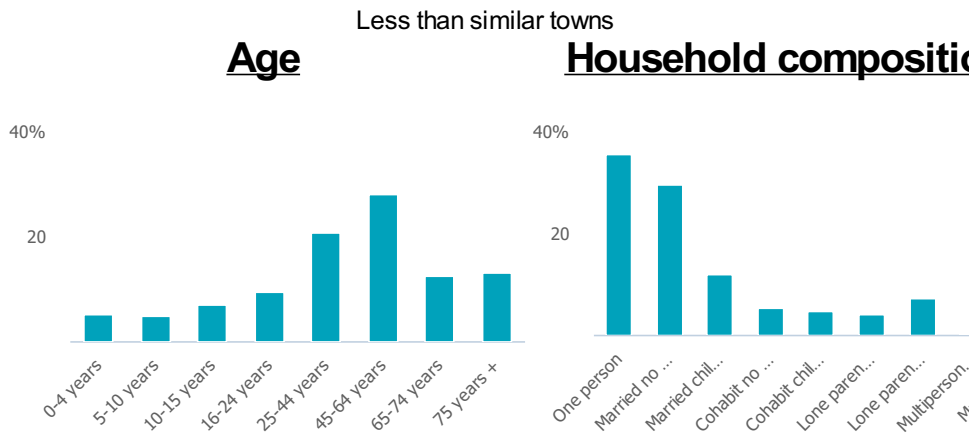
14%

More than similar towns per head of population

Population

Population 2011

4k



Employment

Jobs

2k

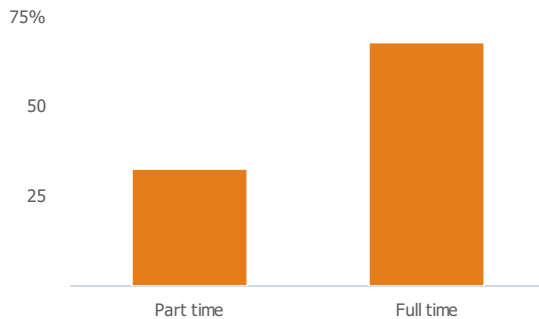
Less than similar towns per head of population

Jobs change 2009 to 2014

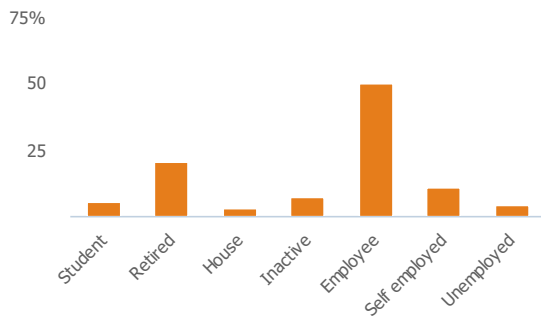
-9%

Less than similar towns per head of population

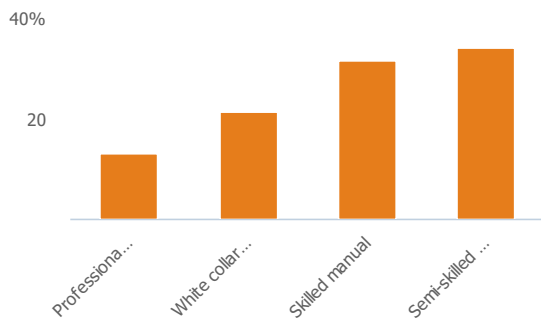
Employment type(% working full time vs part time aged 16-74)



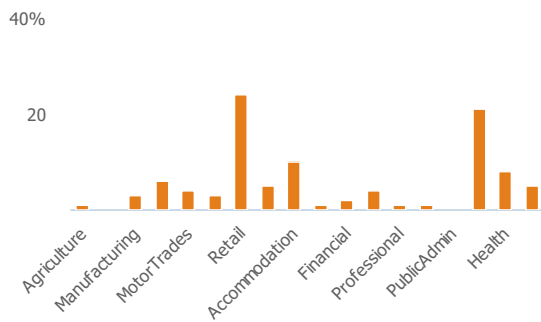
Occupation (% aged 16-74)



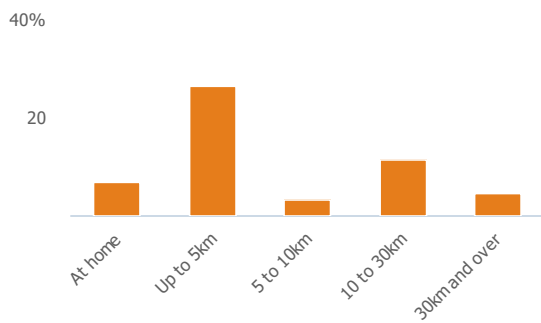
Social Grade (% households aged 16-64)



Sector Diversity

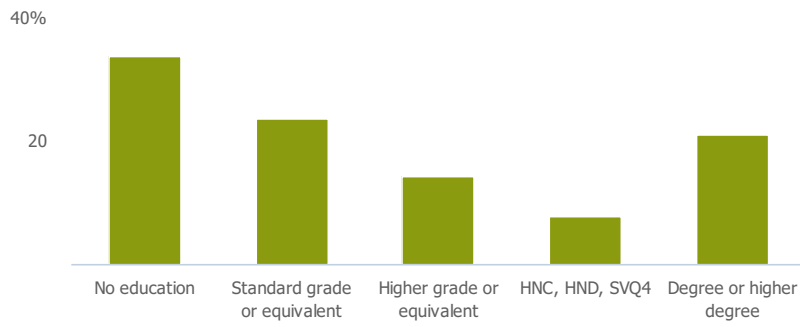


Distance travelled to work



Public

Education (% all people aged 16 and over)



Children in primary schools

780

More than similar towns per head of population

Commuter Flow Map

Coloured and grey lines/pins show the main and smaller commuter flows, respectively, between this town and the other towns in Scotland.

Commercial

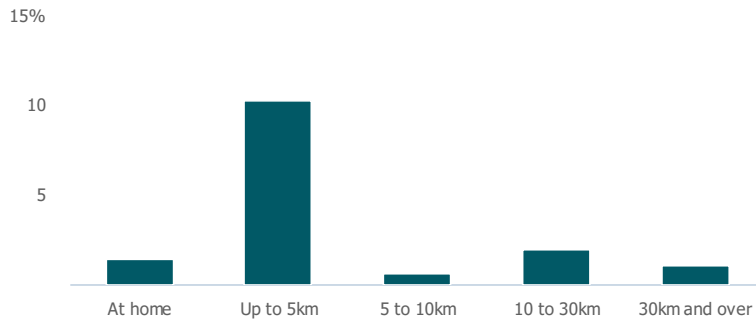
Number of people per shop

26

More than similar towns per head of population

Social

Distance travelled to study



Number of residents per charity

53

Less than similar towns per head of population

Connectivity and environment assets

Average download speed (MBs)

24

More than similar towns per head of population

Download

Download all of the Castle Douglas data in PDF format.

[Download PDF \(https://usppreview.blob.core.windows.net/pdfs/Castle%20Douglas.pdf\)](https://usppreview.blob.core.windows.net/pdfs/Castle%20Douglas.pdf)

