

Bargeddie, North Lanarkshire

Population 2,790

Bargeddie is in North Lanarkshire. It was a mining village but was extended in the post war period to accommodate overspill from Glasgow.

This type of small town is extremely mixed in terms of demographics. There are particularly wide ranges of people, housing and activities. The number of older couples with no children is higher than average. There is a mix of professional and non-professional jobs, and part-time and self-employment are both important for a significant proportion of residents. Socioeconomic status is higher than in other types of town and there is a mix of professionals and nonprofessionals, those with higher and lower educational attainment.

Bargeddie is a dependent to interdependent town.

Its most similar towns are [Winchburgh](#), [Seafield](#), [Rosewell](#), and [Ardersier](#).

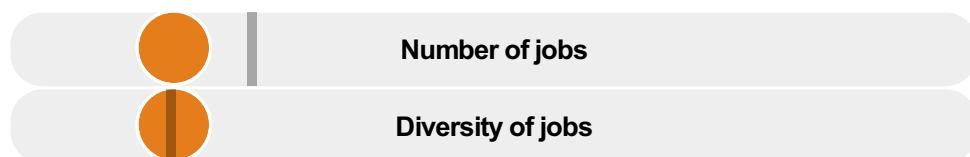
To gain more insight into Bargeddie, compare it to any of the other towns included in USP.

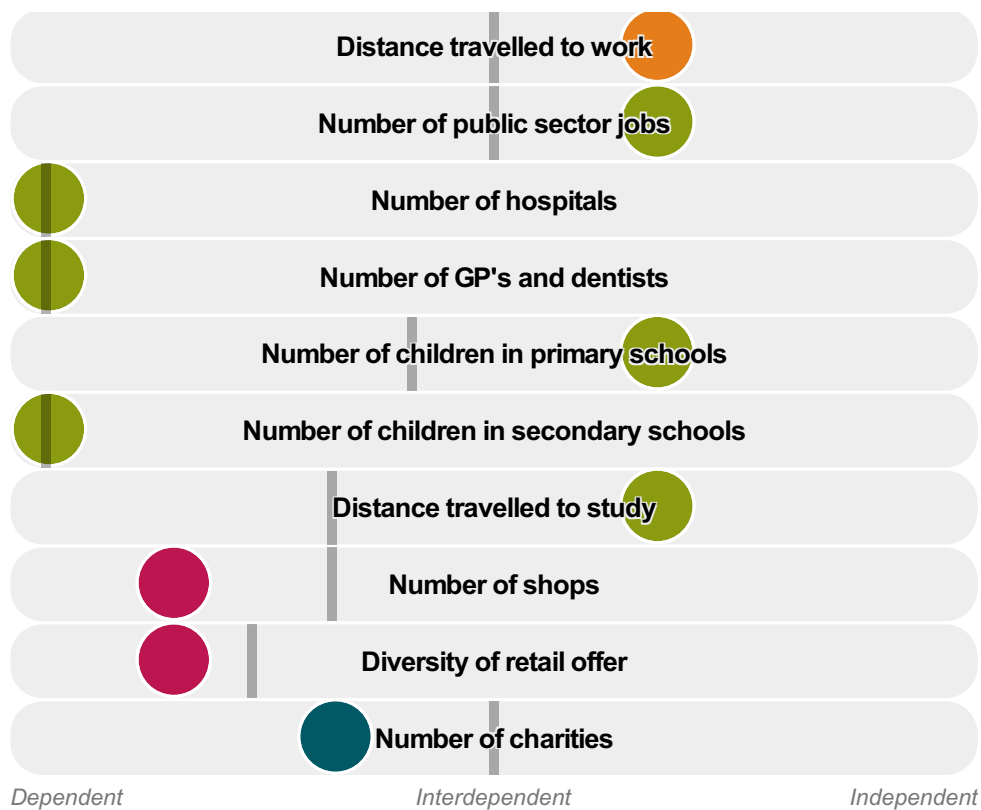
Inter-relationships

Dependent

Interdependent

Independent





Dependent

Interdependent

Independent

Bargeddie is a **dependent to interdependent** town.

Combining inter-relationships and typology, Bargeddie is grouped with 19 other towns. It has similarities to these towns in terms of the number of charities, hospitals, children in secondary schools, jobs, GP's and dentists, and diversity of retail offer. It also has similarities in the diversity of jobs.

Bargeddie differs most from its group in the number of children in primary schools; and the distance travelled to study.

- Employment
- Public
- Commercial
- Social
- Average for the category

Change

Population change 2001 to 2011

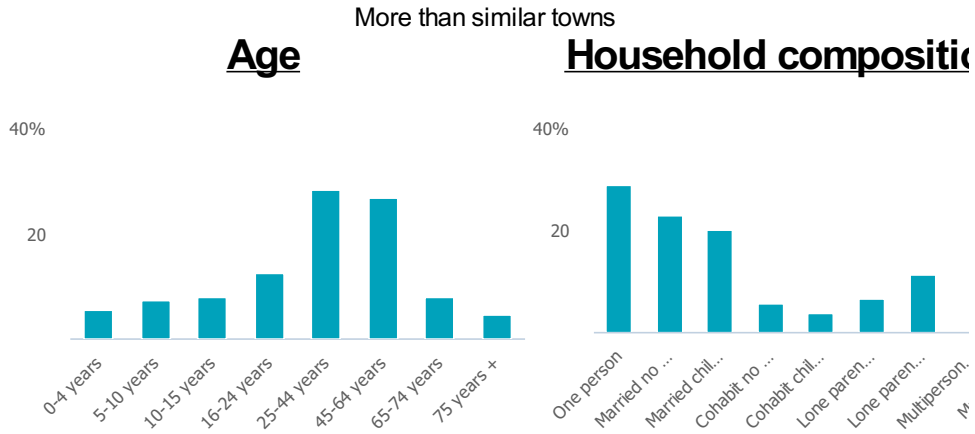
30%

More than similar towns per head of population

Population

Population 2011

3k



Employment

Jobs

331

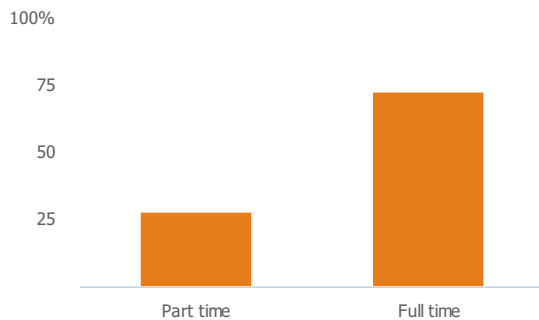
Less than similar towns per head of population

Jobs change 2009 to 2014

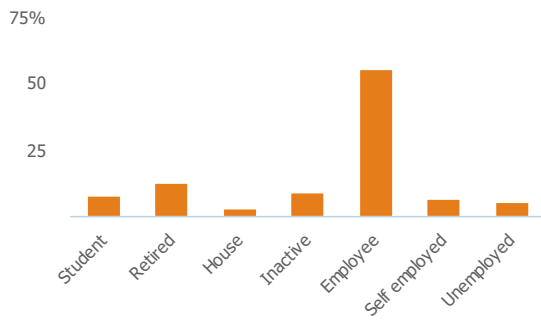
-223%

Less than similar towns per head of population

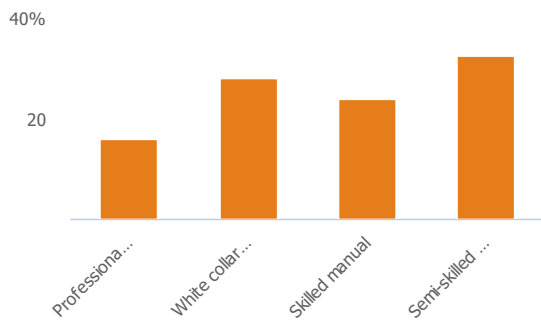
Employment type(% working full time vs part time aged 16-74)



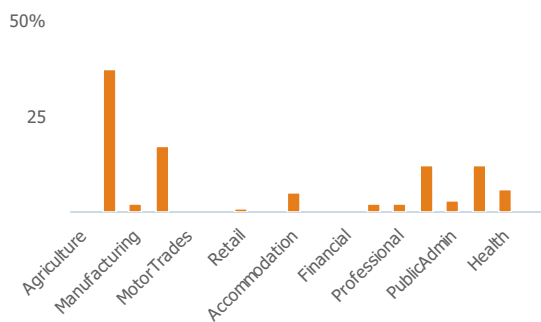
Occupation (%aged 16-74)



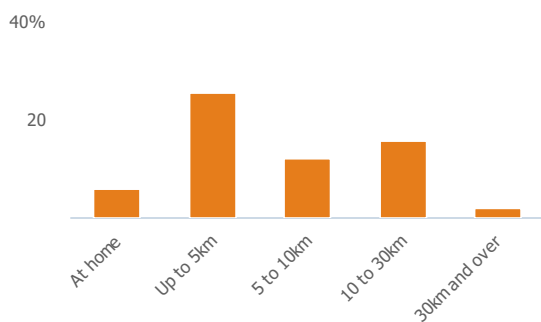
Social Grade (% households aged 16-64)



Sector Diversity

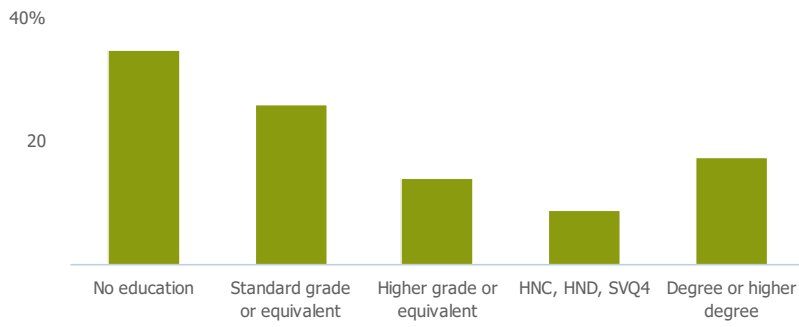


Distance travelled to work



Public

Education (% all people aged 16 and over)



Children in primary schools

257

More than similar towns per head of population

Commuter Flow Map

Coloured and grey lines/pins show the main and smaller commuter flows, respectively, between this town and the other towns in Scotland.

Commercial

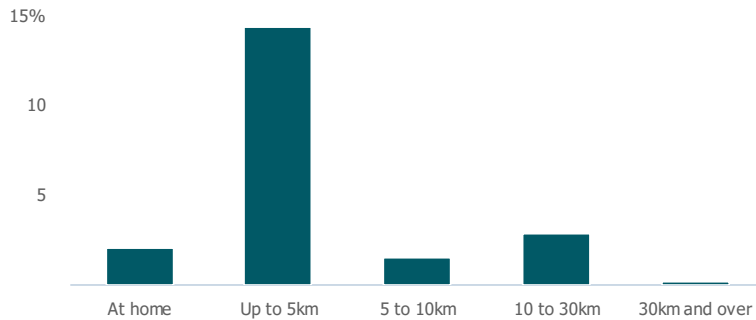
Number of people per shop

698

Less than similar towns per head of population

Social

Distance travelled to study



Number of residents per charity

558

Less than similar towns per head of population

Connectivity and environment assets

Average download speed (MBs)

71

More than similar towns per head of population

Download

Download all of the Bargeddie data in PDF format.

[Download PDF \(https://usppreview.blob.core.windows.net/pdfs/Bargeddie.pdf\)](https://usppreview.blob.core.windows.net/pdfs/Bargeddie.pdf)



UNIVERSITY of STIRLING

