

Banavie and Corpach, Highland

Population 1,378

Banavie and Corpach in Highland are located at the western end of the Caledonian Canal. Corpach was the site of a major pulp mill development. Although the pulp and paper mill are now closed the site is now used for timber operations.

This type of small town is extremely mixed in terms of demographics. There are particularly wide ranges of people, housing and activities. The number of older couples with no children is higher than average. There is a mix of professional and non-professional jobs, and part-time and self-employment are both important for a significant proportion of residents. Socioeconomic status is higher than in other types of town and there is a mix of professionals and nonprofessionals, those with higher and lower educational attainment.

Banavie and Corpach is an interdependent to dependent town.

Its most similar towns are [Laurieston](#), [Conon Bridge and Maryburgh](#), [Ladybank](#), and [Ardrishaig](#).

To gain more insight into Banavie and Corpach, compare it to any of the other towns included in USP.

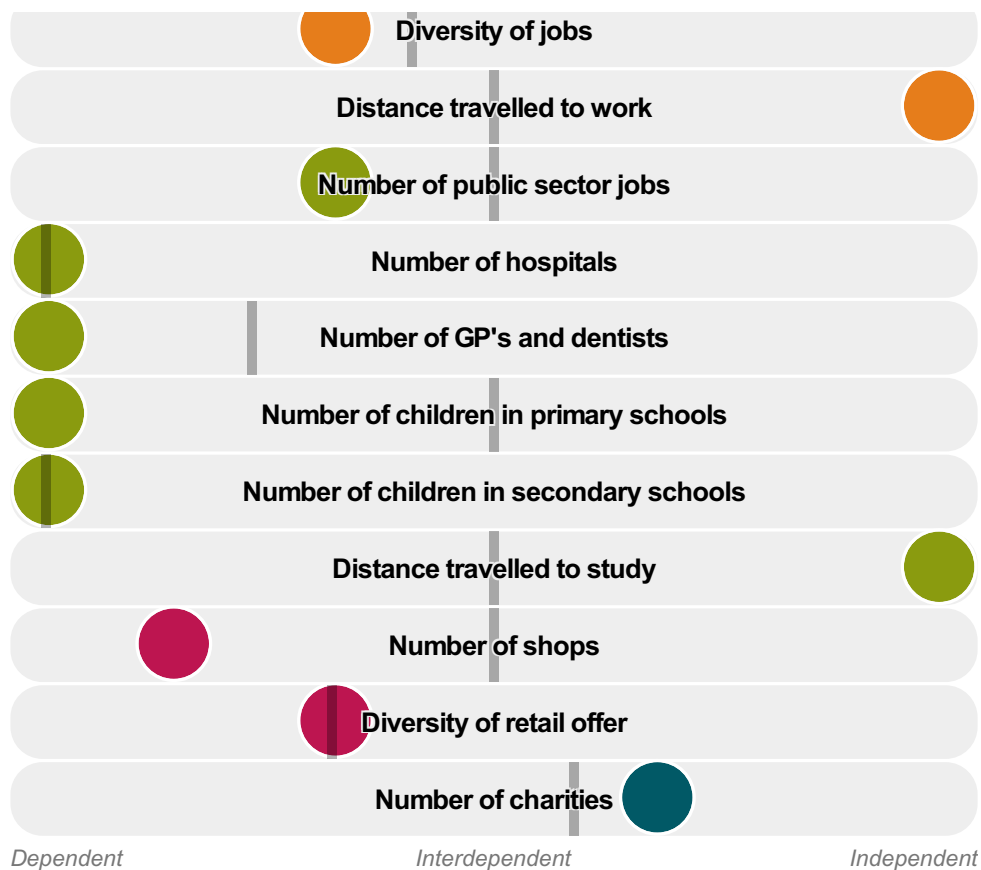
Inter-relationships

Dependent

Interdependent

Independent





Banavie and Corpach is an **interdependent to dependent** town.

Combining inter-relationships and typology, Banavie and Corpach is grouped with 42 other towns. It has similarities to these towns in terms of the number of charities, hospitals, children in secondary schools, and diversity of retail offer. It also has similarities in the diversity of jobs.

It differs in terms of the number of jobs, and shops. It also differs in the distance travelled to work, and the distance travelled to study. Banavie and Corpach differs most from its group in the number of children in primary schools, and GP's and dentists.

- Employment
- Public
- Commercial
- Social
- ▬ Average for the category

Change

Population change 2001 to 2011

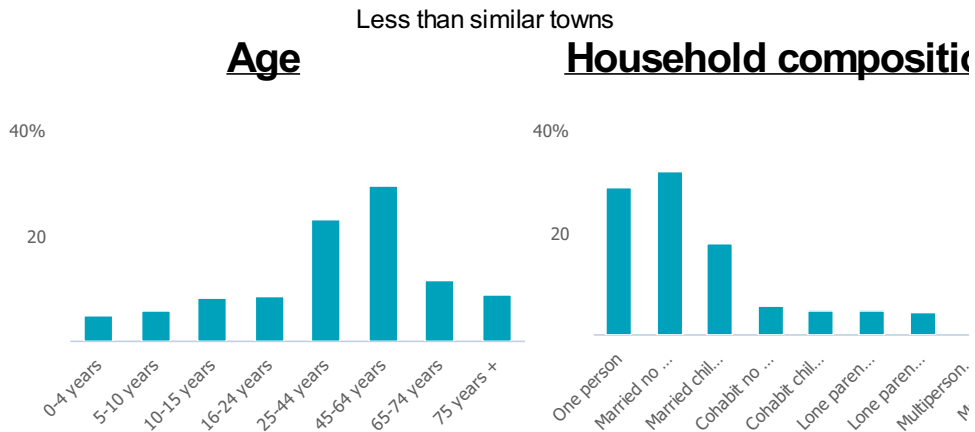
7%

More than similar towns per head of population

Population

Population 2011

1k



Employment

Jobs

568

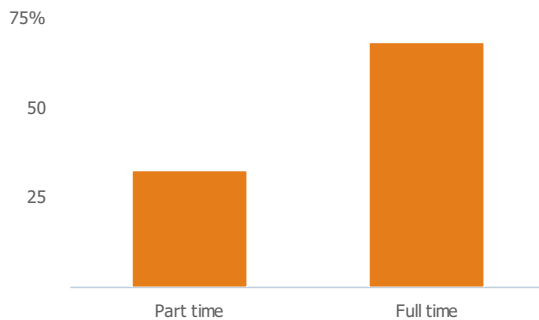
Less than similar towns per head of population

Jobs change 2009 to 2014

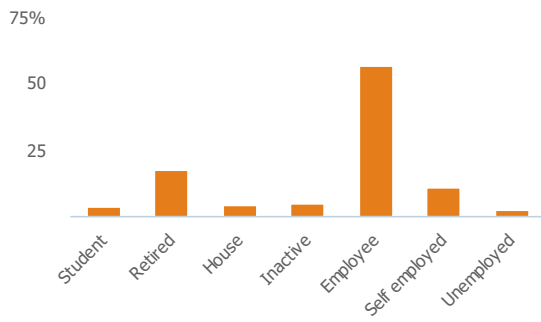
25%

More than similar towns per head of population

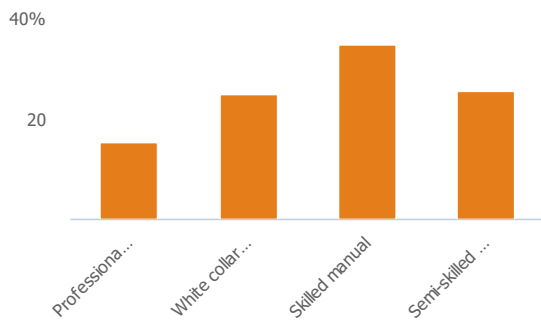
Employment type(% working full time vs part time aged 16-74)



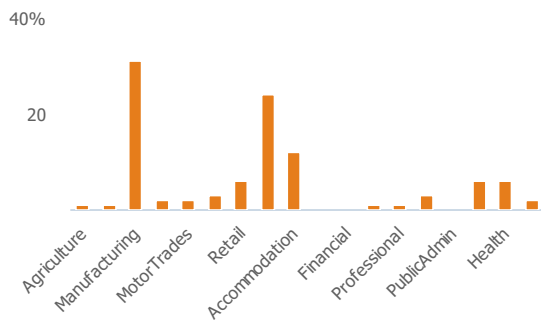
Occupation (% aged 16-74)



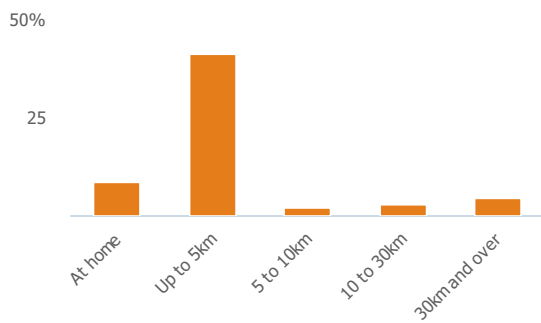
Social Grade (% households aged 16-64)



Sector Diversity

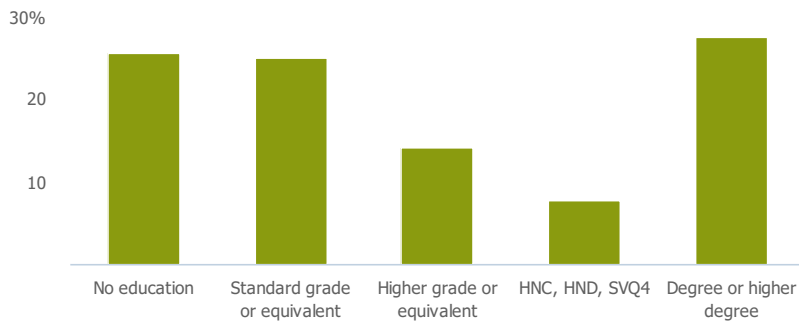


Distance travelled to work



Public

Education (% all people aged 16 and over)



Children in primary schools

0

Less than similar towns per head of population

Commuter Flow Map

Coloured and grey lines/pins show the main and smaller commuter flows, respectively, between this town and the other towns in Scotland.

Commercial

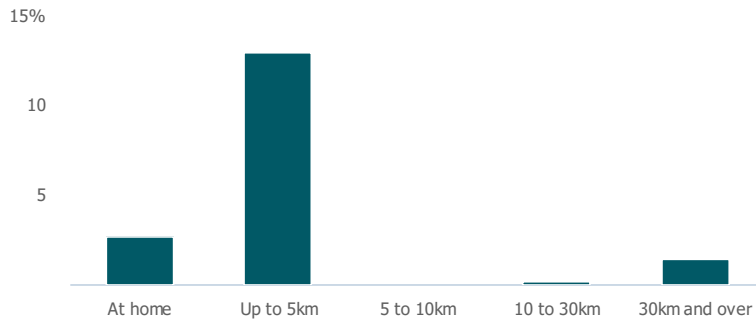
Number of people per shop

1k

Less than similar towns per head of population

Social

Distance travelled to study



Number of residents per charity

230

Less than similar towns per head of population

Connectivity and environment assets

Average download speed (MBs)

21

More than similar towns per head of population

Download

Download all of the Banavie and Corpach data in PDF format.

[Download PDF \(https://usppreview.blob.core.windows.net/pdfs/Banavie%20and%20Corpach.pdf\)](https://usppreview.blob.core.windows.net/pdfs/Banavie%20and%20Corpach.pdf)



UNIVERSITY of STIRLING

