

Aberdeen, Aberdeen City

Population 195,021

Aberdeen in Aberdeen City local authority is Scotland's 3rd largest city. The granite city is so-called because of the distinctive stone buildings. It is also known as Scotland's oil capital. Since the oil boom the former trading and fishing harbour has been transformed to service the oil industry in the North Sea.

Cities like Aberdeen have a particularly wide range of people, housing and activities. There is a mix of professional and non-professional jobs, and part-time and self-employment are both important for a significant proportion of residents. The number of older couples with no children is higher than average in this group. Socioeconomic status is higher than in other kinds of cities and there is a mix of professionals and non-professionals, those with higher and lower educational attainment.

Aberdeen is an independent to interdependent town.

Its most similar towns are [Edinburgh](#), and [Livingston](#).

To gain more insight into Aberdeen, compare it to any of the other towns included in USP.

Inter-relationships

Dependent

Interdependent

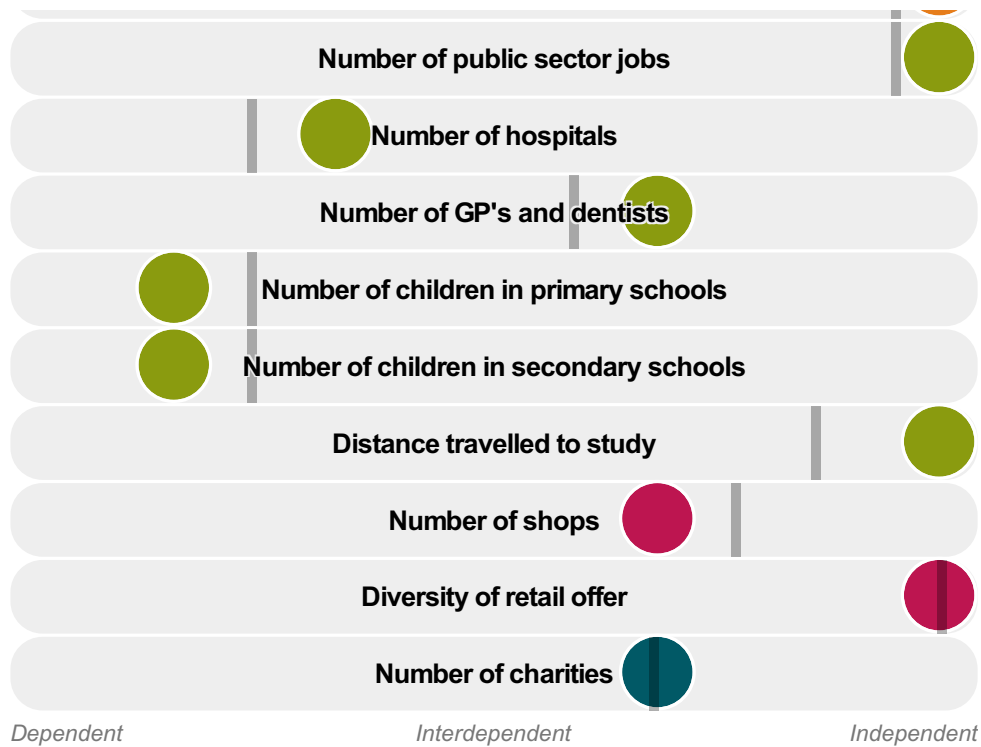
Independent

Number of jobs

Diversity of jobs

Distance travelled to work





Aberdeen is an **independent to interdependent** town.

Combining inter-relationships and typology, Aberdeen is grouped with 2 other towns. It has similarities to these towns in terms of the number of charities, hospitals, children in primary schools, children in secondary schools, jobs, public sector jobs, shops, GP's and dentists, and diversity of retail offer. It also has similarities in the diversity of jobs, the distance travelled to work, and the distance travelled to study.

- Employment
- Public
- Commercial
- Social
- Average for the category

Change

Population change 2001 to 2011

6%

Less than similar towns per head of population

Population

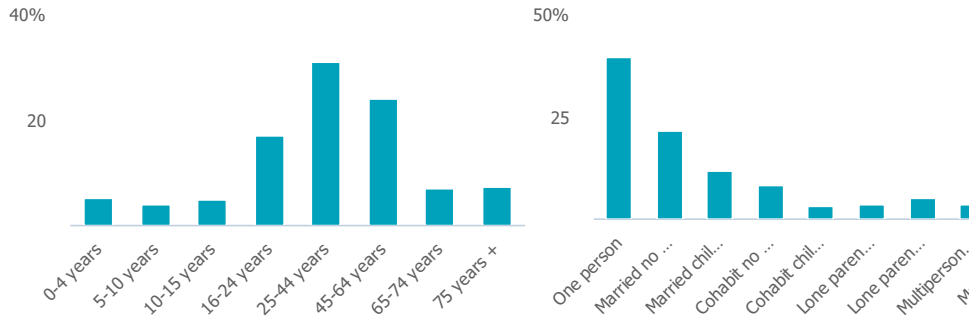
Population 2011

195k

Less than similar towns

Age

Household composition



Employment

Jobs

151k

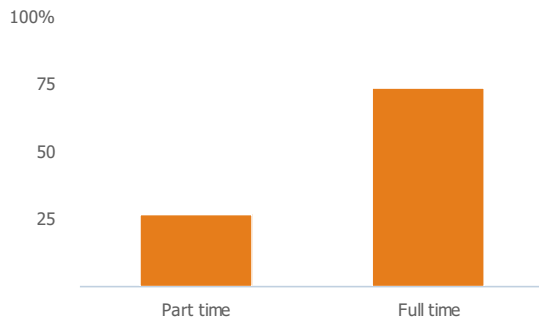
More than similar towns per head of population

Jobs change 2009 to 2014

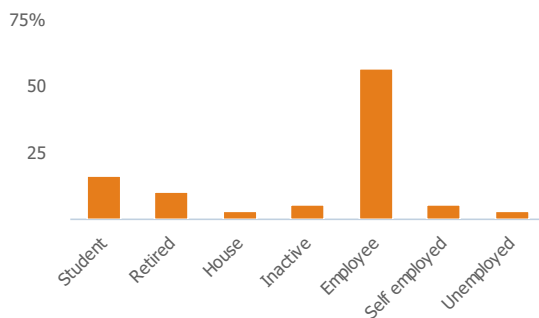
7%

More than similar towns per head of population

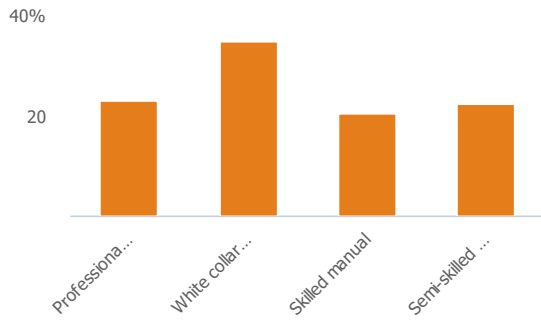
Employment type(% working full time vs part time aged 16-74)



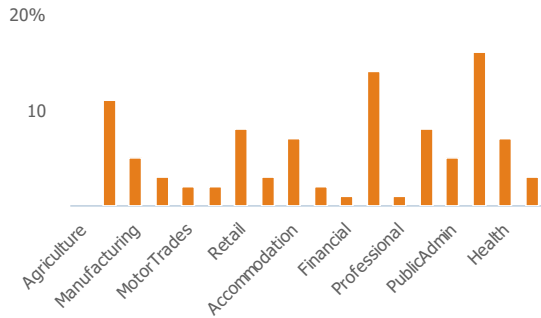
Occupation (% aged 16-74)



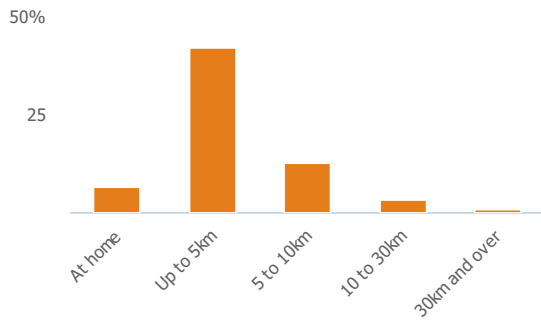
Social Grade (% households aged 16-64)



Sector Diversity

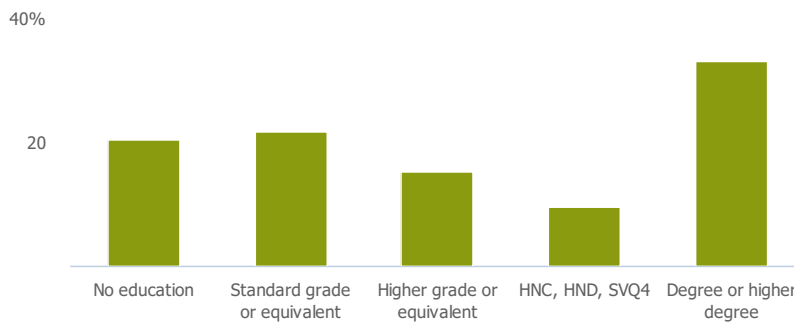


Distance travelled to work



Public

Education (% all people aged 16 and over)



Children in primary schools

13k

Less than similar towns per head of population

Commuter Flow Map

Coloured and grey lines/pins show the main and smaller commuter flows, respectively, between this town and the other towns in Scotland.

Commercial

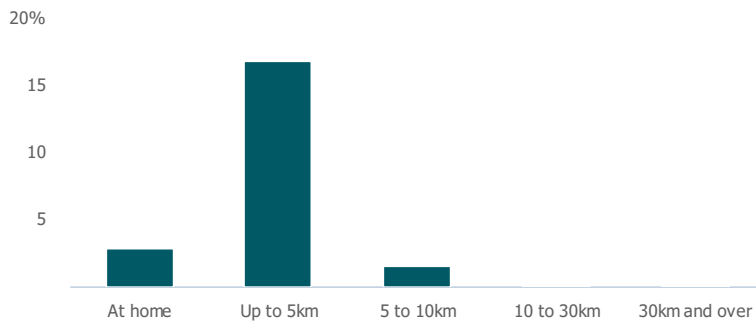
Number of people per shop

91

More than similar towns per head of population

Social

Distance travelled to study



Number of residents per charity

242

Less than similar towns per head of population

Connectivity and environment assets

Average download speed (MBs)

23

Less than similar towns per head of population

Download

Download all of the Aberdeen data in PDF format.

[Download PDF \(https://usppreview.blob.core.windows.net/pdfs/Aberdeen.pdf\)](https://usppreview.blob.core.windows.net/pdfs/Aberdeen.pdf)

